

2016

SOUTH AFRICAN ENERGY PRICES STATISTICS



DIRECTORATE:
ENERGY DATA COLLECTION,
MANAGEMENT AND ANALYSIS



energy

Department:

Energy

REPUBLIC OF SOUTH AFRICA



ABOUT THIS PUBLICATION

In order for sound decision making and proper situational analysis to be made in any economic environment, there is a need for data that is detailed, complete, reliable and timely to be made available and accessible. The 2016 South African Energy Prices Statistics is a statistical handbook that is intended to inform, educate and assist energy sector stakeholders and the public with regards to major energy commodity prices trends, patterns and movements by presenting data in a format that is easily readable and understandable. Interest in the energy sector is becoming increasingly widespread with the public requesting information on energy related issues. As a result, the Energy Data Collection, Management and Analysis Directorate within the Department of Energy have decided to introduce this publication which will be compiled and published annually.

This booklet contains quality and relevant energy prices data of the major energy carriers and is intended to be the point of reference for energy professionals, media, government, private individuals and most importantly the general public.

The booklet also contains tables, graphs and figures for monthly and annual energy prices. The energy prices covered in this booklet are for Crude Oil, Petroleum Products, Coal, Electricity, Liquefied Petroleum Gas, Natural Gas and Illuminating Paraffin. This booklet complements the detailed South African Energy Price Report which is published annually.

The prices contained in this booklet covers a period of 10 years ranging from 2006 to 2015. Both figures and tables are presented to highlight the behavioural patterns, trends and to record data in a sequential order.

This publication will be made available on the Department's website and printed copies will be made available on request.



2016 SOUTH AFRICAN ENERGY PRICES STATISTICS

Directorate: Energy Data Collection, Management and Analysis

Compiled by:

Mr Modisane Motiang

modisane.motiang@energy.gov.za

Mr Ramaano Nembahe

ramaano.nembahe@energy.gov.za

Published by:

Department of Energy

Private Bag X96
Pretoria
0001
Tel: (012) 406-7540

192 Visagie Street, c/o Paul Kruger & Visagie Street, Pretoria, 0001
Website: <http://www.energy.gov.za>

THIS, THE FIRST EDITION, PUBLISHED IN DECEMBER 2016.

WHEREAS THE GREATEST CARE HAS BEEN TAKEN IN THE COMPILATION OF THIS PUBLICATION, THE DEPARTMENT OF ENERGY RELIES ON DATA PROVIDED BY VARIOUS SOURCES AND DOES NOT HOLD ITSELF RESPONSIBLE FOR ANY ERRORS OR OMISSIONS EMANATING AS A CONSEQUENCE OF PROVISION OF INACCURATE, INCORRECT OR INCOMPLETE DATA FROM SUCH SOURCES.

COPYRIGHT RESERVED



Table of Contents

1	CRUDE OIL PRICES	5
2	PETROL PRICES	8
3	DIESEL PRICES	25
4	ILLUMINATING PARAFFIN PRICES	39
5	ELECTRICITY PRICES	40
6	LIQUEFIED PETROLEUM GAS PRICES	43
7	COAL PRICES	55
8	FOREIGN EXCHANGE.....	56
	APPENDIX.....	58

Table of Tables

Table 1-1	Average Monthly Crude Oil Prices in US\$/bbl (2006-2015).....	5
Table 1-2	Annual Crude Oil Prices (2006-2015).....	6
Table 2-1	Monthly Petrol Retail Prices in cents per litre (2006-2015).....	8
Table 2-2	Individual Components Contribution in Petrol ULP 93 Prices in cents (2006-2015).....	13
Table 2-3	Average Annual Contributions of Individual Components Petrol ULP 93 in cents (2006-2015).....	17
Table 2-4	Individual Components Contribution in Petrol ULP 95 Prices in cents (2006-2015).....	19
Table 2-5	Average Annual Contributions of Individual Components Petrol ULP 95 in cents (2006-2015).....	24
Table 3-1	Monthly Diesel Wholesale Prices in cents per litre (2006-2015).....	25
Table 3-2	Monthly Wholesale 0.05% Diesel Prices Individual Components in cents.....	29
Table 3-3	Monthly Wholesale 0.005% Diesel Prices Individual Components in cents per litre.....	33
Table 3-4	Annual Contribution of Individual Components Diesel 0.005% in cents per litre (2006-2015).....	37
Table 3-5	Annual Contributions of Individual Components Diesel 0.05% in cents (2006-2015).....	38
Table 4-1	Monthly Illuminating Paraffin Prices in cents per litre (2006-2015)	39
Table 5-1	Annual Average Eskom Prices by Customer Category in cents per kilowatt per hour(2006-2015).....	40
Table 5-2	Annual Eskom's Average Tariff Adjustment (2005 -2016).....	41
Table 6-1	Monthly Regulated Maximum Refinery Gate and Maximum Retail Prices for Liquefied Petroleum Gas (2006-2015).....	43
Table 7-1:	Average Sasol Monthly Natural Gas Prices- Rand per Gigajoule(R/GJ).....	47
Table 7-2:	Maximum Monthly Sasol Natural Gas Prices in Rand per Gigajoule (R/GJ).....	51
Table 7-3:	Monthly Sasol Natural Gas Tariffs (Rand per GigaJoule).....	53
Table 7-4:	Monthly Sasol Weighted Average Prices (Rand per GigaJoule).....	54
Table 8-1	Annual Average Local and Export Coal Prices in Rand per ton	55
Table 9-1	Average Monthly Foreign Exchange Rates (RSA Rand vs US Dollar).....	56



Table of Figures

Figure 1-1 Average Monthly Crude Oil Prices In US\$/Bbl (2006-2015).....	6
Figure 1-2 Annual Crude Oil Prices (2006-2015).....	7
Figure 2-1 Petrol (ULP 95 & 93) Prices, Crude Oil Prices And Rand/Dollar Exchange Rate (2006-2015).....	12
Figure 2-2 Average Annual Contributions of Individual Components Petrol ULP 93 in cents (2006 - 2015)..	18
Figure 2-3 Average Annual Contributions of Individual Components Petrol ULP 95 in cents (2006-2015).....	23
Figure 3-1 Diesel (0.05% & 0.005) Inland Prices, Crude Oil Prices And Rand/Dollar Exchange Rate (2006-2015).....	28
Figure 3-2 Annual Contribution Of Individual Components Diesel 0.005 In Cents Per Litre (2006-2015).....	37
Figure 3-3 Annual Contribution Of Individual Components Diesel 0.05% In Cents Per Litre (2006-2015).....	38
Figure 4-1 Monthly Illuminating Paraffin Prices, Crude Oil Prices And Rand/Dollar Exchange Rate (2006-2015).....	40
Figure 5-1 Annual Average Eskom Prices By Customer Category In Cents Per Kilowatt Per Hour (2006-2015).....	41
Figure 5-2 Annual Eskom's Average Tariff Adjustment (2006 -2016).....	42
Figure 6-1 Monthly Regulated Maximum Refinery Gate (MRGP) In Cents Per Litre And ULP 93 Basic Fuel Price (BFP) In Cents (2006-2015).....	46
Figure 7-1: Maximum Monthly Sasol Natural Gas Prices In Rand Per Gigajoule (R/GJ).....	52
Figure 8-1 Annual Average Local And Export Coal Prices In Rand Per Ton.....	55
Figure 9-1 Average Monthly Foreign Exchange Rates.....	57



1 Crude Oil Prices

Table 1-1 Average Monthly Crude Oil Prices in US\$/bbl(2006-2015)

Period	Brent	Dubai
Jan-06	63.00	58.40
Feb-06	60.10	57.60
Mar-06	62.10	57.80
Apr-06	70.30	64.10
May-06	69.90	65.00
Jun-06	68.70	65.20
Jul-06	73.70	69.20
Aug-06	73.10	68.80
Sep-06	61.70	59.80
Oct-06	57.80	56.40
Nov-06	58.90	56.70
Dec-06	62.30	58.70
Jan-07	53.68	51.70
Feb-07	57.43	55.80
Mar-07	62.15	58.80
Apr-07	67.51	64.00
May-07	67.23	64.60
Jun-07	71.41	65.74
Jul-07	77.01	69.49
Aug-07	70.73	67.38
Sep-07	76.87	73.36
Oct-07	82.50	77.12
Nov-07	92.61	86.87
Dec-07	90.97	85.58
Jan-08	92.00	87.37
Feb-08	95.04	90.02
Mar-08	103.66	96.76
Apr-08	108.97	103.41
May-08	122.73	119.50
Jun-08	132.44	127.82
Jul-08	133.18	131.27
Aug-08	113.03	112.86
Sep-08	98.13	95.90
Oct-08	71.87	67.42
Nov-08	52.51	49.84
Dec-08	40.35	40.53
Jan-09	43.27	43.59
Feb-09	43.07	43.09
Mar-09	46.54	45.59
Apr-09	50.53	50.19
May-09	57.27	57.48

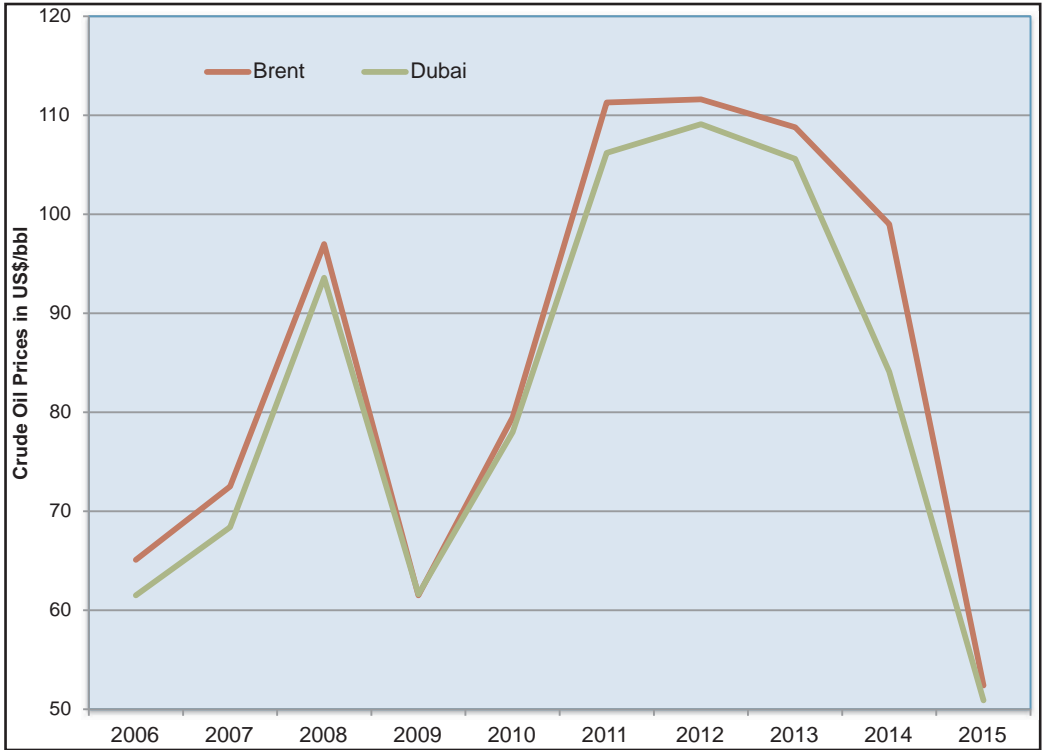
Period	Brent	Dubai
Jun-09	68.55	69.41
Jul-09	64.61	64.82
Aug-09	72.84	71.36
Sep-09	67.39	67.74
Oct-09	72.75	73.15
Nov-09	76.66	77.70
Dec-09	74.28	75.41
Jan-10	76.19	76.69
Feb-10	73.63	73.48
Mar-10	78.89	77.31
Apr-10	84.89	83.59
May-10	75.16	76.78
Jun-10	74.85	73.99
Jul-10	75.64	72.49
Aug-10	77.15	74.09
Sep-10	77.79	75.12
Oct-10	82.74	80.22
Nov-10	85.33	83.65
Dec-10	91.36	89.05
Jan-11	96.55	92.53
Feb-11	103.77	100.25
Mar-11	114.61	108.72
Apr-11	123.49	116.02
May-11	114.56	108.39
Jun-11	114.05	107.78
Jul-11	116.89	110.00
Aug-11	110.38	105.03
Sep-11	113.13	106.32
Oct-11	109.44	103.96
Nov-11	110.67	109.01
Dec-11	107.84	106.44
Jan-12	110.39	109.66
Feb-12	119.55	116.16
Mar-12	125.33	122.47
Apr-12	119.86	117.47
May-12	110.27	107.71
Jun-12	95.19	94.44
Jul-12	102.59	99.15
Aug-12	113.48	108.62
Sep-12	112.86	111.22
Oct-12	111.60	108.80

Period	Brent	Dubai
Nov-12	109.11	107.22
Dec-12	109.23	106.32
Jan-13	113.00	111.00
Feb-13	116.00	111.00
Mar-13	108.00	106.00
Apr-13	103.30	101.68
May-13	103.40	100.30
Jun-13	103.60	100.32
Jul-13	107.60	103.50
Aug-13	110.80	106.80
Sep-13	111.89	108.28
Oct-13	109.04	106.70
Nov-13	108.00	108.00
Dec-13	110.87	108.00
Jan-14	108.34	104.18
Feb-14	108.87	105.04
Mar-14	107.54	104.32
Apr-14	107.75	104.74
May-14	109.70	105.60
Jun-14	111.70	108.00
Jul-14	106.60	106.13
Aug-14	101.56	106.33
Sep-14	97.30	96.50
Oct-14	87.40	86.73
Nov-14	78.89	76.33
Dec-14	62.18	59.99
Jan-15	48.18	45.91
Feb-15	58.13	55.85
Mar-15	55.92	54.66
Apr-15	59.26	58.38
May-15	64.32	63.54
Jun-15	61.69	61.76
Jul-15	56.54	56.15
Aug-15	46.72	47.87
Sep-15	47.61	45.38
Oct-15	48.56	45.84
Nov-15	44.29	41.79
Dec-15	38.11	34.52

Source: SAPIA



Figure 1-2 Annual Crude Oil Prices in US\$/ bbl (2006 -201 5)



Source: SAPIA



2 Petrol Prices

Table2-1 Monthly Petrol Retail Prices in cents per litre (2006-2015)

Period	Petrol ULP 93		Petrol ULP 95	
	Coast	Gauteng	Coast	Gauteng
04-Jan-06	550	536	526	549
01-Feb-06	539	550	540	563
01-Mar-06	539	539	529	552
05-Apr-06	610	559	549	573
03-May-06	646	598	588	612
07-Jun-06	671	634	624	648
05-Jul-06	702	659	649	673
02-Aug-06	702	690	680	704
06-Sep-06	613	654	644	668
04-Oct-06	592	604	594	618
01-Nov-06	592	583	573	597
06-Dec-06	585	576	566	590
03-Jan-07	584	584	574	598
07-Feb-07	561	561	551	575
07-Mar-07	585	585	575	599
04-Apr-07	654	677	643	643
02-May-07	688	687	677	701
06-Jun-07	711	710	700	724
04-Jul-07	703	702	692	716
01-Aug-07	688	687	677	701
05-Sep-07	678	677	667	691
03-Oct-07	687	687	677	701
07-Nov-07	690	690	680	704
05-Dec-07	733	733	723	747
02-Jan-08	733	733	723	747
06-Feb-08	750	750	740	764
05-Mar-08	811	811	801	825
02-Apr-08	878	877	867	891
07-May-08	933	932	922	946
04-Jun-08	983	982	972	996
02-Jul-08	1060	1050	1040	1070
06-Aug-08	1020	1030	1010	1040
03-Sep-08	931	952	942	966
01-Oct-08	941	927	917	941
05-Nov-08	879	882	872	896



Period	Petrol ULP 93		Petrol ULP 95	
	Coast	Gauteng	Coast	Gauteng
03-Dec-08	718	721	711	735
07-Jan-09	582	582	576	601
04-Feb-09	643	643	637	662
04-Mar-09	688	688	682	707
01-Apr-09	724	724	713	738
06-May-09	721	721	710	735
03-Jun-09	736	736	727	750
01-Jul-09	773	773	767	790
05-Aug-09	752	752	746	769
02-Sep-09	788	788	782	805
07-Oct-09	749	749	742	765
04-Nov-09	749	749	742	765
02-Dec-09	776	776	769	792
06-Jan-10	754	767	763	786
03-Feb-10	772	785	781	804
03-Mar-10	778	791	787	810
07-Apr-10	827	840	835	858
05-May-10	840	854	848	872
02-Jun-10	813	827	821	845
07-Jul-10	798	812	803	827
04-Aug-10	788	802	793	817
01-Sep-10	778	792	783	807
06-Oct-10	782	796	788	812
03-Nov-10	802	816	808	832
01-Dec-10	815	829	821	845
05-Jan-11	844	858	849	873
02-Feb-11	870	884	875	899
02-Mar-11	913	927	918	942
06-Apr-11	960	980	966	996
04-May-11	989	1009	995	1025
01-Jun-11	987	1007	993	1023
06-Jul-11	954	974	962	992
03-Aug-11	971	991	979	1009
07-Sep-11	980	1000	988	1018
05-Oct-11	1017	1037	1024	1054
02-Nov-11	1040	1060	1047	1077
07-Dec-11	1029	1049	1036	1066
04-Jan-12	1023	1043	1031	1061



Period	Petrol ULP 93		Petrol ULP 95	
	Coast	Gauteng	Coast	Gauteng
01-Feb-12	1057	1077	1065	1095
07-Mar-12	1085	1105	1093	1123
04-Apr-12	1152	1177	1159	1194
02-May-12	1180	1205	1187	1222
06-Jun-12	1125	1150	1132	1167
04-Jul-12	1036	1061	1047	1082
01-Aug-12	1058	1083	1069	1104
05-Sep-12	1151	1176	1162	1197
03-Oct-12	1172	1197	1185	1220
07-Nov-12	1162	1187	1175	1210
05-Dec-12	1153	1178	1166	1201
02-Jan-13	1140	1165	1151	1186
06-Feb-13	1181	1206	1192	1227
06-Mar-13	1262	1287	1273	1308
03-Apr-13	1270	1297	1283	1320
01-May-13	1197	1224	1210	1247
05-Jun-13	1189	1216	1202	1239
03-Jul-13	1273	1300	1286	1323
07-Aug-13	1305	1332	1318	1255
04-Sep-13	1300	1327	1313	1350
02-Oct-13	1281	1308	1293	1330
06-Nov-13	1253	1280	1265	1302
04-Dec-13	1270	1297	1282	1319
07-Jan-14	1309	1336	1357	1320
04-Feb-14	1348	1375	1396	1359
04-Mar-14	1384	1411	1432	1395
08-Apr-14	1385	1416	1439	1398
06-May-14	1370	1401	1424	1383
03-Jun-14	1348	1379	1402	1361
01-Jul-14	1377	1408	1433	1392
05-Aug-14	1377	1408	1433	1392
02-Sep-14	1310	1341	1366	1325
07-Oct-14	1312	1343	1361	1320
04-Nov-14	1267	1298	1316	1275
02-Dec-14	1198	1229	1247	1206
07-Jan-15	1071	1102	1083	1124
04-Feb-15	978	1009	990	1031
04-Mar-15	1074	1105	1086	1127



Period	Petrol ULP 93		Petrol ULP 95	
	Coast	Gauteng	Coast	Gauteng
01-Apr-15	1228	1261	1246	1289
06-May-15	1228	1261	1246	1289
03-Jun-15	1275	1308	1293	1336
01-Jul-15	1319	1352	1334	1377
05-Aug-15	1268	1301	1283	1326
02-Sep-15	1199	1232	1214	1257
07-Oct-15	1197	1230	1218	1261
04-Nov-15	1175	1208	1196	1239
02-Dec-15	1176	1209	1197	1240

Source: Department of Energy



Figure 24 Petrol (ULP 95 & 93) Prices, Crude Oil Prices and Rand/Dollar Exchange Rate (2006 - 2015)

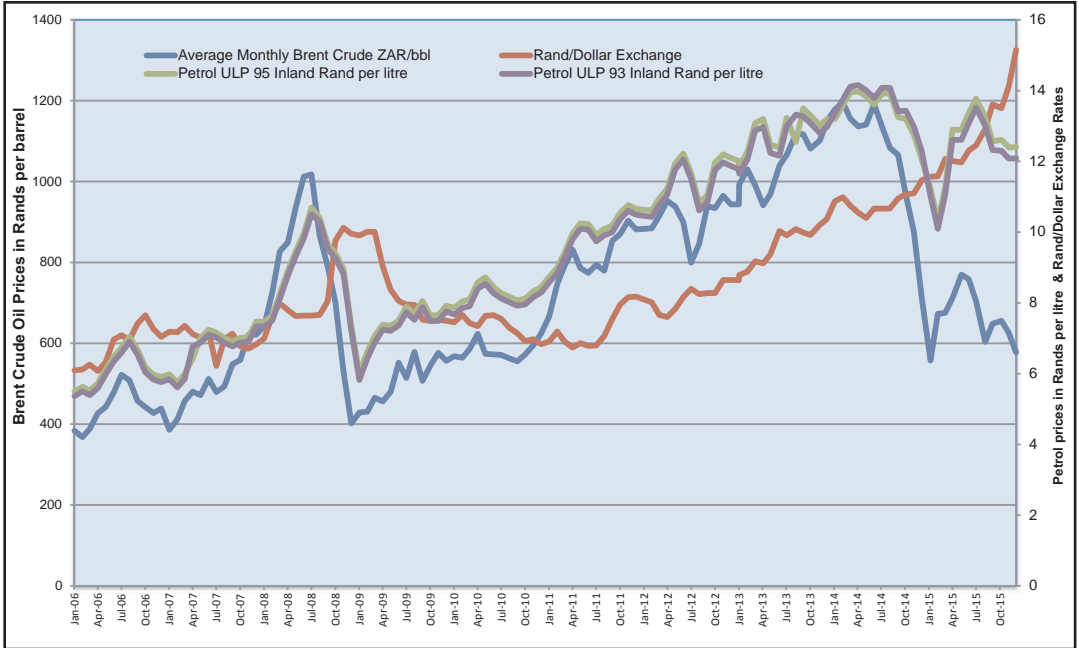




Table 2-2 Individual Components Contribution for Petrol ULP 93 Prices in cents (2006-2015)

Period	BFP	Custom & Excise duty	Dealers margin	Fuel Levy	Incremental transport recover levy	IP Tracer levy	Petroleum Pipeline levy	RAF levy	Service cost recoveries	Slate levy	Wholesale Margin	Zone differential in Gauteng	DMSL	Equalisation Fund levy	Pump Rounding	Final Pump Price (Inland)
01-Jan-06	269.21	4.00	43.60	116.00	0.00	0.00	0.00	31.50	7.00	15.00	39.27	13.40	0.00	0.00	0.00	536.00
01-Feb-06	280.23	4.00	43.60	116.00	0.00	0.00	0.00	31.50	7.00	15.00	39.27	13.40	0.00	0.00	0.00	550.00
01-Mar-06	269.23	4.00	43.60	116.00	0.00	0.00	0.00	31.50	7.00	15.00	39.27	13.40	0.00	0.00	0.00	539.00
03-May-06	334.63	4.00	43.90	116.00	0.00	0.00	0.00	36.50	7.00	5.00	39.27	13.70	0.00	0.00	0.00	600.00
07-Jun-06	370.63	4.00	43.90	116.00	0.00	0.00	0.00	36.50	7.00	5.00	39.27	13.70	0.00	0.00	0.00	636.00
05-Jul-06	395.63	4.00	43.90	116.00	0.00	0.00	0.00	36.50	7.00	5.00	39.27	13.70	0.00	0.00	0.00	661.00
02-Aug-06	426.63	4.00	43.90	116.00	0.00	0.00	0.00	36.50	7.00	5.00	39.27	13.70	0.00	0.00	0.00	692.00
06-Sep-06	426.63	4.00	43.90	116.00	0.00	0.00	0.00	36.50	7.00	5.00	39.27	13.70	0.00	0.00	0.00	692.00
04-Oct-06	337.63	4.00	46.90	116.00	0.00	0.00	0.00	36.50	7.00	5.00	39.27	13.70	0.00	0.00	0.00	606.00
01-Nov-06	316.63	4.00	46.90	116.00	0.00	0.00	0.00	36.50	7.00	5.00	39.27	13.70	0.00	0.00	0.00	585.00
06-Dec-06	309.63	4.00	46.90	116.00	0.00	0.00	0.00	36.50	7.00	5.00	39.27	13.70	0.00	0.00	0.00	578.00
03-Jan-07	315.63	4.00	46.90	116.00	0.00	0.00	0.00	36.50	7.00	5.00	39.27	13.70	0.00	0.00	0.00	584.00
07-Feb-07	292.63	4.00	46.90	116.00	0.00	0.00	0.19	36.50	7.00	5.00	39.27	13.70	0.00	0.00	0.00	561.00
07-Mar-07	315.53	4.00	48.00	116.00	0.00	0.00	0.19	36.50	7.00	4.81	39.27	13.70	0.00	0.00	0.00	585.00
04-Apr-07	374.53	4.00	48.00	121.00	0.00	0.00	0.19	41.50	7.00	4.81	39.27	13.70	0.00	0.00	0.00	654.00
02-May-07	408.53	4.00	48.00	121.00	0.00	0.00	0.19	41.50	7.00	4.81	39.27	13.70	0.00	0.00	0.00	688.00
06-Jun-07	431.33	4.00	48.00	121.00	0.00	0.00	0.19	41.50	7.00	4.81	39.27	13.90	0.00	0.00	0.00	711.00
04-Jul-07	423.33	4.00	48.00	121.00	0.00	0.00	0.19	41.50	7.00	4.81	39.27	13.90	0.00	0.00	0.00	703.00
01-Aug-07	408.33	4.00	48.00	121.00	0.00	0.00	0.19	41.50	7.00	4.81	39.27	13.90	0.00	0.00	0.00	688.00
05-Sep-07	386.63	4.00	59.70	121.00	0.00	0.00	0.19	41.50	7.00	4.81	39.27	13.90	0.00	0.00	0.00	678.00
03-Oct-07	395.63	4.00	59.70	121.00	0.00	0.00	0.19	41.50	7.00	4.81	39.27	13.90	0.00	0.00	0.00	687.00
07-Nov-07	398.63	4.00	59.70	121.00	0.00	0.00	0.19	41.50	7.00	4.81	39.27	13.90	0.00	0.00	0.00	690.00
05-Dec-07	441.63	4.00	59.70	121.00	0.00	0.00	0.19	41.50	7.00	4.81	39.27	13.90	0.00	0.00	0.00	733.00
02-Jan-08	441.63	4.00	59.70	121.00	0.00	0.00	0.19	41.50	7.00	4.81	39.27	13.90	0.00	0.00	0.00	733.00
06-Feb-08	458.63	4.00	59.70	121.00	0.00	0.00	0.19	41.50	7.00	4.81	39.27	13.90	0.00	0.00	0.00	750.00



Period	BFP	Custom & Excise duty	Dealers margin	Fuel Levy	Incremental transport recover levy	IP Tracer levy	Petroleum Pipeline levy	RAF levy	Service cost recoveries	Slate levy	Wholesale Margin	Zone differential in Gauteng	DMSL	Equalisation Fund levy	Pump Rounding	Final Pump Price (Inland)
05-Mar-08	519.63	4.00	59.70	121.00	0.00	0.00	0.19	41.50	7.00	4.81	39.27	13.90	0.00	0.00	0.00	811.00
02-Apr-08	575.63	4.00	59.70	127.00	0.00	0.00	0.19	46.50	7.00	4.85	39.27	13.90	0.00	0.00	0.00	878.00
07-May-08	606.63	4.00	59.70	127.00	1.50	0.00	0.15	46.50	7.00	24.85	39.27	13.90	0.00	0.00	0.00	933.00
04-Jun-08	651.63	4.00	64.70	127.00	1.50	0.00	0.15	46.50	9.50	24.85	39.27	13.90	0.00	0.00	0.00	983.00
02-Jul-08	723.23	4.00	64.70	127.00	1.50	0.00	0.15	46.50	9.50	24.85	44.67	13.90	0.00	0.00	0.00	1060.00
06-Aug-08	682.63	4.00	64.70	127.00	1.50	0.00	0.15	46.50	9.50	24.85	44.67	14.50	0.00	0.00	0.00	1017.00
03-Sep-08	593.63	4.00	64.70	127.00	1.50	0.00	0.15	46.50	9.50	44.85	44.67	14.50	0.00	0.00	0.00	951.00
05-Nov-08	519.03	4.00	67.30	127.00	1.50	0.00	0.15	46.50	9.50	44.85	44.67	14.50	0.00	0.00	0.00	879.00
03-Dec-08	358.03	4.00	67.30	127.00	1.50	0.00	0.15	46.50	9.50	44.85	44.67	14.50	0.00	0.00	0.00	718.00
02-Jan-09	265.98	4.00	67.30	127.00	1.50	0.00	0.15	46.50	9.50	0.00	44.67	15.40	0.00	0.00	0.00	582.00
07-Feb-09	326.98	4.00	67.30	127.00	1.50	0.00	0.15	46.50	9.50	0.00	44.67	15.40	0.00	0.00	0.00	643.00
04-Mar-09	371.98	4.00	67.30	127.00	1.50	0.00	0.15	46.50	9.50	0.00	44.67	15.40	0.00	0.00	0.00	688.00
04-Apr-09	367.48	4.00	67.30	150.00	1.50	0.00	0.15	64.00	9.50	0.00	44.67	15.40	0.00	0.00	0.00	724.00
01-May-09	364.48	4.00	67.30	150.00	1.50	0.00	0.15	64.00	9.50	0.00	44.67	15.40	0.00	0.00	0.00	721.00
06-Jun-09	379.38	4.00	67.30	150.00	3.00	0.00	0.15	64.00	9.50	0.00	44.67	14.00	0.00	0.00	0.00	736.00
03-Jul-09	416.38	4.00	67.30	150.00	3.00	0.00	0.15	64.00	9.50	0.00	44.67	14.00	0.00	0.00	0.00	773.00
01-Aug-09	389.98	4.00	72.70	150.00	3.00	0.00	0.15	64.00	9.50	0.00	44.67	14.00	0.00	0.00	0.00	752.00
05-Sep-09	425.98	4.00	72.70	150.00	3.00	0.00	0.15	64.00	9.50	0.00	44.67	14.00	0.00	0.00	0.00	788.00
02-Oct-09	379.48	4.00	72.70	150.00	3.00	0.00	0.15	64.00	10.80	0.00	50.87	14.00	0.00	0.00	0.00	749.00
07-Nov-09	379.48	4.00	72.70	150.00	3.00	0.00	0.15	64.00	10.80	0.00	50.87	14.00	0.00	0.00	0.00	749.00
04-Dec-09	406.48	4.00	72.70	150.00	3.00	0.00	0.15	64.00	10.80	0.00	50.87	14.00	0.00	0.00	0.00	776.00
07-Jan-10	397.48	4.00	72.70	150.00	3.00	0.00	0.15	64.00	10.80	0.00	50.87	14.00	0.00	0.00	0.00	767.00
02-Feb-10	415.48	4.00	72.70	150.00	3.00	0.00	0.15	64.00	10.80	0.00	50.87	14.00	0.00	0.00	0.00	785.00
06-Mar-10	421.78	4.00	72.70	150.00	3.00	0.00	0.15	64.00	10.80	0.00	50.87	14.00	0.00	0.00	-0.30	791.00
03-Apr-10	445.28	4.00	72.70	167.50	3.00	0.00	0.15	72.00	10.80	0.00	50.87	14.00	0.00	0.00	-0.30	840.00
03-May-10	457.28	4.00	72.70	167.50	3.00	0.00	0.15	72.00	10.80	0.00	50.87	15.50	0.00	0.00	0.20	854.00
07-Jun-10	445.28	4.00	72.70	167.50	3.00	0.00	0.15	72.00	10.80	0.00	50.87	15.50	0.00	0.00	0.20	842.00



Period	BFP	Custom & Excise duty	Dealers margin	Fuel Levy	Incremental transport recover levy	IP Tracer levy	Petroleum Pipeline levy	RAF levy	Service cost recoveries	Slate levy	Wholesale Margin	Zone differential in Gauteng	DMSL	Equalisation Fund levy	Pump Rounding	Final Pump Price (Inland)
05-Jul-10	457.28	4.00	72.70	167.50	3.00	0.00	0.15	72.00	10.80	0.00	50.87	15.50	0.00	0.00	0.20	854.00
02-Aug-10	405.28	4.00	72.70	167.50	3.00	0.00	0.15	72.00	10.80	0.00	50.87	15.50	0.00	0.00	0.20	802.00
07-Sep-10	395.28	4.00	72.70	167.50	3.00	0.00	0.15	72.00	10.80	0.00	50.87	15.50	0.00	0.00	0.20	792.00
04-Oct-10	390.78	4.00	81.20	167.50	3.00	0.00	0.15	72.00	10.80	0.00	50.87	15.50	0.00	0.00	0.20	796.00
01-Nov-10	410.78	4.00	81.20	167.50	3.00	0.00	0.15	72.00	10.80	0.00	50.87	15.50	0.00	0.00	0.20	816.00
06-Dec-10	423.78	4.00	81.20	167.50	3.00	0.00	0.15	72.00	10.80	0.00	50.87	15.50	0.00	0.00	0.20	829.00
03-Jan-11	449.18	4.00	81.20	167.50	3.00	0.00	0.15	72.00	11.40	0.00	53.87	15.50	0.00	0.00	0.20	858.00
01-Feb-11	475.18	4.00	81.20	167.50	3.00	0.00	0.15	72.00	11.40	0.00	53.87	15.50	0.00	0.00	0.20	884.00
05-Mar-11	518.18	4.00	81.20	167.50	3.00	0.00	0.15	72.00	11.40	0.00	53.87	15.50	0.00	0.00	0.20	927.00
02-Apr-11	546.38	4.00	81.20	177.50	3.00	0.00	0.15	80.00	11.40	0.00	53.87	22.90	0.00	0.00	0.40	980.00
02-May-11	575.38	4.00	81.20	177.50	3.00	0.00	0.15	80.00	11.40	0.00	53.87	22.90	0.00	0.00	0.40	1009.00
06-Jun-11	573.38	4.00	81.20	177.50	3.00	0.00	0.15	80.00	11.40	0.00	53.87	22.90	0.00	0.00	0.40	1007.00
04-Jul-11	540.38	4.00	81.20	177.50	3.00	0.00	0.15	80.00	11.40	0.00	53.87	22.90	0.00	0.00	0.40	974.00
01-Aug-11	557.38	4.00	81.20	177.50	3.00	0.00	0.15	80.00	11.40	0.00	53.87	22.90	0.00	0.00	0.40	991.00
06-Sep-11	566.38	4.00	81.20	177.50	3.00	0.00	0.15	80.00	11.40	0.00	53.87	22.90	0.00	0.00	0.40	1000.00
03-Oct-11	599.38	4.00	85.20	177.50	3.00	0.00	0.15	80.00	11.40	0.00	53.87	22.90	0.00	0.00	0.40	1037.00
07-Nov-11	622.38	4.00	85.20	177.50	3.00	0.00	0.15	80.00	11.40	0.00	53.87	22.90	0.00	0.00	0.40	1060.00
05-Dec-11	596.55	4.00	91.80	177.50	3.00	0.00	0.15	80.00	21.00	0.00	52.50	22.90	0.00	0.00	0.40	1049.00
04-Jan-12	590.55	4.00	91.80	177.50	3.00	0.00	0.15	80.00	21.00	0.00	52.50	22.90	0.00	0.00	0.40	1043.00
01-Feb-12	624.55	4.00	91.80	177.50	3.00	0.00	0.15	80.00	21.00	0.00	52.50	22.90	0.00	0.00	0.40	1077.00
07-Mar-12	648.17	4.00	91.80	177.50	3.00	0.00	0.15	80.00	21.00	4.38	52.50	22.90	0.00	0.00	0.40	1105.00
04-Apr-12	687.57	4.00	91.80	197.50	3.00	0.00	0.15	88.00	21.00	4.38	52.50	26.80	0.00	0.00	0.30	1177.00
02-May-12	711.17	4.00	91.80	197.50	3.00	0.00	0.15	88.00	21.00	8.78	52.50	26.80	0.00	0.00	0.30	1205.00
06-Jun-12	653.99	4.00	91.80	197.50	3.00	0.00	0.15	88.00	21.00	10.96	52.50	26.80	0.00	0.00	0.30	1150.00
04-Jul-12	571.57	4.00	91.80	197.50	3.00	0.00	0.15	88.00	21.00	4.38	52.50	26.80	0.00	0.00	0.30	1061.00
01-Aug-12	597.95	4.00	91.80	197.50	3.00	0.00	0.15	88.00	21.00	0.00	52.50	26.80	0.00	0.00	0.30	1083.00
05-Sep-12	687.45	4.00	95.30	197.50	3.00	0.00	0.15	88.00	21.00	0.00	52.50	26.80	0.00	0.00	0.30	1176.00



Period	BFP	Custom & Excise duty	Dealers margin	Fuel Levy	Incremental transport recover levy	IP Tracer levy	Petroleum Pipeline levy	RAF levy	Service cost recoveries	Slate levy	Wholesale Margin	Zone differential in Gauteng	DMSL	Equalisation Fund levy	Pump Rounding	Final Pump Price (Inland)
03-Oct-12	695.29	4.00	95.30	197.50	3.00	0.00	0.15	88.00	21.00	13.16	52.50	26.80	0.00	0.00	0.30	1197.00
07-Nov-12	683.09	4.00	95.30	197.50	3.00	0.00	0.15	88.00	21.00	15.36	52.50	26.80	0.00	0.00	0.30	1187.00
05-Dec-12	660.19	4.00	99.20	197.50	3.00	0.00	0.15	88.00	25.50	15.36	58.00	26.80	0.00	0.00	0.30	1178.00
02-Jan-13	653.77	4.00	99.20	197.50	3.00	0.00	0.15	88.00	25.50	8.78	58.00	26.80	0.00	0.00	0.30	1165.00
01-Feb-13	696.97	4.00	99.20	197.50	3.00	0.00	0.15	88.00	25.50	6.58	58.00	26.80	0.00	0.00	0.30	1206.00
06-Mar-13	773.59	4.00	99.20	197.50	3.00	0.00	0.15	88.00	25.50	10.96	58.00	26.80	0.00	0.00	0.30	1287.00
03-Apr-13	747.43	4.00	99.20	212.50	3.00	0.00	0.15	96.00	25.50	21.92	58.00	28.90	0.00	0.00	0.40	1297.00
01-May-13	680.99	4.00	99.20	212.50	3.00	0.00	0.15	96.00	25.50	15.36	58.00	28.90	0.00	0.00	0.40	1224.00
05-Jun-13	683.97	4.00	99.20	212.50	3.00	0.00	0.15	96.00	25.50	4.38	58.00	28.90	0.00	0.00	0.40	1216.00
03-Jul-13	765.77	4.00	99.20	212.50	3.00	0.00	0.15	96.00	25.50	6.58	58.00	28.90	0.00	0.00	0.40	1300.00
07-Aug-13	786.81	4.00	99.20	212.50	3.00	0.00	0.15	96.00	25.50	17.54	58.00	28.90	0.00	0.00	0.40	1332.00
04-Sep-13	783.99	4.00	99.20	212.50	3.00	0.00	0.15	96.00	25.50	15.36	58.00	28.90	0.00	0.00	0.40	1327.00
02-Oct-13	760.09	4.00	104.10	212.50	3.00	0.00	0.15	96.00	25.50	15.36	58.00	28.90	0.00	0.00	0.40	1308.00
06-Nov-13	734.29	4.00	104.10	212.50	3.00	0.00	0.15	96.00	25.50	13.16	58.00	28.90	0.00	0.00	0.40	1280.00
04-Dec-13	744.37	4.00	139.10	212.50	3.00	0.00	0.15	96.00	17.10	8.78	31.00	28.90	0.00	0.00	0.40	1297.00
07-Jan-14	781.19	4.00	139.10	212.50	3.00	0.00	0.15	96.00	0.00	10.96	31.00	28.90	0.00	0.00	0.40	1336.00
04-Feb-14	828.99	4.00	139.10	212.50	3.00	0.00	0.15	96.00	0.00	13.16	31.00	28.90	0.00	0.00	0.40	1375.00
04-Mar-14	851.79	4.00	139.10	212.50	3.00	0.00	0.15	96.00	0.00	15.36	31.00	28.90	0.00	0.00	0.40	1411.00
08-Apr-14	835.59	4.00	139.10	224.50	0.00	0.00	0.15	104.00	0.00	15.36	31.00	33.10	0.00	0.00	0.40	1416.00
06-May-14	829.37	4.00	139.10	224.50	0.00	0.00	0.15	104.00	0.00	6.58	31.00	33.10	0.00	0.00	0.40	1401.00
03-Jun-14	813.95	4.00	139.10	224.50	0.00	0.00	0.15	104.00	0.00	0.00	31.00	33.10	0.00	0.00	0.40	1379.00
01-Jul-14	842.95	4.00	139.10	224.50	0.00	0.00	0.15	104.00	0.00	0.00	31.00	33.10	0.00	0.00	0.40	1408.00
05-Aug-14	838.57	4.00	139.10	224.50	0.00	0.00	0.15	104.00	0.00	4.38	31.00	33.10	0.00	0.00	0.40	1408.00
02-Sep-14	771.75	4.00	143.30	224.50	0.00	0.00	0.15	104.00	0.00	0.00	31.00	33.10	0.00	0.00	0.40	1341.00
07-Oct-14	773.75	4.00	143.30	224.50	0.00	0.00	0.15	104.00	0.00	0.00	31.00	33.10	0.00	0.00	0.40	1343.00
04-Nov-14	728.75	4.00	143.30	224.50	0.00	0.00	0.15	104.00	0.00	0.00	31.00	33.10	0.00	0.00	0.40	1298.00



Period	BFP	Custom & Excise duty	Dealers margin	Fuel Levy	Incremental transport recover levy	IP Tracer levy	Petroleum Pipeline levy	RAF levy	Service cost recoveries	Slate levy	Wholesale Margin	Zone differential in Gauteng	DMSL	Equalisation Fund levy	Pump Rounding	Final Pump Price (Inland)
02-Dec-14	648.25	4.00	143.30	224.50	0.00	0.00	0.15	104.00	0.00	0.00	33.50	33.10	0.00	0.00	0.40	1229.00
07-Jan-15	521.25	4.00	151.10	224.50	0.00	0.00	0.15	104.00	0.00	0.00	33.50	33.10	0.00	0.00	0.40	1102.00
04-Feb-15	428.25	4.00	151.10	224.50	0.00	0.00	0.15	104.00	0.00	0.00	33.50	33.10	0.00	0.00	0.40	1009.00
04-Mar-15	524.25	4.00	151.10	224.50	0.00	0.00	0.15	104.00	0.00	0.00	33.50	33.10	0.00	0.00	0.40	1105.00
01-Apr-15	579.65	4.00	151.10	255.00	0.00	0.00	0.15	154.00	0.00	0.00	33.50	35.30	0.00	0.00	0.30	1261.00
06-May-15	579.65	4.00	151.10	255.00	0.00	0.00	0.15	154.00	0.00	0.00	33.50	35.30	0.00	0.00	0.30	1261.00
03-Jun-15	644.60	4.00	151.10	255.00	0.00	0.00	0.15	154.00	0.00	0.00	33.50	35.30	0.00	0.00	0.30	1308.00
01-Jul-15	688.65	4.00	151.10	255.00	0.00	0.00	0.15	154.00	0.00	0.00	33.50	35.30	0.00	0.00	0.30	1352.00
05-Aug-15	637.47	4.00	151.10	255.00	0.00	0.00	0.33	154.00	0.00	0.00	33.50	35.30	0.00	0.00	0.30	1301.00
02-Sep-15	563.87	4.00	155.70	255.00	0.00	0.00	0.33	154.00	0.00	0.00	33.50	35.30	0.00	0.00	0.30	1232.00
07-Oct-15	561.87	4.00	155.70	255.00	0.00	0.00	0.33	154.00	0.00	0.00	33.50	35.30	0.00	0.00	0.30	1230.00
04-Nov-15	539.87	4.00	155.70	255.00	0.00	0.00	0.33	154.00	0.00	0.00	33.50	35.30	0.00	0.00	0.30	1208.00
02-Dec-15	532.97	4.00	161.70	255.00	0.00	0.00	0.33	154.00	0.00	0.00	33.50	35.30	0.00	0.00	0.30	1209.00

Source: Department of Energy

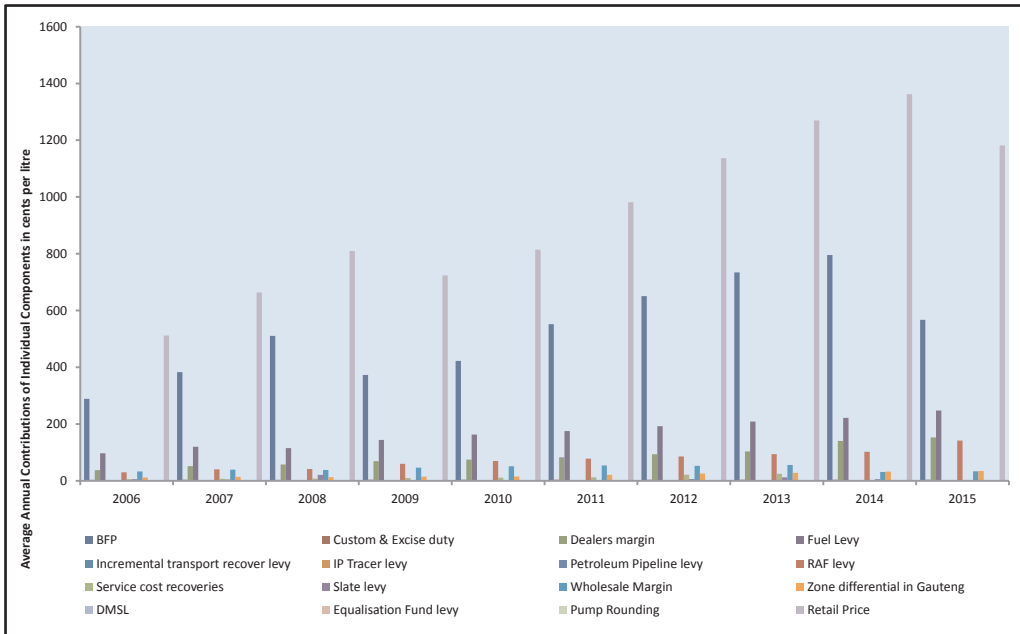
Table 2-3 Average Annual Contributions of Individual Components Petrol ULP 93 in cents (2006-2015)

Period	BFP	Custom & Excise duty	Dealers margin	Fuel Levy	Incremental transport recover levy	IP Tracer levy	Petroleum Pipeline levy	RAF levy	Service cost recoveries	Slate levy	Wholesale Margin	Zone differential in Gauteng	DMSL	Equalisation Fund levy	Pump Rounding	Retail Price
2006	288.96	3.33	37.28	96.67	0.00	0.00	0.00	29.58	5.83	5.83	32.73	11.37	0.00	0.00	0.00	511.58
2007	382.70	4.00	51.72	119.75	0.00	0.00	0.17	40.25	7.00	4.84	39.27	13.82	0.00	0.00	0.00	663.50
2008	510.86	3.67	57.66	114.92	0.88	0.00	0.15	41.38	7.67	21.10	38.25	12.94	0.00	0.00	0.00	809.42
2009	372.84	4.00	69.55	144.25	2.38	0.00	0.15	59.63	9.83	0.00	46.22	14.58	0.00	0.00	0.00	723.42
2010	422.15	4.00	74.83	163.13	3.00	0.00	0.15	70.00	10.80	0.00	50.87	15.00	0.00	0.00	0.08	814.00
2011	551.68	4.00	82.75	175.00	3.00	0.00	0.15	78.00	12.20	0.00	53.76	21.05	0.00	0.00	-0.25	981.33
2012	650.96	4.00	93.29	192.50	3.00	0.00	0.15	86.00	21.38	6.40	52.96	25.83	0.00	0.00	0.13	1136.58
2013	734.34	4.00	103.34	208.75	3.00	0.00	0.15	94.00	24.80	12.06	55.75	28.38	0.00	0.00	0.38	1269.92
2014	795.41	4.00	140.50	221.50	0.75	0.00	0.15	102.00	0.00	5.48	31.21	32.05	0.00	0.00	0.40	1362.08
2015	566.86	4.00	153.13	247.38	0.00	0.00	0.23	141.50	0.00	0.00	33.50	34.75	0.00	0.00	0.33	1181.67

Source: Department of Energy



Figure 2-2 Average Annual Contributions of Individual Components for Petrol ULP 93 in cents (2006-2015)



Source: Department of Energy



Table 2-4 Individual Components Contribution for Petrol ULP 95 Prices in cents (2006-2015)

Period	BFP	Custom & Excise duty	Dealers margin	Fuel Levy	Incremental transport recover levy	IP Tracer levy	Petroleum Pipeline levy	RAF levy	Service cost recoveries	Slate levy	Wholesale Margin	Zone differential in Gauteng	DMSL	Equalisation Fund levy	Pump Rounding	Final Pump Price (Inland)	Final Pump Price (Coastal)
01Jan-06	269.21	4.00	43.60	116.00	0.00	0.00	0.00	31.50	7.00	15.00	39.27	13.40	10.00	0.00	0.00	526.00	549.00
01Feb-06	283.01	4.00	43.60	116.00	0.00	0.00	0.00	31.50	7.00	15.00	39.27	13.40	10.00	0.00	0.00	563.00	540.00
01Mar-06	272.01	4.00	43.60	116.00	0.00	0.00	0.00	31.50	7.00	15.00	39.27	13.40	10.00	0.00	0.00	552.00	529.00
03-May-06	297.41	4.00	43.90	116.00	0.00	0.00	0.00	36.50	7.00	5.00	39.27	13.70	10.00	0.00	0.00	612.00	549.00
07Jun-06	336.41	4.00	43.90	116.00	0.00	0.00	0.00	36.50	7.00	5.00	39.27	13.70	10.00	0.00	0.00	648.00	588.00
05Jul-06	372.41	4.00	43.90	116.00	0.00	0.00	0.00	36.50	7.00	5.00	39.27	13.70	10.00	0.00	0.00	673.00	624.00
02Aug-06	397.41	4.00	43.90	116.00	0.00	0.00	0.00	36.50	7.00	5.00	39.27	13.70	10.00	0.00	0.00	704.00	649.00
06-Sep-06	428.41	4.00	43.90	116.00	0.00	0.00	0.00	36.50	7.00	5.00	39.27	13.70	10.00	0.00	0.00	668.00	680.00
04-Oct-06	392.41	4.00	46.90	116.00	0.00	0.00	0.00	36.50	7.00	5.00	39.27	13.70	10.00	0.00	0.00	618.00	644.00
01Nov-06	339.63	4.00	46.90	116.00	0.00	0.00	0.00	36.50	7.00	5.00	39.27	13.70	10.00	0.00	0.00	597.00	594.00
06-Dec-06	318.41	4.00	46.90	116.00	0.00	0.00	0.00	36.50	7.00	5.00	39.27	13.70	10.00	0.00	0.00	590.00	573.00
03-Jan-07	311.41	4.00	46.90	116.00	0.00	0.00	0.00	36.50	7.00	5.00	39.27	13.70	10.00	0.00	0.00	598.00	574.00
07Feb-07	296.41	4.00	46.90	116.00	0.00	0.00	0.19	36.50	7.00	5.00	39.27	13.70	10.00	0.00	0.00	575.00	551.00
07Mar-07	319.31	4.00	48.00	116.00	0.00	0.00	0.19	36.50	7.00	4.81	39.27	13.70	10.00	0.00	0.00	599.00	575.00
04-Apr-07	377.31	4.00	48.00	121.00	0.00	0.00	0.19	41.50	7.00	4.81	39.27	13.70	10.00	0.00	0.00	643.00	643.00
02-May-07	411.31	4.00	48.00	121.00	0.00	0.00	0.19	41.50	7.00	4.81	39.27	13.70	10.00	0.00	0.00	701.00	677.00
06-Jun-07	434.31	4.00	48.00	121.00	0.00	0.00	0.19	41.50	7.00	4.81	39.27	13.90	10.00	0.00	0.00	724.00	700.00
04-Jul-07	426.11	4.00	48.00	121.00	0.00	0.00	0.19	41.50	7.00	4.81	39.27	13.90	10.00	0.00	0.00	716.00	692.00
01-Aug-07	411.11	4.00	48.00	121.00	0.00	0.00	0.19	41.50	7.00	4.81	39.27	13.90	10.00	0.00	0.00	701.00	677.00
05-Sep-07	389.41	4.00	59.70	121.00	0.00	0.00	0.19	41.50	7.00	4.81	39.27	13.90	10.00	0.00	0.00	691.00	667.00
03-Oct-07	399.41	4.00	59.70	121.00	0.00	0.00	0.19	41.50	7.00	4.81	39.27	13.90	10.00	0.00	0.00	701.00	677.00
07-Nov-07	402.41	4.00	59.70	121.00	0.00	0.00	0.19	41.50	7.00	4.81	39.27	13.90	10.00	0.00	0.00	704.00	680.00
05-Dec-07	445.41	4.00	59.70	121.00	0.00	0.00	0.19	41.50	7.00	4.81	39.27	13.90	10.00	0.00	0.00	747.00	723.00
02-Jan-08	445.41	4.00	59.70	121.00	0.00	0.00	0.19	41.50	7.00	4.81	39.27	13.90	10.00	0.00	0.00	747.00	723.00
06-Feb-08	462.41	4.00	59.70	121.00	0.00	0.00	0.19	41.50	7.00	4.81	39.27	13.90	10.00	0.00	0.00	764.00	740.00



Period	BFP	Custom & Excise duty	Dealers margin	Fuel Levy	Incremental transport recover levy	IP Tracer levy	Petroleum Pipeline levy	RAF levy	Service cost recoveries	Slate levy	Wholesale Margin	Zone differential in Gauteng	DMSL	Equalisation Fund levy	Pump Rounding	Final Pump Price (Inland)	Final Pump Price (Coastal)
05-Mar-08	523.41	4.00	59.70	121.00	0.00	0.00	0.19	41.50	7.00	4.81	39.27	13.90	10.00	0.00	0.00	825.00	801.00
02-Apr-08	578.41	4.00	59.70	127.00	0.00	0.00	0.19	46.50	7.00	4.85	39.27	13.90	10.00	0.00	0.00	891.00	867.00
07-May-08	609.41	4.00	59.70	127.00	1.50	0.00	0.15	46.50	7.00	24.85	39.27	13.90	10.00	0.00	0.00	946.00	922.00
04-Jun-08	654.41	4.00	64.70	127.00	1.50	0.00	0.15	46.50	9.50	24.85	39.27	13.90	10.00	0.00	0.00	996.00	972.00
02-Jul-08	730.01	4.00	64.70	127.00	1.50	0.00	0.15	46.50	9.50	24.85	44.67	13.90	10.00	0.00	0.00	1070.00	1040.00
06-Aug-08	692.41	4.00	64.70	127.00	1.50	0.00	0.15	46.50	9.50	24.85	44.67	14.50	10.00	0.00	0.00	1040.00	1010.00
03-Sep-08	598.41	4.00	64.70	127.00	1.50	0.00	0.15	46.50	9.50	44.85	44.67	14.50	10.00	0.00	0.00	966.00	942.00
05-Nov-08	570.81	4.00	67.30	127.00	1.50	0.00	0.15	46.50	9.50	44.85	44.67	14.50	10.00	0.00	0.00	896.00	917.00
03-Dec-08	525.81	4.00	67.30	127.00	1.50	0.00	0.15	46.50	9.50	44.85	44.67	14.50	10.00	0.00	0.00	735.00	872.00
02-Jan-09	364.81	4.00	67.30	127.00	1.50	0.00	0.15	46.50	9.50	0.00	44.67	15.40	10.00	0.00	0.00	601.00	576.00
07-Feb-09	335.76	4.00	67.30	127.00	1.50	0.00	0.15	46.50	9.50	0.00	44.67	15.40	10.00	0.00	0.00	662.00	637.00
04-Mar-09	380.76	4.00	67.30	127.00	1.50	0.00	0.15	46.50	9.50	0.00	44.67	15.40	10.00	0.00	0.00	707.00	682.00
04-Apr-09	371.26	4.00	67.30	150.00	1.50	0.00	0.15	64.00	9.50	0.00	44.67	15.40	10.00	0.00	0.00	738.00	713.00
01-May-09	368.26	4.00	67.30	150.00	1.50	0.00	0.15	64.00	9.50	0.00	44.67	15.40	10.00	0.00	0.00	735.00	710.00
06-Jun-09	383.16	4.00	67.30	150.00	3.00	0.00	0.15	64.00	9.50	0.00	44.67	14.00	10.00	0.00	0.00	750.00	727.00
03-Jul-09	423.16	4.00	67.30	150.00	3.00	0.00	0.15	64.00	9.50	0.00	44.67	14.00	10.00	0.00	0.00	790.00	767.00
01-Aug-09	396.76	4.00	72.70	150.00	3.00	0.00	0.15	64.00	9.50	0.00	44.67	14.00	10.00	0.00	0.00	769.00	746.00
05-Sep-09	432.76	4.00	72.70	150.00	3.00	0.00	0.15	64.00	9.50	0.00	44.67	14.00	10.00	0.00	0.00	805.00	782.00
02-Oct-09	385.26	4.00	72.70	150.00	3.00	0.00	0.15	64.00	10.80	0.00	50.87	14.00	10.00	0.00	0.00	765.00	742.00
07-Nov-09	385.26	4.00	72.70	150.00	3.00	0.00	0.15	64.00	10.80	0.00	50.87	14.00	10.00	0.00	0.00	765.00	742.00
04-Dec-09	412.26	4.00	72.70	150.00	3.00	0.00	0.15	64.00	10.80	0.00	50.87	14.00	10.00	0.00	0.00	792.00	769.00
07-Jan-10	406.26	4.00	72.70	150.00	3.00	0.00	0.15	64.00	10.80	0.00	50.87	14.00	10.00	0.00	0.00	786.00	763.00
02-Feb-10	424.26	4.00	72.70	150.00	3.00	0.00	0.15	64.00	10.80	0.00	50.87	14.00	10.00	0.00	0.00	804.00	781.00
06-Mar-10	430.56	4.00	72.70	150.00	3.00	0.00	0.15	64.00	10.80	0.00	50.87	14.00	10.00	0.00	0.30	810.00	787.00
03-Apr-10	453.06	4.00	72.70	167.50	3.00	0.00	0.15	72.00	10.80	0.00	50.87	14.00	10.00	0.00	0.30	858.00	835.00
03-May-10	465.06	4.00	72.70	167.50	3.00	0.00	0.15	72.00	10.80	0.00	50.87	15.50	10.00	0.00	0.20	872.00	848.00



Period	BFP	Custom & Excise duty	Dealers margin	Fuel Levy	Incremental transport recover levy	IP Tracer levy	Petroleum Pipeline levy	RAF levy	Service cost recoveries	Slate levy	Wholesale Margin	Zone differential in Gauteng	DMSL	Equalisation Fund levy	Pump Rounding	Final Pump Price (Inland)	Final Pump Price (Coastal)
07Jun-10	438.06	4.00	72.70	167.50	3.00	0.00	0.15	72.00	10.80	0.00	50.87	15.50	10.00	0.00	0.20	845.00	821.00
05Jul-10	420.06	4.00	72.70	167.50	3.00	0.00	0.15	72.00	10.80	0.00	50.87	15.50	10.00	0.00	0.20	827.00	803.00
02Aug-10	410.06	4.00	72.70	167.50	3.00	0.00	0.15	72.00	10.80	0.00	50.87	15.50	10.00	0.00	0.20	817.00	793.00
07Sep-10	400.06	4.00	72.70	167.50	3.00	0.00	0.15	72.00	10.80	0.00	50.87	15.50	10.00	0.00	0.20	807.00	783.00
04Oct-10	396.56	4.00	81.20	167.50	3.00	0.00	0.15	72.00	10.80	0.00	50.87	15.50	10.00	0.00	0.20	812.00	788.00
01Nov-10	416.56	4.00	81.20	167.50	3.00	0.00	0.15	72.00	10.80	0.00	50.87	15.50	10.00	0.00	0.20	832.00	808.00
06Dec-10	429.56	4.00	81.20	167.50	3.00	0.00	0.15	72.00	10.80	0.00	50.87	15.50	10.00	0.00	0.20	845.00	821.00
03Jan-11	453.95	4.00	81.20	167.50	3.00	0.00	0.15	72.00	11.40	0.00	53.87	15.50	10.00	0.00	0.20	873.00	849.00
01Feb-11	479.95	4.00	81.20	167.50	3.00	0.00	0.15	72.00	11.40	0.00	53.87	15.50	10.00	0.00	0.20	899.00	875.00
05Mar-11	522.95	4.00	81.20	167.50	3.00	0.00	0.15	72.00	11.40	0.00	53.87	15.50	10.00	0.00	0.20	942.00	918.00
02Apr-11	552.15	4.00	81.20	177.50	3.00	0.00	0.15	80.00	11.40	0.00	53.87	22.90	10.00	0.00	0.40	996.00	966.00
02May-11	581.15	4.00	81.20	177.50	3.00	0.00	0.15	80.00	11.40	0.00	53.87	22.90	10.00	0.00	0.40	1025.00	995.00
06Jun-11	579.15	4.00	81.20	177.50	3.00	0.00	0.15	80.00	11.40	0.00	53.87	22.90	10.00	0.00	0.40	1023.00	993.00
04Jul-11	548.15	4.00	81.20	177.50	3.00	0.00	0.15	80.00	11.40	0.00	53.87	22.90	10.00	0.00	0.40	992.00	962.00
01Aug-11	565.15	4.00	81.20	177.50	3.00	0.00	0.15	80.00	11.40	0.00	53.87	22.90	10.00	0.00	0.40	1009.00	979.00
06Sep-11	574.15	4.00	81.20	177.50	3.00	0.00	0.15	80.00	11.40	0.00	53.87	22.90	10.00	0.00	0.40	1018.00	988.00
03Oct-11	606.15	4.00	85.20	177.50	3.00	0.00	0.15	80.00	11.40	0.00	53.87	22.90	10.00	0.00	0.40	1054.00	1024.00
07Nov-11	629.15	4.00	85.20	177.50	3.00	0.00	0.15	80.00	11.40	0.00	53.87	22.90	10.00	0.00	0.40	1077.00	1047.00
05Dec-11	603.55	4.00	91.80	177.50	3.00	0.00	0.15	80.00	21.00	0.00	52.50	22.90	10.00	0.00	0.40	1066.00	1036.00
04Jan-12	598.55	4.00	91.80	177.50	3.00	0.00	0.15	80.00	21.00	0.00	52.50	22.90	10.00	0.00	0.40	1061.00	1031.00
01Feb-12	632.55	4.00	91.80	177.50	3.00	0.00	0.15	80.00	21.00	0.00	52.50	22.90	10.00	0.00	0.40	1095.00	1065.00
07Mar-12	656.17	4.00	91.80	177.50	3.00	0.00	0.15	80.00	21.00	4.38	52.50	22.90	10.00	0.00	0.40	1123.00	1093.00
04Apr-12	694.57	4.00	91.80	197.50	3.00	0.00	0.15	88.00	21.00	4.38	52.50	26.80	10.00	0.00	0.30	1194.00	1159.00
02May-12	718.17	4.00	91.80	197.50	3.00	0.00	0.15	88.00	21.00	8.78	52.50	26.80	10.00	0.00	0.30	1222.00	1187.00
06Jun-12	660.99	4.00	91.80	197.50	3.00	0.00	0.15	88.00	21.00	10.96	52.50	26.80	10.00	0.00	0.30	1167.00	1132.00
04Jul-12	582.57	4.00	91.80	197.50	3.00	0.00	0.15	88.00	21.00	4.38	52.50	26.80	10.00	0.00	0.30	1082.00	1047.00



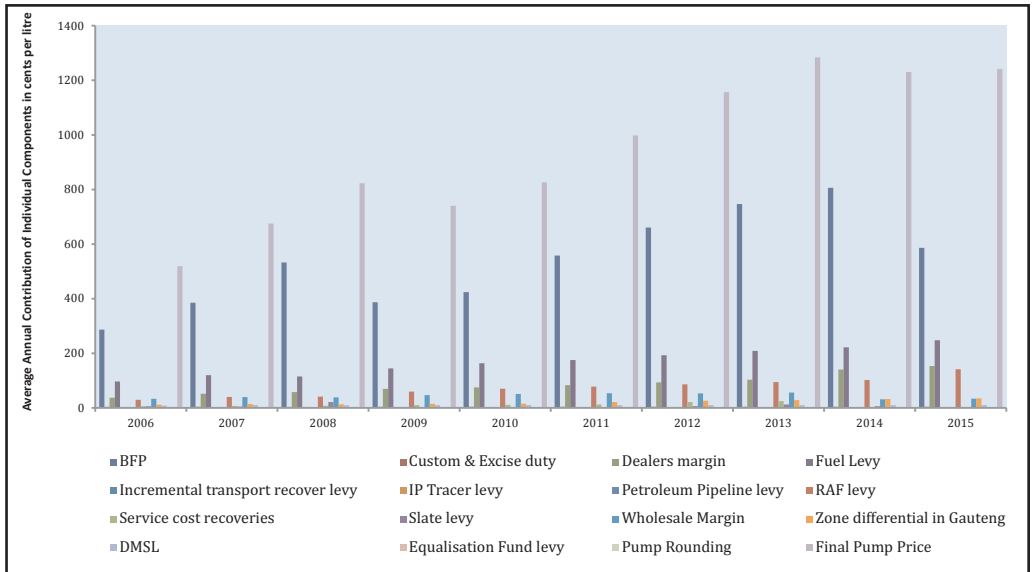
Period	BFP	Custom & Excise duty	Dealers margin	Fuel Levy	Incremental transport recover levy	IP Tracer levy	Petroleum Pipeline levy	RAF levy	Service cost recoveries	Slate levy	Wholesale Margin	Zone differential in Gauteng	DMSL	Equalisation Fund levy	Pump Rounding	Final Pump Price (Inland)	Final Pump Price (Coastal)
01-Aug-12	608.95	4.00	91.80	197.50	3.00	0.00	0.15	88.00	21.00	0.00	52.50	26.80	10.00	0.00	0.30	1104.00	1069.00
05-Sep-12	698.45	4.00	95.30	197.50	3.00	0.00	0.15	88.00	21.00	0.00	52.50	26.80	10.00	0.00	0.30	1197.00	1162.00
03-Oct-12	708.29	4.00	95.30	197.50	3.00	0.00	0.15	88.00	21.00	13.16	52.50	26.80	10.00	0.00	0.30	1220.00	1185.00
07-Nov-12	696.09	4.00	95.30	197.50	3.00	0.00	0.15	88.00	21.00	15.36	52.50	26.80	10.00	0.00	0.30	1210.00	1175.00
05-Dec-12	673.19	4.00	99.20	197.50	3.00	0.00	0.15	88.00	25.50	15.36	58.00	26.80	10.00	0.00	0.30	1201.00	1166.00
02-Jan-13	664.77	4.00	99.20	197.50	3.00	0.00	0.15	88.00	25.50	8.78	58.00	26.80	10.00	0.00	0.30	1186.00	1151.00
01-Feb-13	707.97	4.00	99.20	197.50	3.00	0.00	0.15	88.00	25.50	6.58	58.00	26.80	10.00	0.00	0.30	1227.00	1192.00
06-Mar-13	784.59	4.00	99.20	197.50	3.00	0.00	0.15	88.00	25.50	10.96	58.00	26.80	10.00	0.00	0.30	1308.00	1273.00
03-Apr-13	760.43	4.00	99.20	212.50	3.00	0.00	0.15	96.00	25.50	21.92	58.00	28.90	10.00	0.00	0.40	1320.00	1283.00
01-May-13	693.99	4.00	99.20	212.50	3.00	0.00	0.15	96.00	25.50	15.36	58.00	28.90	10.00	0.00	0.40	1247.00	1210.00
05-Jun-13	696.97	4.00	99.20	212.50	3.00	0.00	0.15	96.00	25.50	4.38	58.00	28.90	10.00	0.00	0.40	1239.00	1202.00
03-Jul-13	778.77	4.00	99.20	212.50	3.00	0.00	0.15	96.00	25.50	6.58	58.00	28.90	10.00	0.00	0.40	1323.00	1286.00
07-Aug-13	799.81	4.00	99.20	212.50	3.00	0.00	0.15	96.00	25.50	17.54	58.00	28.90	10.00	0.00	0.40	1255.00	1318.00
04-Sep-13	796.99	4.00	99.20	212.50	3.00	0.00	0.15	96.00	25.50	15.36	58.00	28.90	10.00	0.00	0.40	1350.00	1313.00
02-Oct-13	772.09	4.00	104.10	212.50	3.00	0.00	0.15	96.00	25.50	15.36	58.00	28.90	10.00	0.00	0.40	1330.00	1293.00
06-Nov-13	746.29	4.00	104.10	212.50	3.00	0.00	0.15	96.00	25.50	13.16	58.00	28.90	10.00	0.00	0.40	1302.00	1265.00
04-Dec-13	756.37	4.00	139.10	212.50	3.00	0.00	0.15	96.00	17.10	8.78	31.00	28.90	10.00	0.00	0.40	1319.00	1282.00
07-Jan-14	792.19	4.00	139.10	212.50	3.00	0.00	0.15	96.00	0.00	10.96	31.00	28.90	10.00	0.00	0.40	1357.00	1320.00
04-Feb-14	828.99	4.00	139.10	212.50	3.00	0.00	0.15	96.00	0.00	13.16	31.00	28.90	10.00	0.00	0.40	1396.00	1359.00
04-Mar-14	862.79	4.00	139.10	212.50	3.00	0.00	0.15	96.00	0.00	15.36	31.00	28.90	10.00	0.00	0.40	1432.00	1395.00
08-Apr-14	848.59	4.00	139.10	224.50	0.00	0.00	0.15	104.00	0.00	15.36	31.00	33.10	10.00	0.00	0.40	1439.00	1398.00
06-May-14	842.37	4.00	139.10	224.50	0.00	0.00	0.15	104.00	0.00	6.58	31.00	33.10	10.00	0.00	0.40	1424.00	1383.00
03-Jun-14	826.95	4.00	139.10	224.50	0.00	0.00	0.15	104.00	0.00	0.00	31.00	33.10	10.00	0.00	0.40	1402.00	1361.00
01-Jul-14	857.95	4.00	139.10	224.50	0.00	0.00	0.15	104.00	0.00	0.00	31.00	33.10	10.00	0.00	0.40	1433.00	1392.00
05-Aug-14	853.57	4.00	139.10	224.50	0.00	0.00	0.15	104.00	0.00	4.38	31.00	33.10	10.00	0.00	0.40	1433.00	1392.00
02-Sep-14	786.75	4.00	143.30	224.50	0.00	0.00	0.15	104.00	0.00	0.00	31.00	33.10	10.00	0.00	0.40	1366.00	1325.00



Period	BFP	Custom & Excise duty	Dealers margin	Fuel Levy	Incremental transport recover levy	IP Tracer levy	Petroleum Pipeline levy	RAF levy	Service cost recoveries	Slate levy	Wholesale Margin	Zone differential in Gauteng	DMSL	Equalisation Fund levy	Pump Rounding	Final Pump Price (Inland)	Final Pump Price (Coastal)
07-Oct-14	781.75	4.00	143.30	224.50	0.00	0.00	0.15	104.00	0.00	0.00	31.00	33.10	10.00	0.00	0.40	1361.00	1320.00
04-Nov-14	736.75	4.00	143.30	224.50	0.00	0.00	0.15	104.00	0.00	0.00	31.00	33.10	10.00	0.00	0.40	1316.00	1275.00
02-Dec-14	656.25	4.00	143.30	224.50	0.00	0.00	0.15	104.00	0.00	0.00	33.50	33.10	10.00	0.00	0.40	1206.00	1206.00
07-Jan-15	533.25	4.00	151.10	224.50	0.00	0.00	0.15	104.00	0.00	0.00	33.50	33.10	10.00	0.00	0.40	1124.00	1083.00
04-Feb-15	440.25	4.00	151.10	224.50	0.00	0.00	0.15	104.00	0.00	0.00	33.50	33.10	10.00	0.00	0.40	1031.00	990.00
04-Mar-15	536.25	4.00	151.10	224.50	0.00	0.00	0.15	104.00	0.00	0.00	33.50	33.10	10.00	0.00	0.40	1127.00	1086.00
01-Apr-15	615.65	4.00	151.10	255.00	0.00	0.00	0.15	154.00	0.00	0.00	33.50	35.30	10.00	0.00	0.30	1289.00	1246.00
06-May-15	615.65	4.00	151.10	255.00	0.00	0.00	0.15	154.00	0.00	0.00	33.50	35.30	10.00	0.00	0.30	1289.00	1246.00
03-Jun-15	662.65	4.00	151.10	255.00	0.00	0.00	0.15	154.00	0.00	0.00	33.50	35.30	10.00	0.00	0.30	1336.00	1293.00
01-Jul-15	703.65	4.00	151.10	255.00	0.00	0.00	0.15	154.00	0.00	0.00	33.50	35.30	10.00	0.00	0.30	1377.00	1334.00
05-Aug-15	652.47	4.00	151.10	255.00	0.00	0.00	0.33	154.00	0.00	0.00	33.50	35.30	10.00	0.00	0.30	1326.00	1283.00
02-Sep-15	578.87	4.00	155.70	255.00	0.00	0.00	0.33	154.00	0.00	0.00	33.50	35.30	10.00	0.00	0.30	1257.00	1214.00
07-Oct-15	582.87	4.00	155.70	255.00	0.00	0.00	0.33	154.00	0.00	0.00	33.50	35.30	10.00	0.00	0.30	1261.00	1218.00
04-Nov-15	560.87	4.00	155.70	255.00	0.00	0.00	0.33	154.00	0.00	0.00	33.50	35.30	10.00	0.00	0.30	1239.00	1196.00
02-Dec-15	553.97	4.00	161.70	255.00	0.00	0.00	0.33	154.00	0.00	0.00	33.50	35.30	10.00	0.00	0.30	1240.00	1197.00

Source: Department of Energy

Figure 2-3 Average Annual Contributions of Individual Components for Petrol ULP 95 in cents (2006 - 2015)



Source: Department of Energy



Table 2-5 Average Annual Contributions of Individual Components for Petrol ULP 95 in cents (2006 - 2015)

Period	BFP	Custom & Excise duty	Dealers margin	Fuel Levy	Incremental transport recover levy	IP Tracer levy	Petroleum Pipeline levy	RAF levy	Service cost recoveries	Slate levy	Wholesale Margin	Zone differential in Gauteng	DMSL	Equalisation Fund levy	Pump Rounding	Final Pump Price
2006	286.46	3.33	37.28	96.67	0.00	0.00	0.00	29.58	5.83	5.83	32.73	11.37	8.33	0.00	0.00	518.75
2007	385.33	4.00	51.72	119.75	0.00	0.00	0.17	40.25	7.00	4.84	39.27	13.82	10.00	0.00	0.00	675.00
2008	532.58	3.67	57.66	114.92	0.88	0.00	0.15	41.38	7.67	21.10	38.25	12.94	9.17	0.00	0.00	823.00
2009	386.63	4.00	69.55	144.25	2.38	0.00	0.15	59.63	9.83	0.00	46.22	14.58	10.00	0.00	0.00	739.92
2010	424.18	4.00	74.83	163.13	3.00	0.00	0.15	70.00	10.80	0.00	50.87	15.00	10.00	0.00	0.18	826.25
2011	557.97	4.00	82.75	175.00	3.00	0.00	0.15	78.00	12.20	0.00	53.76	21.05	10.00	0.00	0.35	997.83
2012	660.71	4.00	93.29	192.50	3.00	0.00	0.15	86.00	21.38	6.40	52.96	25.83	10.00	0.00	0.33	1156.33
2013	746.59	4.00	103.34	208.75	3.00	0.00	0.15	94.00	24.80	12.06	55.75	28.38	10.00	0.00	0.38	1283.83
2014	806.24	4.00	140.50	221.50	0.75	0.00	0.15	102.00	0.00	5.48	31.21	32.05	10.00	0.00	0.40	1230.58
2015	586.37	4.00	153.13	247.38	0.00	0.00	0.23	141.50	0.00	0.00	33.50	34.75	10.00	0.00	0.33	1241.33

Source: Department of Energy



3 Diesel Prices

Table 3-1 Monthly Diesel Wholesale Prices in cents per litre (2006-2015)

Period	Diesel 0.05% Sulphur		Diesel 0.005% Sulphur
	Coast	Inland	Inland
04-Jan-06	504.50	517.80	524.20
01-Feb-06	504.50	517.80	524.20
01-Mar-06	504.50	517.80	522.20
05-Apr-06	530.50	544.10	522.20
03-May-06	557.50	571.10	574.50
07-Jun-06	586.50	600.10	606.60
05-Jul-06	618.50	632.10	637.50
02-Aug-06	640.50	654.10	662.50
06-Sep-06	615.50	629.10	596.50
04-Oct-06	581.50	595.10	596.50
01-Nov-06	579.50	593.10	596.50
06-Dec-06	554.50	568.10	596.50
03-Jan-07	537.50	551.10	552.50
07-Feb-07	528.50	542.10	546.50
07-Mar-07	538.50	552.10	554.50
04-Apr-07	576.50	590.10	591.50
02-May-07	606.50	620.30	621.50
06-Jun-07	611.50	625.30	628.70
04-Jul-07	622.50	636.30	639.70
01-Aug-07	637.50	651.30	654.70
05-Sep-07	642.50	656.30	659.70
03-Oct-07	665.50	679.30	682.70
07-Nov-07	659.50	673.30	676.70
05-Dec-07	710.50	724.30	728.70
02-Jan-08	711.50	725.30	728.70
06-Feb-08	718.50	732.30	735.70
05-Mar-08	796.50	810.30	813.70
02-Apr-08	924.50	938.30	943.70
07-May-08	995.50	1009.30	1015.70
04-Jun-08	1066.50	1080.30	1085.70
02-Jul-08	1129.50	1143.30	1154.10
06-Aug-08	1113.50	1127.30	1154.10
03-Sep-08	969.50	983.30	985.70
01-Oct-08	913.50	927.30	909.70
05-Nov-08	889.50	903.30	909.70
03-Dec-08	808.50	822.30	829.70
07-Jan-09	639.65	654.35	663.75
04-Feb-09	634.65	649.35	656.75
04-Mar-09	596.65	611.35	618.75
01-Apr-09	636.15	650.85	658.25
06-May-09	644.15	658.85	664.25
03-Jun-09	632.65	645.95	650.35



Period	Diesel 0.05% Sulphur		Diesel 0.005% Sulphur
	Coast	Inland	Inland
01-Jul-09	672.65	685.95	690.35
05-Aug-09	652.65	665.95	669.35
02-Sep-09	687.65	700.95	705.35
07-Oct-09	655.15	668.45	671.85
04-Nov-09	665.15	678.45	679.85
02-Dec-09	690.15	703.45	705.85
06-Jan-10	676.15	689.45	691.85
03-Feb-10	686.15	699.45	701.85
03-Mar-10	690.15	703.45	705.85
07-Apr-10	738.65	751.95	754.35
05-May-10	767.65	781.45	783.85
02-Jun-10	752.65	766.45	783.85
07-Jul-10	737.65	751.45	783.85
04-Aug-10	724.65	738.45	739.85
01-Sep-10	724.65	738.45	741.85
06-Oct-10	721.65	735.45	738.85
03-Nov-10	732.65	746.45	750.85
01-Dec-10	746.65	760.45	765.85
05-Jan-11	770.25	789.45	789.45
02-Feb-11	800.25	814.05	821.45
02-Mar-11	864.25	878.05	884.45
06-Apr-11	928.05	948.45	953.85
04-May-11	944.05	964.45	969.85
01-Jun-11	906.05	926.45	932.85
06-Jul-11	895.05	915.45	920.85
03-Aug-11	910.05	930.45	935.85
07-Sep-11	910.05	930.45	935.85
05-Oct-11	945.05	965.45	972.85
02-Nov-11	981.05	1001.45	1008.85
07-Dec-11	1028.29	1048.69	1053.09
04-Jan-12	1007.29	1027.69	1033.09
01-Feb-12	1006.29	1026.69	1031.09
07-Mar-12	1016.67	1037.07	1040.47
04-Apr-12	1064.27	1088.97	1094.37
02-May-12	1073.67	1098.37	1102.77
06-Jun-12	1048.85	1073.55	1077.95
04-Jul-12	986.27	1010.97	1016.37
01-Aug-12	1000.89	1025.59	1031.99
05-Sep-12	1069.89	1094.59	1100.99
03-Oct-12	1109.05	1133.75	1141.15
07-Nov-12	1119.25	1143.95	1150.35
05-Dec-12	1114.25	1138.95	1144.35
02-Jan-13	1086.67	1111.37	1115.77
06-Feb-13	1104.47	1129.17	1133.57
06-Mar-13	1162.85	1187.55	1191.95

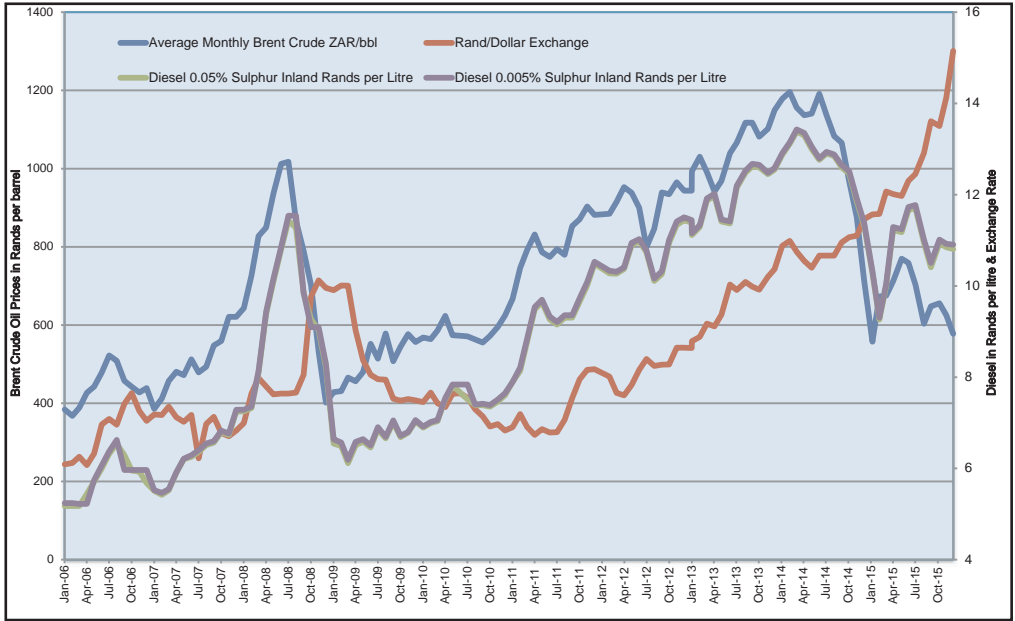


Period	Diesel 0.05% Sulphur		Diesel 0.005% Sulphur
	Coast	Inland	Inland
03-Apr-13	1170.01	1196.61	1202.01
01-May-13	1114.45	1141.05	1145.45
05-Jun-13	1110.47	1137.07	1141.47
03-Jul-13	1188.67	1215.27	1219.67
07-Aug-13	1221.63	1248.23	1252.63
04-Sep-13	1235.45	1262.05	1267.45
02-Oct-13	1233.45	1260.05	1265.45
06-Nov-13	1218.25	1244.85	1248.25
04-Dec-13	1228.37	1254.97	1258.37
07-Jan-14	1260.55	1287.15	1290.55
04-Feb-14	1284.75	1311.35	1314.75
04-Mar-14	1311.95	1338.55	1342.95
08-Apr-14	1299.15	1329.75	1335.15
06-May-14	1269.37	1299.97	1305.37
03-Jun-14	1245.79	1276.39	1279.79
01-Jul-14	1259.79	1290.39	1293.79
05-Aug-14	1254.17	1284.77	1288.17
02-Sep-14	1228.79	1259.39	1264.79
07-Oct-14	1215.79	1246.39	1251.79
04-Nov-14	1154.79	1185.39	1191.79
02-Dec-14	1101.49	1132.09	1137.49
07-Jan-15	997.49	1028.09	1032.49
04-Feb-15	895.49	926.09	930.49
04-Mar-15	969.49	1000.09	1004.49
01-Apr-15	1090.09	1122.79	1129.19
06-May-15	1085.09	1117.79	1124.19
03-Jun-15	1134.09	1166.79	1173.19
01-Jul-15	1138.09	1170.79	1177.19
05-Aug-15	1062.27	1094.97	1101.37
02-Sep-15	1008.27	1040.97	1050.37
07-Oct-15	1061.27	1093.97	1101.37
04-Nov-15	1052.27	1084.97	1092.37
02-Dec-15	1048.47	1081.17	1090.57

Source: Department of Energy



Figure 3-1 Diesel (0.05% & 0.005) Inland Prices, Crude Oil Prices and Rand/Dollar Exchange Rate (2006-2015)



Source: Department of Energy



Table 3-2 Monthly Wholesale 0.05% Diesel Prices Individual Components in cents per litre

Period	BFP	Custom & Excise duty	Fuel levy	Incremental Inland Transport	IP Tracer levy	Petroleum pipeline levy	RAF levy	Service cost recovery	Slate levy	Wholesale margin	Zone differential in Gauteng	Wholesale Price
01Feb-06	307.63	4.00	100.00	0.00	0.01	0.00	31.50	7.00	15.00	39.26	13.40	517.80
01Mar-06	307.63	4.00	100.00	0.00	0.01	0.00	31.50	7.00	15.00	39.26	13.40	517.80
03May-06	369.03	4.00	100.00	0.00	0.01	0.00	36.50	7.00	5.00	39.26	13.70	574.50
07Jun-06	401.03	4.00	100.00	0.00	0.01	0.00	36.50	7.00	5.00	39.26	13.70	606.50
05Jul-06	432.03	4.00	100.00	0.00	0.01	0.00	36.50	7.00	5.00	39.26	13.70	637.50
02Aug-06	457.03	4.00	100.00	0.00	0.01	0.00	36.50	7.00	5.00	39.26	13.70	662.50
06Sep-06	457.03	4.00	100.00	0.00	0.01	0.00	36.50	7.00	5.00	39.26	13.70	662.50
04Oct-06	391.03	4.00	100.00	0.00	0.01	0.00	36.50	7.00	5.00	39.26	13.70	596.50
01Nov-06	390.03	4.00	100.00	0.00	0.01	0.00	36.50	7.00	5.00	39.26	13.70	595.50
06Dec-06	364.03	4.00	100.00	0.00	0.01	0.00	36.50	7.00	5.00	39.26	13.70	569.50
03Jan-07	345.63	4.00	100.00	0.00	0.01	0.00	36.50	7.00	5.00	39.26	13.70	551.10
07Feb-07	336.63	4.00	100.00	0.00	0.01	0.00	36.50	7.00	5.00	39.26	13.70	542.10
07Mar-07	346.63	4.00	100.00	0.00	0.01	0.19	36.50	7.00	4.81	39.26	13.70	552.10
04Apr-07	374.63	4.00	105.00	0.00	0.01	0.19	41.50	7.00	4.81	39.26	13.70	590.10
02May-07	404.63	4.00	105.00	0.00	0.01	0.19	41.50	7.00	4.81	39.26	13.70	620.10
06Jun-07	409.63	4.00	105.00	0.00	0.01	0.19	41.50	7.00	4.81	39.26	13.90	625.30
04Jul-07	420.63	4.00	105.00	0.00	0.01	0.19	41.50	7.00	4.81	39.26	13.90	636.30
05Sep-07	440.63	4.00	105.00	0.00	0.01	0.19	41.50	7.00	4.81	39.26	13.90	656.30
03Oct-07	463.63	4.00	105.00	0.00	0.01	0.19	41.50	7.00	4.81	39.26	13.90	679.30
07Nov-07	457.63	4.00	105.00	0.00	0.01	0.19	41.50	7.00	4.81	39.26	13.90	673.30
05Dec-07	508.63	4.00	105.00	0.00	0.01	0.19	41.50	7.00	4.81	39.26	13.90	724.30
02Jan-08	509.63	4.00	105.00	0.00	0.01	0.19	41.50	7.00	4.81	39.26	13.90	725.30
06Feb-08	516.63	4.00	105.00	0.00	0.01	0.19	41.50	7.00	4.81	39.26	13.90	732.30
05Mar-08	594.63	4.00	105.00	0.00	0.01	0.19	41.50	7.00	4.81	39.26	13.90	810.30
02Apr-08	711.63	4.00	111.00	0.00	0.01	0.15	46.50	7.00	4.85	39.26	13.90	938.30
07May-08	758.63	4.00	111.00	1.50	0.01	0.15	46.50	9.50	24.85	39.26	13.90	1009.30
04Jun-08	829.63	4.00	111.00	1.50	0.01	0.15	46.50	9.50	24.85	39.26	13.90	1080.30



Period	BFP	Custom & Excise duty	Fuel levy	Incremental Inland Transport	IP Tracer levy	Petroleum pipeline levy	RAF levy	Service cost recovery	Slate levy	Wholesale margin	Zone differential in Gauteng	Wholesale Price
02Jul-08	892.63	4.00	111.00	1.50	0.01	0.15	46.50	9.50	24.85	44.66	13.90	1148.70
06Aug-08	870.63	4.00	111.00	1.50	0.01	0.15	46.50	9.50	24.85	44.66	14.50	1127.30
03Sep-08	706.63	4.00	111.00	1.50	0.01	0.15	46.50	9.50	44.85	44.66	14.50	983.30
05Nov-08	626.63	4.00	111.00	1.50	0.01	0.15	46.50	9.50	44.85	44.66	14.50	903.30
03Dec-08	545.63	4.00	111.00	1.50	0.01	0.15	46.50	9.50	44.85	44.66	14.50	822.30
02Jan-09	421.63	4.00	111.00	1.50	0.01	0.15	46.50	9.50	0.00	44.66	15.40	654.35
04Feb-09	416.63	4.00	111.00	1.50	0.01	0.15	46.50	9.50	0.00	44.66	15.40	649.35
04Mar09	378.63	4.00	111.00	1.50	0.01	0.15	46.50	9.50	0.00	44.66	15.40	611.35
01Apr09	376.63	4.00	135.00	1.50	0.01	0.15	64.00	9.50	0.00	44.66	15.40	650.85
06May-09	384.63	4.00	135.00	1.50	0.01	0.15	64.00	9.50	0.00	44.66	15.40	658.85
03Jun-09	371.63	4.00	135.00	3.00	0.01	0.15	64.00	9.50	0.00	44.66	14.00	645.95
01Jul-09	411.63	4.00	135.00	3.00	0.01	0.15	64.00	9.50	0.00	44.66	14.00	685.95
05Aug-09	391.63	4.00	135.00	3.00	0.01	0.15	64.00	9.50	0.00	44.66	14.00	665.95
02Sep-09	426.63	4.00	135.00	3.00	0.01	0.15	64.00	9.50	0.00	44.66	14.00	700.95
07Oct-09	386.63	4.00	135.00	3.00	0.01	0.15	64.00	10.80	0.00	50.86	14.00	668.45
07Nov-09	396.63	4.00	135.00	3.00	0.01	0.15	64.00	10.80	0.00	50.86	14.00	678.45
02Dec-09	421.63	4.00	135.00	3.00	0.01	0.15	64.00	10.80	0.00	50.86	14.00	703.45
06Jan-10	407.63	4.00	135.00	3.00	0.01	0.15	64.00	10.80	0.00	50.86	14.00	689.45
03Feb-10	417.63	4.00	135.00	3.00	0.01	0.15	64.00	10.80	0.00	50.86	14.00	699.45
03Mar10	421.63	4.00	135.00	3.00	0.01	0.15	64.00	10.80	0.00	50.86	14.00	703.45
07Apr10	444.63	4.00	152.50	3.00	0.01	0.15	72.00	10.80	0.00	50.86	14.00	751.95
05May-10	472.63	4.00	152.50	3.00	0.01	0.15	72.00	10.80	0.00	50.86	15.50	781.45
02Jun-10	457.63	4.00	152.50	3.00	0.01	0.15	72.00	10.80	0.00	50.86	15.50	766.54
07Jul-10	442.63	4.00	152.50	3.00	0.01	0.15	72.00	10.80	0.00	50.86	15.50	751.45
04Aug-10	429.63	4.00	152.50	3.00	0.01	0.15	72.00	10.80	0.00	50.86	15.50	738.45
01Sep-10	429.63	4.00	152.50	3.00	0.01	0.15	72.00	10.80	0.00	50.86	15.50	738.45
06Oct-10	426.63	4.00	152.50	3.00	0.01	0.15	72.00	10.80	0.00	50.86	15.50	735.45
03Nov-10	437.63	4.00	152.50	3.00	0.01	0.15	72.00	10.80	0.00	50.86	15.50	746.45



Period	BFP	Custom & Excise duty	Fuel levy	Incremental Inland Transport	IP Tracer levy	Petroleum pipeline levy	RAF levy	Service cost recovery	Slate levy	Wholesale margin	Zone differential in Gauteng	Wholesale Price
01-Dec-10	451.63	4.00	152.50	3.00	0.05	0.15	72.00	10.80	0.00	50.86	15.50	760.45
05-Jan-11	471.63	4.00	152.50	3.00	0.01	0.15	72.00	11.40	0.00	53.86	15.50	784.05
02-Feb-11	501.63	4.00	152.50	3.00	0.01	0.15	72.00	11.40	0.00	53.86	15.50	814.05
02-Mar-11	565.63	4.00	152.50	3.00	0.01	0.15	72.00	11.40	0.00	53.86	15.50	878.05
06-Apr-11	610.63	4.00	162.50	3.00	0.01	0.15	80.00	11.40	0.00	53.86	22.90	948.45
04-May-11	626.63	4.00	162.50	3.00	0.01	0.15	80.00	11.40	0.00	53.86	22.90	964.45
01-Jun-11	588.63	4.00	162.50	3.00	0.01	0.15	80.00	11.40	0.00	53.86	22.90	926.45
06-Jul-11	577.63	4.00	162.50	3.00	0.01	0.15	80.00	11.40	0.00	53.86	22.90	915.45
03-Aug-11	592.63	4.00	162.50	3.00	0.01	0.15	80.00	11.40	0.00	53.86	22.90	930.45
07-Sep-11	592.63	4.00	162.50	3.00	0.01	0.15	80.00	11.40	0.00	53.86	22.90	930.45
05-Oct-11	627.63	4.00	162.50	3.00	0.01	0.15	80.00	11.40	0.00	53.86	22.90	965.45
02-Nov-11	663.63	4.00	162.50	3.00	0.01	0.15	80.00	11.40	0.00	53.86	22.90	1001.45
07-Dec-11	702.63	4.00	162.50	3.00	0.01	0.15	80.00	21.00	0.00	52.50	22.90	1048.69
04-Jan-12	681.63	4.00	162.50	3.00	0.01	0.15	80.00	21.00	0.00	52.50	22.90	1027.69
01-Feb-12	680.63	4.00	162.50	3.00	0.01	0.15	80.00	21.00	0.00	52.50	22.90	1026.69
07-Mar-12	686.63	4.00	162.50	3.00	0.01	0.15	80.00	21.00	4.38	52.50	22.90	1037.07
04-Apr-12	706.63	4.00	182.50	3.00	0.01	0.15	88.00	21.00	4.38	52.50	26.80	1088.97
02-May-12	711.63	4.00	182.50	3.00	0.01	0.15	88.00	21.00	8.78	52.50	26.80	1098.37
06-Jun-12	684.63	4.00	182.50	3.00	0.01	0.15	88.00	21.00	10.96	52.50	26.80	1073.55
04-Jul-12	628.63	4.00	182.50	3.00	0.01	0.15	88.00	21.00	4.38	52.50	26.80	1010.97
01-Aug-12	647.63	4.00	182.50	3.00	0.01	0.15	88.00	21.00	0.00	52.50	26.80	1025.59
05-Sep-12	716.63	4.00	182.50	3.00	0.01	0.15	88.00	21.00	0.00	52.50	26.80	1094.59
03-Oct-12	742.63	4.00	182.50	3.00	0.01	0.15	88.00	21.00	13.16	52.50	26.80	1133.75
07-Nov-12	750.63	4.00	182.50	3.00	0.01	0.15	88.00	21.00	15.36	52.50	26.80	1143.95
05-Dec-12	735.63	4.00	182.50	3.00	0.01	0.15	88.00	25.50	15.36	58.00	26.80	1138.95
02-Jan-13	714.63	4.00	182.50	3.00	0.01	0.15	88.00	25.50	8.78	58.00	26.80	1111.37
01-Feb-13	734.63	4.00	182.50	3.00	0.01	0.15	88.00	25.50	6.58	58.00	26.80	1129.17
06-Mar-13	788.63	4.00	182.50	3.00	0.01	0.15	88.00	25.50	10.96	58.00	26.80	1187.55



Period	BFP	Custom & Excise duty	Fuel levy	Incremental Inland Transport	IP Tracer levy	Petroleum pipeline levy	RAF levy	Service cost recovery	Slate levy	Wholesale margin	Zone differential in Gauteng	Wholesale Price
03-Apr-13	761.63	4.00	197.50	3.00	0.01	0.15	96.00	25.50	21.92	58.00	28.90	1196.61
01-May-13	712.63	4.00	197.50	3.00	0.01	0.15	96.00	25.50	15.36	58.00	28.90	1141.05
05-Jun-13	719.63	4.00	197.50	3.00	0.01	0.15	96.00	25.50	4.38	58.00	28.90	1137.07
03-Jul-13	795.63	4.00	197.50	3.00	0.01	0.15	96.00	25.50	6.58	58.00	28.90	1215.27
07-Aug-13	817.63	4.00	197.50	3.00	0.01	0.15	96.00	25.50	17.54	58.00	28.90	1248.23
04-Sep-13	833.63	4.00	197.50	3.00	0.01	0.15	96.00	25.50	15.36	58.00	28.90	1262.05
02-Oct-13	831.63	4.00	197.50	3.00	0.01	0.15	96.00	25.50	15.36	58.00	28.90	1260.05
06-Nov-13	818.63	4.00	197.50	3.00	0.01	0.15	96.00	25.50	13.16	58.00	28.90	1244.85
04-Dec-13	826.63	4.00	197.50	3.00	0.01	0.15	96.00	17.10	8.78	61.20	28.90	1254.97
07-Jan-14	856.63	4.00	197.50	3.00	0.01	0.15	96.00	17.10	10.96	61.20	28.90	1287.15
04-Feb-14	878.63	4.00	197.50	3.00	0.01	0.15	96.00	17.10	13.16	61.20	28.90	1311.35
04-Mar-14	903.63	4.00	197.50	3.00	0.01	0.15	96.00	17.10	15.36	61.20	28.90	1338.55
08-Apr-14	873.63	4.00	209.50	0.00	0.01	0.15	104.00	17.10	15.36	61.20	33.10	1329.75
06-May-14	852.63	4.00	209.50	0.00	0.01	0.15	104.00	17.10	6.58	61.20	33.10	1299.97
03-Jun-14	835.63	4.00	209.50	0.00	0.01	0.15	104.00	17.10	0.00	61.20	33.10	1276.39
01-Jul-14	849.63	4.00	209.50	0.00	0.01	0.15	104.00	17.10	0.00	61.20	33.10	1290.99
05-Aug-14	839.63	4.00	209.50	0.00	0.01	0.15	104.00	17.10	4.38	61.20	33.10	1284.77
02-Sep-14	824.03	4.00	209.50	0.00	0.01	0.15	104.00	17.10	0.00	61.20	33.10	1259.39
07-Oct-14	805.63	4.00	209.50	0.00	0.01	0.15	104.00	17.10	0.00	61.20	33.10	1246.39
04-Nov-14	744.63	4.00	209.50	0.00	0.01	0.15	104.00	17.10	0.00	61.20	33.10	1185.39
02-Dec-14	686.63	4.00	209.50	0.00	0.01	0.15	104.00	17.10	0.00	61.20	33.10	1132.09
07-Jan-15	582.63	4.00	209.50	0.00	0.01	0.15	104.00	17.40	0.00	64.70	33.10	1028.09
04-Feb-15	480.63	4.00	209.50	0.00	0.01	0.15	104.00	17.40	0.00	64.70	33.10	926.09
04-Mar-15	554.63	4.00	209.50	0.00	0.01	0.15	104.00	17.40	0.00	64.70	33.10	1000.09
01-Apr-15	594.63	4.00	240.00	0.00	0.01	0.15	154.00	17.40	0.00	64.70	35.30	1122.79
06-May-15	589.63	4.00	240.00	0.00	0.01	0.15	154.00	17.40	0.00	64.70	35.30	1117.79
03-Jun-15	638.63	4.00	240.00	0.00	0.01	0.15	154.00	17.40	0.00	64.70	35.30	1166.79
01-Jul-15	642.63	4.00	240.00	0.00	0.01	0.15	154.00	17.40	0.00	64.70	35.30	1170.79

Period	BFP	Custom & Excise duty	Fuel levy	Incremental Inland Transport	IP Tracer levy	Petroleum pipeline levy	RAF levy	Service cost recovery	Slate levy	Wholesale margin	Zone differential in Gauteng	Wholesale Price
05-Aug-15	566.63	4.00	240.00	0.00	0.01	0.33	154.00	17.40	0.00	64.70	35.30	1094.97
02-Sep-15	528.33	4.00	240.00	0.00	0.01	0.33	154.00	17.40	0.00	64.70	35.30	1040.97
07-Oct-15	565.63	4.00	240.00	0.00	0.01	0.33	154.00	17.40	0.00	64.70	35.30	1093.97
04-Nov-15	556.63	4.00	240.00	0.00	0.01	0.33	154.00	17.40	0.00	64.70	35.30	1084.97
02-Dec-15	558.03	4.00	240.00	0.00	0.01	0.33	154.00	17.40	0.00	64.70	35.30	1081.17

Source: Department of Energy



Table 3-3 Monthly Wholesale 0.005% Diesel Prices Individual Components in cents per litre

Period	BFP	Custom & Excise duty	Fuel levy	Incremental Inland Transport	IP Tracer levy	Petroleum pipeline levy	RAF levy	Service cost recovery	Slate levy	Wholesale margin	Zone differential in Gauteng	Wholesale Price
01-Feb-06	314.03	4.00	100.00	0.00	0.01	0.00	31.50	7.00	15.00	39.26	13.40	524.20
01-Mar-06	312.03	4.00	100.00	0.00	0.01	0.00	31.50	7.00	15.00	39.26	13.40	522.20
03-May-06	369.30	4.00	100.00	0.00	0.01	0.00	36.50	7.00	5.00	39.26	13.70	574.77
07-Jun-06	401.03	4.00	100.00	0.00	0.01	0.00	36.50	7.00	5.00	39.26	13.70	606.50
05-Jul-06	432.30	4.00	100.00	0.00	0.01	0.00	36.50	7.00	5.00	39.26	13.70	637.77
02-Aug-06	457.13	4.00	100.00	0.00	0.01	0.00	36.50	7.00	5.00	39.26	13.70	662.60
06-Sep-06	427.13	4.00	100.00	0.00	0.01	0.00	36.50	7.00	5.00	39.26	13.70	632.60
04-Oct-06	391.30	4.00	100.00	0.00	0.01	0.00	36.50	7.00	5.00	39.26	13.70	596.77
01-Nov-06	390.03	4.00	100.00	0.00	0.01	0.00	36.50	7.00	5.00	39.26	13.70	595.50
06-Dec-06	364.03	4.00	100.00	0.00	0.01	0.00	36.50	7.00	5.00	39.26	13.70	569.50
02-Jan-07	347.03	4.00	100.00	0.00	0.01	0.00	36.50	7.00	4.81	39.26	13.70	552.31
07-Feb-07	341.03	4.00	100.00	0.00	0.01	0.00	36.50	7.00	4.81	39.26	13.70	546.31
07-Mar-07	349.03	4.00	100.00	0.00	0.01	0.19	36.50	7.00	4.81	39.26	13.70	554.50
04-Apr-07	376.03	4.00	105.00	0.00	0.01	0.19	41.50	7.00	4.81	39.26	13.70	591.50
02-May-07	406.03	4.00	105.00	0.00	0.01	0.19	41.50	7.00	4.81	39.26	13.70	621.50
06-Jun-07	413.03	4.00	105.00	0.00	0.01	0.19	41.50	7.00	4.81	39.26	13.90	628.70
04-Jul-07	424.03	4.00	105.00	0.00	0.01	0.19	41.50	7.00	4.81	39.26	13.90	639.70
01-Aug-07	439.03	4.00	105.00	0.00	0.01	0.19	41.50	7.00	4.81	39.26	13.90	654.70
05-Sep-07	444.03	4.00	105.00	0.00	0.01	0.19	41.50	7.00	4.81	39.26	13.90	659.70
03-Oct-07	467.03	4.00	105.00	0.00	0.01	0.19	41.50	7.00	4.81	39.26	13.90	682.70
07-Nov-07	461.03	4.00	105.00	0.00	0.01	0.19	41.50	7.00	4.81	39.26	13.90	676.70
05-Dec-07	513.03	4.00	105.00	0.00	0.01	0.19	41.50	7.00	4.81	39.26	13.90	728.70
02-Jan-08	513.03	4.00	105.00	0.00	0.01	0.19	41.50	7.00	4.81	39.26	13.90	728.70
06-Feb-08	520.03	4.00	105.00	0.00	0.01	0.19	41.50	7.00	4.81	39.26	13.90	735.70
05-Mar-08	598.03	4.00	105.00	0.00	0.01	0.19	41.50	7.00	4.81	39.26	13.90	813.70
02-Apr-08	717.03	4.00	111.00	0.00	0.01	0.15	46.50	7.00	4.85	39.26	13.90	943.70
07-May-08	765.03	4.00	111.00	1.50	0.01	0.15	46.50	9.50	24.85	39.26	13.90	1015.70



Period	BFP	Custom & Excise duty	Fuel levy	Incremental Inland Transport	IP Tracer levy	Petroleum pipeline levy	RAF levy	Service cost recovery	Slate levy	Wholesale margin	Zone differential in Gauteng	Wholesale Price
04-Jun-08	835.03	4.00	111.00	1.50	0.01	0.15	46.50	9.50	24.85	39.26	13.90	1085.70
02-Jul-08	898.03	4.00	111.00	1.50	0.01	0.15	46.50	9.50	24.85	44.66	13.90	1154.10
06-Aug-08	875.03	4.00	111.00	1.50	0.01	0.15	46.50	9.50	24.85	44.66	14.50	1131.70
03-Sep-08	709.03	4.00	111.00	1.50	0.01	0.15	46.50	9.50	24.85	44.66	14.50	965.70
05-Nov-08	633.03	4.00	111.00	1.50	0.01	0.15	46.50	9.50	44.85	44.66	14.50	909.70
03-Dec-08	553.03	4.00	111.00	1.50	0.01	0.15	46.50	9.50	44.85	44.66	14.50	829.70
02-Jan-09	431.03	4.00	111.00	1.50	0.01	0.15	46.50	9.50	0.00	44.66	15.40	663.75
04-Feb-09	424.03	4.00	111.00	1.50	0.01	0.15	46.50	9.50	0.00	44.66	15.40	656.75
04-Mar-09	386.03	4.00	111.00	1.50	0.01	0.15	46.50	9.50	0.00	44.66	15.40	618.75
01-Apr-09	384.03	4.00	135.00	1.50	0.01	0.15	64.00	9.50	0.00	44.66	15.40	658.25
06-May-09	390.03	4.00	135.00	1.50	0.01	0.15	64.00	9.50	0.00	44.66	15.40	664.25
03-Jun-09	376.03	4.00	135.00	3.00	0.01	0.15	64.00	9.50	0.00	44.66	14.00	650.35
01-Jul-09	416.03	4.00	135.00	3.00	0.01	0.15	64.00	9.50	0.00	44.66	14.00	690.35
05-Aug-09	395.03	4.00	135.00	3.00	0.01	0.15	64.00	9.50	0.00	44.66	14.00	669.35
02-Sep-09	431.03	4.00	135.00	3.00	0.01	0.15	64.00	9.50	0.00	44.66	14.00	705.35
07-Oct-09	390.03	4.00	135.00	3.00	0.01	0.15	64.00	10.80	0.00	50.86	14.00	671.85
07-Nov-09	398.03	4.00	135.00	3.00	0.01	0.15	64.00	10.80	0.00	50.86	14.00	679.85
02-Dec-09	424.03	4.00	135.00	3.00	0.01	0.15	64.00	10.80	0.00	50.86	14.00	705.85
06-Jan-10	410.03	4.00	135.00	3.00	0.01	0.15	64.00	10.80	0.00	50.86	14.00	691.85
03-Feb-10	420.03	4.00	135.00	3.00	0.01	0.15	64.00	10.80	0.00	50.86	14.00	701.85
03-Mar-10	420.03	4.00	135.00	3.00	0.01	0.15	64.00	10.80	0.00	50.86	14.00	701.85
07-Apr-10	447.03	4.00	152.50	3.00	0.01	0.15	72.00	10.80	0.00	50.86	14.00	754.35
05-May-10	475.03	4.00	152.50	3.00	0.01	0.15	72.00	10.80	0.00	50.86	15.50	783.85
02-Jun-10	460.03	4.00	152.50	3.00	0.01	0.15	72.00	10.80	0.00	50.86	15.50	768.85
07-Jul-10	444.03	4.00	152.50	3.00	0.01	0.15	72.00	10.80	0.00	50.86	15.50	752.85
04-Aug-10	413.03	4.00	152.50	3.00	0.01	0.15	72.00	10.80	0.00	50.86	15.50	739.85
01-Sep-10	433.03	4.00	152.50	3.00	0.01	0.15	72.00	10.80	0.00	50.86	15.50	741.85
06-Oct-10	430.03	4.00	152.50	3.00	0.01	0.15	72.00	10.80	0.00	50.86	15.50	738.85



Period	BFP	Custom & Excise duty	Fuel levy	Incremental Inland Transport	IP Tracer levy	Petroleum pipeline levy	RAF levy	Service cost recovery	Slate levy	Wholesale margin	Zone differential in Gauteng	Wholesale Price
03-Nov-10	442.03	4.00	152.50	3.00	0.01	0.15	72.00	10.80	0.00	50.86	15.50	750.85
01-Dec-10	457.03	4.00	152.50	3.00	0.01	0.15	72.00	10.80	0.00	50.86	15.50	765.85
05-Jan-11	477.03	4.00	152.50	3.00	0.01	0.15	72.00	11.40	0.00	53.86	15.50	789.45
02-Feb-11	509.03	4.00	152.50	3.00	0.01	0.15	72.00	11.40	0.00	53.86	15.50	821.45
02-Mar-11	572.03	4.00	152.50	3.00	0.01	0.15	72.00	11.40	0.00	53.86	15.50	884.45
06-Apr-11	616.03	4.00	162.50	3.00	0.01	0.15	80.00	11.40	0.00	53.86	22.90	953.85
04-May-11	632.03	4.00	162.50	3.00	0.01	0.15	80.00	11.40	0.00	53.86	22.90	969.85
01-Jun-11	595.03	4.00	162.50	3.00	0.01	0.15	80.00	11.40	0.00	53.86	22.90	932.85
06-Jul-11	583.03	4.00	162.50	3.00	0.01	0.29	80.00	11.40	0.00	53.86	22.90	920.85
03-Aug-11	598.03	4.00	162.50	3.00	0.01	0.29	80.00	11.40	0.00	53.86	22.90	935.85
07-Sep-11	598.03	4.00	162.50	3.00	0.01	0.15	80.00	11.40	0.00	53.86	22.90	935.85
05-Oct-11	635.03	4.00	162.50	3.00	0.01	0.15	80.00	11.40	0.00	53.86	22.90	972.85
02-Nov-11	671.03	4.00	162.50	3.00	0.01	0.15	80.00	11.40	0.00	53.86	22.90	1008.85
07-Dec-11	707.03	4.00	162.50	3.00	0.01	0.15	80.00	21.00	0.00	52.50	22.90	1053.09
04-Jan-12	687.03	4.00	162.50	3.00	0.01	0.15	80.00	21.00	0.00	52.50	22.90	1033.09
01-Feb-12	685.03	4.00	162.50	3.00	0.01	0.15	80.00	21.00	0.00	52.50	22.90	1031.09
07-Mar-12	690.03	4.00	162.50	3.00	0.01	0.15	80.00	21.00	4.38	52.50	22.90	1040.47
04-Apr-12	712.03	4.00	182.50	3.00	0.01	0.15	88.00	21.00	4.38	52.50	26.80	1094.37
02-May-12	716.03	4.00	182.50	3.00	0.01	0.15	88.00	21.00	8.78	52.50	26.80	1102.77
06-Jun-12	689.03	4.00	182.50	3.00	0.01	0.15	88.00	21.00	10.96	52.50	26.80	1077.95
04-Jul-12	634.03	4.00	182.50	3.00	0.01	0.15	88.00	21.00	4.38	52.50	26.80	1016.37
01-Aug-12	654.03	4.00	182.50	3.00	0.01	0.15	88.00	21.00	0.00	52.50	26.80	1031.99
05-Sep-12	723.03	4.00	182.50	3.00	0.01	0.15	88.00	21.00	0.00	52.50	26.80	1100.99
03-Oct-12	750.03	4.00	182.50	3.00	0.01	0.15	88.00	21.00	13.16	52.50	26.80	1141.15
07-Nov-12	757.03	4.00	182.50	3.00	0.01	0.15	88.00	21.00	15.36	52.50	26.80	1150.35
05-Dec-12	741.03	4.00	182.50	3.00	0.01	0.15	88.00	25.50	15.36	58.00	26.80	1144.35
02-Jan-13	719.03	4.00	182.50	3.00	0.01	0.15	88.00	25.50	8.78	58.00	26.80	1115.77
01-Feb-13	739.03	4.00	182.50	3.00	0.01	0.15	88.00	25.50	6.58	58.00	26.80	1133.57



Period	BFP	Custom & Excise duty	Fuel levy	Incremental Inland Transport	IP Tracer levy	Petroleum pipeline levy	RAF levy	Service cost recovery	Slate levy	Wholesale margin	Zone differential in Gauteng	Wholesale Price
06-Mar-13	793.03	4.00	182.50	3.00	0.01	0.15	88.00	25.50	10.96	58.00	26.80	1191.95
03-Apr-13	767.03	4.00	197.50	3.00	0.01	0.15	96.00	25.50	21.92	58.00	28.90	1202.01
01-May-13	717.03	4.00	197.50	3.00	0.01	0.15	96.00	25.50	15.36	58.00	28.90	1145.45
05-Jun-13	724.03	4.00	197.50	3.00	0.01	0.15	96.00	25.50	4.38	58.00	28.90	1141.47
03-Jul-13	800.03	4.00	197.50	3.00	0.01	0.15	96.00	25.50	6.58	58.00	28.90	1219.67
07-Aug-13	822.03	4.00	197.50	3.00	0.01	0.15	96.00	25.50	17.54	58.00	28.90	1252.63
04-Sep-13	839.03	4.00	197.50	3.00	0.01	0.15	96.00	25.50	15.36	58.00	28.90	1267.45
02-Oct-13	837.03	4.00	197.50	3.00	0.01	0.15	96.00	25.50	15.36	58.00	28.90	1265.45
06-Nov-13	822.03	4.00	197.50	3.00	0.01	0.15	96.00	25.50	13.16	58.00	28.90	1248.25
04-Dec-13	830.03	4.00	197.50	3.00	0.01	0.15	96.00	17.10	8.78	61.20	28.90	1258.37
07-Jan-14	860.03	4.00	197.50	3.00	0.01	0.15	96.00	17.10	10.96	61.20	28.90	1290.55
04-Feb-14	882.03	4.00	197.50	3.00	0.01	0.15	96.00	17.10	13.16	61.20	28.90	1314.75
04-Mar-14	908.03	4.00	197.50	3.00	0.01	0.15	96.00	17.10	15.36	61.20	28.90	1342.95
08-Apr-14	879.03	4.00	209.50	0.00	0.01	0.15	104.00	17.10	15.36	61.20	28.90	1335.15
06-May-14	858.03	4.00	209.50	0.00	0.01	0.15	104.00	17.10	6.58	61.20	28.90	1305.37
03-Jun-14	839.03	4.00	209.50	0.00	0.01	0.15	104.00	17.10	0.00	61.20	28.90	1279.79
01-Jul-14	853.03	4.00	209.50	0.00	0.01	0.15	104.00	17.10	0.00	61.20	28.90	1293.79
05-Aug-14	844.03	4.00	209.50	0.00	0.01	0.15	104.00	17.10	4.38	61.20	28.90	1288.17
02-Sep-14	824.03	4.00	209.50	0.00	0.01	0.15	104.00	17.10	0.00	61.20	28.90	1264.79
07-Oct-14	811.03	4.00	209.50	0.00	0.01	0.15	104.00	17.10	0.00	61.20	28.90	1251.79
04-Nov-14	751.03	4.00	209.50	0.00	0.01	0.15	104.00	17.10	0.00	61.20	28.90	1191.79
02-Dec-14	692.03	4.00	209.50	0.00	0.01	0.15	104.00	17.10	0.00	61.20	28.90	1137.49
07-Jan-15	582.63	4.00	209.50	0.00	0.01	0.15	104.00	17.40	0.00	64.70	0.00	1032.49
04-Feb-15	480.63	4.00	209.50	0.00	0.01	0.15	104.00	17.40	0.00	64.70	0.00	930.49
04-Mar-15	554.63	4.00	209.50	0.00	0.01	0.15	104.00	17.40	0.00	64.70	0.00	1004.49
01-Apr-15	594.63	4.00	240.00	0.00	0.01	0.15	154.00	17.40	0.00	64.70	0.00	1129.19
06-May-15	589.63	4.00	240.00	0.00	0.01	0.15	154.00	17.40	0.00	64.70	0.00	1124.19
03-Jun-15	638.63	4.00	240.00	0.00	0.01	0.15	154.00	17.40	0.00	64.70	0.00	1173.19

Period	BFP	Custom & Excise duty	Fuel levy	Incremental Inland Transport	IP Tracer levy	Petroleum pipeline levy	RAF levy	Service cost recovery	Slate levy	Wholesale margin	Zone differential in Gauteng	Wholesale Price
01-Jul-15	642.63	4.00	240.00	0.00	0.01	0.15	154.00	17.40	0.00	64.70	0.00	1177.19
05-Aug-15	566.63	4.00	240.00	0.00	0.01	0.33	154.00	17.40	0.00	64.70	0.00	1101.37
02-Sep-15	528.33	4.00	240.00	0.00	0.01	0.33	154.00	17.40	0.00	64.70	0.00	1050.37
07-Oct-15	565.63	4.00	240.00	0.00	0.01	0.33	154.00	17.40	0.00	64.70	0.00	1101.37
04-Nov-15	556.63	4.00	240.00	0.00	0.01	0.33	154.00	17.40	0.00	64.70	0.00	1092.37
02-Dec-15	550.63	4.00	240.00	0.00	0.01	0.33	154.00	17.40	0.00	64.70	0.00	1090.57

Source: Department of Energy

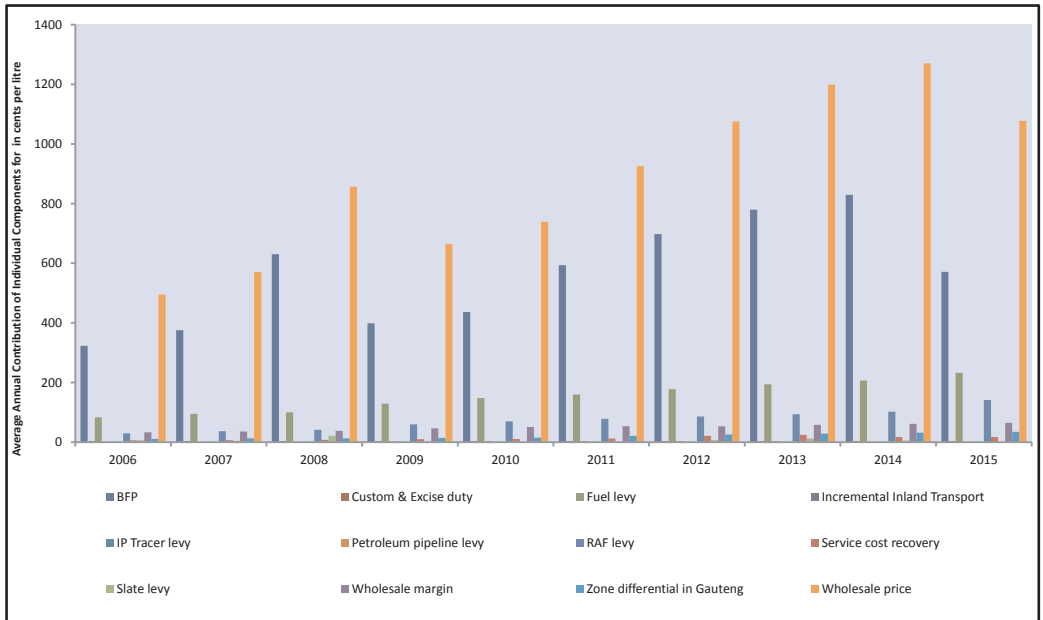


Table 3-4 Annual Contribution of Individual Components for Diesel 0.05% in cents litre (2006-2015)

Period	BFP	Custom & Excise duty	Fuel levy	Incremental Inland Transport	IP Tracer levy	Petroleum pipeline levy	RAF levy	Service cost recovery	Slate levy	Wholesale margin	Zone differential in Gauteng	Wholesale price
2006	323.04	3.33	83.33	0.00	0.01	0.00	29.58	5.83	5.83	32.72	11.37	495.05
2007	375.74	3.67	95.00	0.00	0.01	0.14	36.79	6.42	4.44	35.99	12.66	570.86
2008	630.24	3.67	100.25	0.88	0.01	0.15	41.38	7.88	21.10	38.24	12.94	856.73
2009	398.71	4.00	129.00	2.38	0.01	0.15	59.63	9.83	0.00	46.21	14.58	664.49
2010	436.63	4.00	148.13	3.00	0.01	0.15	70.00	10.80	0.00	50.86	15.00	738.58
2011	593.46	4.00	160.00	3.00	0.01	0.15	78.00	12.20	0.00	53.75	21.05	925.62
2012	697.80	4.00	177.50	3.00	0.01	0.15	86.00	21.38	6.40	52.96	25.83	1075.01
2013	779.63	4.00	193.75	3.00	0.01	0.15	94.00	24.80	12.06	58.27	28.38	1199.02
2014	829.25	4.00	206.50	0.75	0.01	0.15	102.00	17.10	5.48	61.20	32.05	1270.13
2015	570.94	4.00	232.38	0.00	0.01	0.23	141.50	17.40	0.00	64.70	34.75	1077.37

Source: Department of Energy

Figure 3-2 Annual Contribution of Individual Components for Diesel 0.05% in cents per litre (2006-2015)



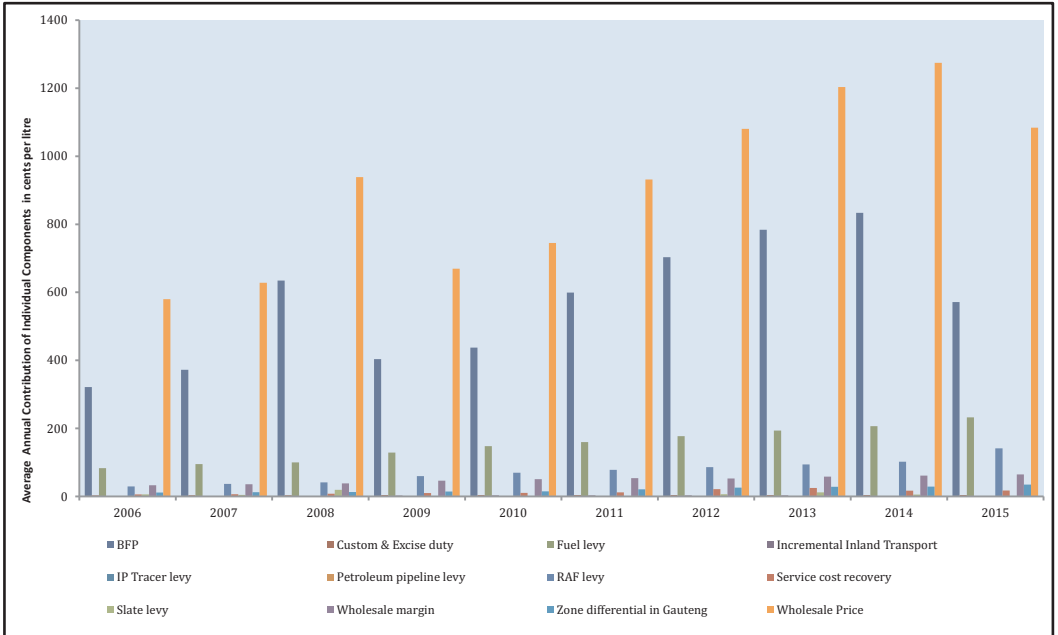
Source: Department of Energy



Table 3-5 Annual Contributions of Individual Components for Diesel 0.005% in cents (2006-2015)

Period	BFP	Custom & Excise duty	Fuel levy	Incremental Inland Transport	IP Tracer levy	Petroleum pipeline levy	RAF levy	Service cost recovery	Slate levy	Wholesale margin	Zone differential in Gauteng	Wholesale Price
2006	321.53	3.33	83.33	0.00	0.01	0.00	29.58	5.83	5.83	32.72	11.37	579.99
2007	372.28	3.67	95.00	0.00	0.01	0.14	36.79	6.42	4.41	35.99	12.66	628.12
2008	634.69	3.67	100.25	0.88	0.01	0.15	41.38	7.88	19.44	38.24	12.94	938.85
2009	403.78	4.00	129.00	2.38	0.01	0.15	59.63	9.83	0.00	46.21	14.58	669.56
2010	437.61	4.00	148.13	3.00	0.01	0.15	70.00	10.80	0.00	50.86	15.00	745.23
2011	599.45	4.00	160.00	3.00	0.01	0.17	78.00	12.20	0.00	53.75	21.05	931.60
2012	703.20	4.00	177.50	3.00	0.01	0.15	86.00	21.38	6.40	52.96	25.83	1080.41
2013	784.11	4.00	193.75	3.00	0.01	0.15	94.00	24.80	12.06	58.27	28.38	1203.50
2014	833.45	4.00	206.50	0.75	0.01	0.15	102.00	17.10	5.48	61.20	28.90	1274.70
2015	571.56	4.00	232.38	0.00	0.01	0.23	141.50	17.40	0.00	64.70	34.75	1083.94

Figure 3-3 Average Annual Contribution of Individual Components for Diesel 0.005% in cents per litre (2006-2015)



Source: Department of Energy



4. Illuminating Paraffin Prices

Table4-1Monthly Illuminating Paraffin Prices in cents per litre (2006-2015)

Period	Illuminating Paraffin	
	Coast	Gauteng
04-Jan-06	376.20	398.60
01-Feb-06	380.20	402.60
01-Mar-06	384.20	402.60
05-Apr-06	389.20	412.20
03-May-06	409.20	432.20
07-Jun-06	429.20	452.20
05-Jul-06	465.20	488.20
02-Aug-06	486.20	509.20
06-Sep-06	481.20	504.20
04-Oct-06	459.20	482.20
01-Nov-06	446.20	469.20
06-Dec-06	421.20	444.20
03-Jan-07	424.20	447.20
07-Feb-07	398.20	421.20
07-Mar-07	408.20	431.20
04-Apr-07	438.20	462.10
02-May-07	456.20	480.10
06-Jun-07	458.20	482.10
04-Jul-07	475.20	499.10
01-Aug-07	482.20	506.10
05-Sep-07	482.20	506.10
03-Oct-07	495.20	519.10
07-Nov-07	505.20	529.10
05-Dec-07	563.20	587.10
02-Jan-08	554.20	578.10
06-Feb-08	556.20	580.10
05-Mar-08	632.20	656.10
02-Apr-08	750.20	774.10
07-May-08	805.70	829.60
04-Jun-08	876.70	900.60
02-Jul-08	925.70	949.60
06-Aug-08	929.10	953.00
03-Sep-08	783.10	807.00
01-Oct-08	718.10	742.00
05-Nov-08	679.10	703.00
03-Dec-08	604.10	628.00
07-Jan-09	467.60	496.70
04-Feb-09	453.60	482.70
04-Mar-09	427.60	456.70
01-Apr-09	422.60	451.70
06-May-09	435.60	464.70
03-Jun-09	426.60	455.70
01-Jul-09	472.60	501.70

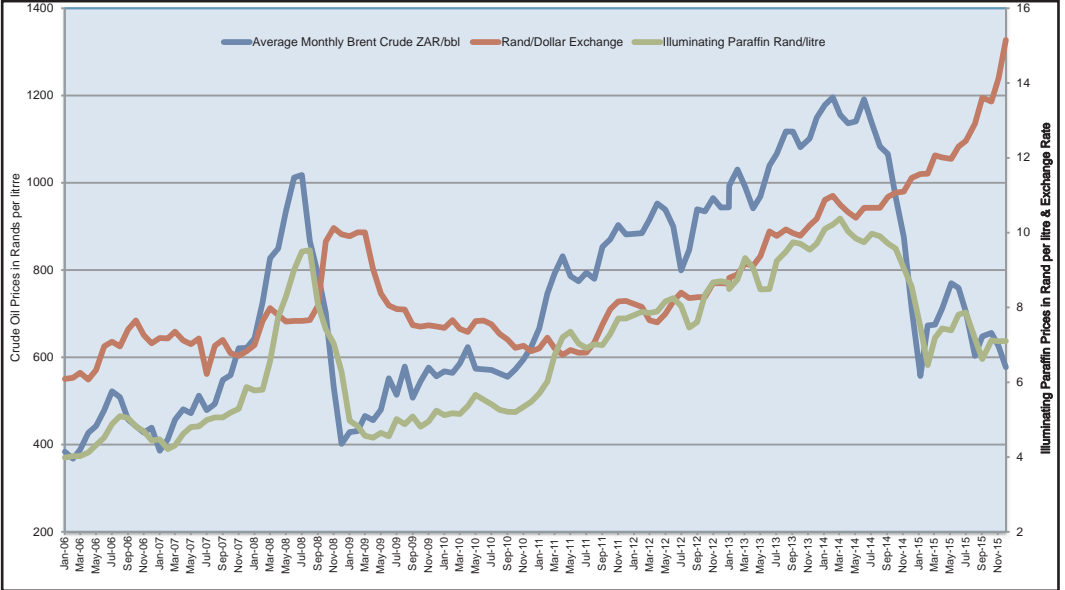
Period	Illuminating Paraffin	
	Coast	Gauteng
05-Aug-09	458.60	487.70
02-Sep-09	479.60	508.70
07-Oct-09	452.10	481.20
04-Nov-09	466.10	495.20
02-Dec-09	495.10	524.20
06-Jan-10	483.10	512.20
03-Feb-10	488.10	517.20
03-Mar-10	486.10	515.20
07-Apr-10	507.10	536.20
05-May-10	538.10	566.20
02-Jun-10	525.10	553.20
07-Jul-10	513.10	541.20
04-Aug-10	498.10	526.20
01-Sep-10	493.10	521.20
06-Oct-10	492.10	520.20
03-Nov-10	506.10	534.20
01-Dec-10	520.10	548.20
05-Jan-11	541.71	569.81
02-Feb-11	573.71	601.81
02-Mar-11	643.71	671.81
06-Apr-11	684.51	720.41
04-May-11	699.51	735.41
01-Jun-11	667.51	703.41
06-Jul-11	655.51	691.41
03-Aug-11	665.51	701.41
07-Sep-11	663.51	699.41
05-Oct-11	693.51	729.41
02-Nov-11	734.53	770.41
07-Dec-11	777.53	770.41
04-Jan-12	752.53	788.43
01-Feb-12	749.53	785.43
07-Mar-12	753.53	789.43
04-Apr-12	774.13	816.03
02-May-12	783.13	825.03
06-Jun-12	762.13	804.03
04-Jul-12	704.13	746.03
01-Aug-12	719.13	761.03
05-Sep-12	792.13	834.03
03-Oct-12	825.13	867.03
07-Nov-12	828.13	870.03
05-Dec-12	824.13	866.03
02-Jan-13	807.13	849.03
06-Feb-13	833.13	875.03

Period	Illuminating Paraffin	
	Coast	Gauteng
06-Mar-13	860.33	906.23
03-Apr-13	802.33	848.23
01-May-13	803.33	849.23
05-Jun-13	878.33	924.22
03-Jul-13	903.33	949.23
07-Aug-13	928.33	974.23
04-Sep-13	924.33	970.23
02-Oct-13	908.33	954.23
06-Nov-13	924.83	970.73
04-Dec-13	963.83	1009.73
07-Jan-14	975.83	1021.73
04-Feb-14	991.83	1037.73
04-Mar-14	953.03	1003.23
08-Apr-14	934.03	984.23
06-May-14	924.03	974.23
03-Jun-14	947.03	997.23
01-Jul-14	940.03	990.23
05-Aug-14	921.03	971.23
02-Sep-14	907.03	957.23
07-Oct-14	855.03	905.23
04-Nov-14	805.73	855.93
02-Dec-14	697.73	747.93
07-Jan-15	595.73	645.93
04-Feb-15	668.73	718.93
04-Mar-15	690.83	743.83
01-Apr-15	685.83	738.83
06-May-15	727.83	780.83
03-Jun-15	733.83	786.83
01-Jul-15	663.83	716.83
05-Aug-15	608.83	661.83
02-Sep-15	658.83	711.83
07-Oct-15	656.83	709.83
04-Nov-15	657.03	710.03
02-Dec-15	860.33	906.23

Source: Department of Energy



Figure 4-1 Monthly Illuminating Paraffin Prices, Crude Oil Prices and Rand/Dollar Exchange Rate (2006-2015)



Source: Department of Energy

5. Electricity Prices

Table 5-1 Annual Average Eskom Prices by Customer Category in cents per kilowatt per hour (2006-2015)

	Local Authorities	Residential	Commercial	Industrial	Mining	Agriculture	Traction	International	Average Prices
2006/07	16.88	41.74	23.50	16.01	16.90	33.69	21.05	11.15	18.06
2007/08	18.21	44.56	24.85	17.28	17.99	35.91	23.31	14.16	19.60
2008/09	23.29	53.43	31.61	21.69	23.12	45.78	29.78	18.45	24.97
2009/10	30.84	63.98	40.97	27.03	30.25	58.96	38.23	22.47	31.95
2010/11	39.53	66.45	52.63	34.34	39.78	72.72	48.55	31.04	42.20
2011/12	48.03	77.50	63.92	40.12	48.10	87.22	56.24	36.73	50.27
2012/13	54.59	87.05	73.24	45.56	55.74	99.75	68.66	42.72	58.49
2013/14	60.67	92.41	82.67	51.79	64.66	108.75	77.34	47.56	62.81
2014/15	65.92	98.06	89.16	56.81	69.52	115.66	83.63	52.55	67.63
2015/16	74.11	108.11	100.07	62.64	78.01	128.19	96.60	59.82	75.38

Source: Eskom

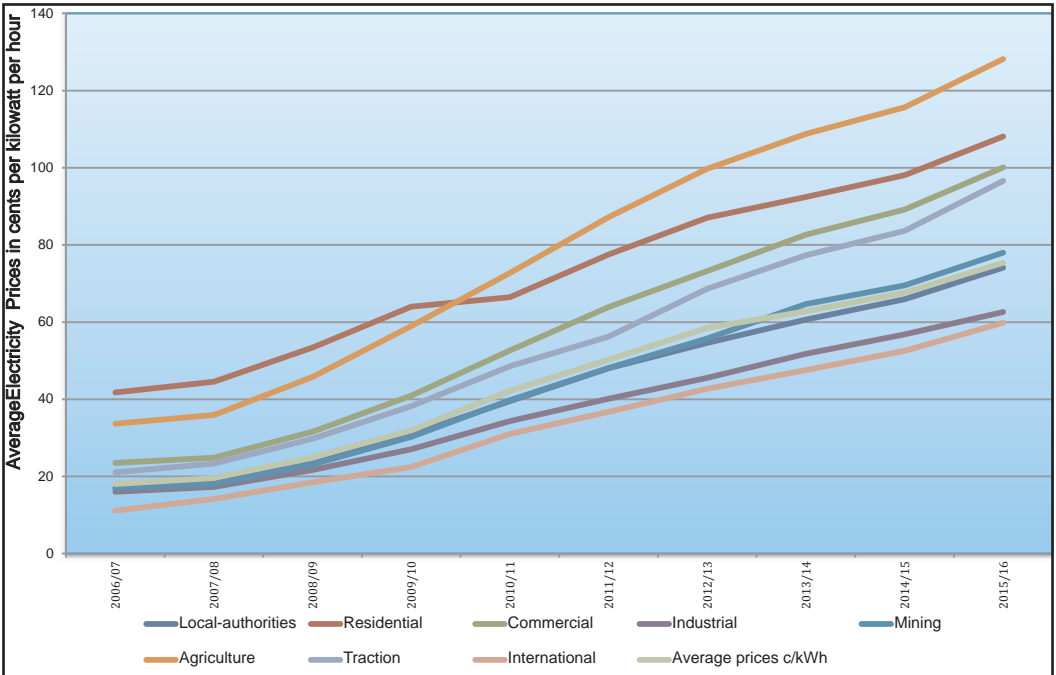


Table 5-2 Annual Eskom's Average Tariff Adjustment (2005-2016)

Period	Average Price Adjustment (%)	Consumer Price Index (%)
2006	5.1	4.6
2007	5.9	5.2
2008	27.5	6.6
2009	31.3	6.2
2010	24.8	5.4
2011	25.8	4.5
2012	16.0	5.2
2013	8.0	6.0
2014	8.0	6.0
2015	12.7	5.7

Source: Eskom

Figure 5-1 Annual Average Eskom Prices by Customer Category in cents per kilowatt per hour (2006-2015)



Source: Eskom



Figure 5-2 Annual Eskom's Average Tariff Adjustment (2006-2016)



Source: Eskom



6. Liquefied Petroleum Gas Prices

Table6-1 Monthly Regulated Maximum Refinery Gate and Maximum Retail Prices for Liquefied Petroleum Gas (2006-2015)

Period	Regulated Maximum Refinery Gate Prices					Regulated Maximum Retail Prices	
	Cents per kilogram	cents per litre	Rand per Gigajoule	Rand per kilogram	Rand per ton	Inland (cents per Kg)	Coastal(cents per Kg)
01-Jan-06	369.85	205.27	74.81	3.70	3698.50		
01-Feb-06	352.34	195.55	71.27	3.52	3523.42		
01-Mar-06	395.64	219.58	80.03	3.96	3956.44		
01-Apr-06	436.88	242.47	88.37	4.37	4368.78		
01-May-06	481.25	267.09	97.34	4.81	4812.47		
01-Jun-06	518.49	287.76	104.87	5.18	5184.86		
01-Jul-06	560.85	311.27	113.44	5.61	5608.46		
01-Aug-06	512.24	284.29	103.61	5.12	5122.37		
01-Sep-06	438.99	243.64	88.79	4.39	4389.92		
01-Oct-06	431.72	239.60	87.31	4.32	4317.15		
01-Nov-06	414.30	229.94	83.79	4.14	4143.03		
01-Dec-06	422.50	234.49	85.45	4.23	4225.02		
01-Jan-07	387.83	215.25	78.45	3.88	3878.34		
01-Feb-07	427.20	237.09	86.41	4.27	4272.00		
01-Mar-07	495.33	274.91	100.19	4.95	4953.32		
01-Apr-07	530.06	294.18	107.21	5.30	5300.61		
01-May-07	565.79	314.01	114.44	5.66	5657.85		
01-Jun-07	557.50	309.41	112.76	5.58	5575.00		
01-Jul-07	543.76	301.79	109.98	5.44	5437.59		
01-Aug-07	514.02	285.28	103.97	5.14	5140.23		
01-Sep-07	529.75	294.01	107.15	5.30	5297.52		
01-Oct-07	527.73	292.89	106.74	5.28	5277.30		
01-Nov-07	586.91	325.73	118.71	5.87	5869.08		
01-Dec-07	578.45	321.04	117.00	5.78	5784.46		
01-Jan-08	612.16	339.75	123.82	6.12	6121.61		
01-Feb-08	689.78	382.82	139.52	6.90	6897.77		
01-Mar-08	756.74	419.99	153.06	7.57	7567.43		
01-Apr-08	756.81	420.02	153.06	7.57	7568.07		
01-May-08	788.60	437.67	159.51	7.89	7885.97		
01-Jun-08	849.07	471.24	171.74	8.49	8490.73		
01-Jul-08	946.61	525.37	191.47	9.47	9466.13		
01-Aug-08	904.16	501.81	182.88	9.04	9041.62		
01-Sep-08	789.15	437.98	159.62	7.89	7891.48		
01-Oct-08	761.67	422.73	154.06	7.62	7616.74		
01-Nov-08	684.30	379.79	138.41	6.84	6843.00		
01-Dec-08	480.70	266.79	97.23	4.81	4806.97		
01-Jan-09	373.97	207.56	75.64	3.74	3739.74		
01-Feb-09	439.66	244.01	88.93	4.40	4396.58		
01-Mar-09	473.76	262.94	95.82	4.74	4737.58		
01-Apr-09	473.81	262.96	95.83	4.74	4812.06		



Period	Regulated Maximum Refinery Gate Prices					Regulated Maximum Retail Prices	
	Cents per kilogram	cents per litre	Rand per Gigajoule	Rand per kilogram	Rand per ton	Inland (cents per Kg)	Coastal(cents per kg)
01-May-09	475.89	264.12	96.26	4.76	4758.95		
01-Jun-09	492.11	273.12	99.54	4.92	4995.13		
01-Jul-09	545.75	302.89	110.39	5.46	5457.53		
01-Aug-09	507.72	281.79	102.69	5.08	5077.22		
01-Sep-09	566.98	314.68	114.68	5.67	5669.84		
01-Oct-09	493.70	274.00	99.86	4.94	4936.95		
01-Nov-09	510.38	283.26	103.23	5.10	5103.85		
01-Dec-09	534.95	296.90	108.20	5.35	5349.53		
01-Jan-10	520.57	288.92	105.29	5.21	5205.70		
01-Feb-10	548.47	304.40	110.94	5.48	5484.74		
01-Mar-10	550.82	305.71	111.41	5.51	5508.21		
01-Apr-10	586.72	325.63	271.75	5.87	5867.21		
01-May-10	597.13	331.41	120.78	5.97	5971.28		
01-Jun-10	566.06	314.16	114.49	5.66	5660.60		
01-Jul-10	549.45	304.94	111.13	5.49	5494.46	1727.00	1569.00
01-Aug-10	541.57	300.57	109.54	5.42	5415.68	1801.00	1619.00
01-Sep-10	521.87	289.64	105.56	5.22	5218.72	1775.00	1593.00
01-Oct-10	516.70	286.77	104.51	5.17	5166.97	1768.00	1586.00
01-Nov-10	541.42	300.49	109.51	5.41	5414.20	1800.00	1618.00
01-Dec-10	553.87	307.40	112.03	5.54	5538.71	1817.00	1635.00
01-Jan-11	588.84	326.81	119.09	5.89	5888.41	1863.00	1681.00
01-Feb-11	620.66	344.47	125.53	6.21	6206.59	1904.00	1722.00
01-Mar-11	647.18	374.17	130.89	6.47	6471.80	1975.00	1793.00
01-Apr-11	712.97	395.70	144.20	7.13	7129.72	2025.00	1843.00
01-May-11	753.33	418.10	152.36	7.53	7533.31	2078.00	1896.00
01-Jun-11	745.53	413.77	150.78	7.45	7455.34	2068.00	1886.00
01-Jul-11	713.14	395.79	144.23	7.13	7131.37	2026.00	1844.00
01-Aug-11	742.76	412.23	150.22	7.43	7427.60	2064.00	1882.00
01-Sep-11	742.44	412.05	150.16	7.42	7424.40	2064.00	1882.00
01-Oct-11	789.50	438.17	159.63	7.89	7895.03	2126.00	1944.00
01-Nov-11	815.33	452.52	164.90	8.15	8153.50	2160.00	1978.00
01-Dec-11	784.71	435.51	158.71	7.84	7847.10	2119.00	1937.00
01-Jan-12	785.76	436.10	158.92	7.86	16094.70	2121.00	1939.00
01-Feb-12	823.71	457.16	166.60	8.24	8237.10	2171.00	1989.00
01-Mar-12	851.41	472.54	172.20	8.51	8514.14	2207.00	2025.00
01-Apr-12	903.40	501.39	182.71	9.03	9033.98	2275.00	2093.00
01-May-12	927.27	514.63	187.54	9.27	9272.68	2306.00	2124.00
01-Jun-12	851.40	472.53	172.20	8.51	8514.01	2207.00	2025.00
01-Jul-12	765.42	424.81	154.81	7.65	7654.21	2094.00	1912.00
01-Aug-12	805.14	446.85	162.84	8.05	8051.41	2146.00	1964.00
01-Sep-12	903.61	501.50	182.75	9.04	9036.11	2275.00	2093.00
03-Oct-12	901.11	500.11	182.25	9.01	9011.10	2272.00	2090.00
07-Nov-12	901.88	500.54	182.40	9.02	9018.80	2273.00	2091.00
05-Dec-12	875.42	485.86	177.05	8.75	8754.21	2238.00	2056.00



Period	Regulated Maximum Refinery Gate Prices					Regulated Maximum Retail Prices	
	Cents per kilogram	cents per litre	Rand per Gigajoule	Rand per kilogram	Rand per ton	Inland (cents per Kg)	Coastal(cents per Kg)
01-Jan-13	868.54	482.04	175.66	8.69	8685.40	2229.00	2047.00
06-Feb-13	924.28	512.98	186.94	9.24	9242.85	2302.00	2120.00
06-Mar-13	1014.23	562.91	205.13	10.14	10142.25	2420.00	2238.00
03-Apr-13	972.22	539.58	196.63	9.72	9722.21	2365.00	2183.00
01-May-13	910.44	505.29	184.13	9.10	9104.35	2284.00	2102.00
05-Jun-13	914.40	507.49	184.94	9.14	9144.01	2289.00	2107.00
03-Jul-13	1012.79	562.10	204.83	10.13	10127.85	2418.00	2236.00
07-Aug-13	1029.34	571.28	208.18	10.29	10293.42	2440.00	2258.00
03-Sep-13	1035.82	574.88	209.49	10.36	10358.19	2449.00	2267.00
04-Oct-13	1005.70	558.16	203.40	10.06	10056.99	2409.00	2227.00
02-Nov-13	974.66	558.16	203.40	9.75	9746.58	2368.00	2186.00
04-Dec-13	988.41	548.57	399.82	9.88	9884.10	2386.00	2204.00
07-Jan-14	1030.42	1143.76	416.80	10.51	10304.18	2442.00	2260.00
04-Feb-14	1071.62	1189.50	216.73	10.72	21432.34	2496.00	2314.00
04-Mar-14	2232.98	619.65	451.62	22.32	33494.55	2554.00	2372.00
08-Apr-14	1099.19	1220.10	222.31	10.99	21983.76	2532.00	2350.00
06-May-14	3267.99	1813.73	439.25	21.72	21922.88	2528.00	2346.00
03-Jun-14	1075.70	597.01	217.56	10.76	10756.99	2501.00	2319.00
01-Jul-14	1119.62	1242.78	452.88	11.20	22392.34	2559.00	2377.00
05-Aug-14	2221.64	616.51	449.32	22.22	11108.20	2547.00	2365.00
02-Sep-14	2057.50	1141.92	416.12	10.29	10287.55	2439.00	2257.00
07-Oct-14	2075.26	1151.78	419.72	10.38	10376.33	2451.00	2269.00
04-Nov-14	1915.72	1063.22	193.73	19.96	9578.60	2346.00	2164.00
02-Dec-14	861.89	478.35	348.64	17.24	8618.89	2221.00	2039.00
07-Jan-15	702.19	389.72	142.02	7.02	7021.93	2011.00	1829.00
04-Feb-15	702.19	391.20	14.20	7.02	7021.93	1861.00	1679.00
04-Mar-15	704.87	391.20	14.26	7.05	7048.68	2015.00	1833.00
01-Apr-15	770.11	427.41	15.58	7.70	15.58	2100.00	1918.00
06-May-15	783.04	434.59	15.84	7.83	7701.09	2117.00	1935.00
03-Jun-15	858.78	476.63	15.84	8.59	7830.37	2217.00	2035.00
01-Jul-15	901.77	500.48	17.37	9.02	8587.84	2273.00	2091.00
05-Aug-15	833.68	462.69	18.24	8.34	9017.73	2184.00	2002.00
02-Sep-15	746.07	414.07	16.86	7.46	8336.80	2069.00	1887.00
07-Oct-15	754.89	418.96	15.09	7.55	7460.65	2080.00	1898.00
04-Nov-15	718.53	371.96	15.27	7.19	7548.88	2033.00	1851.00
02-Dec-15	718.53	397.15	14.53	7.19	7185.31	2029.00	1847.00

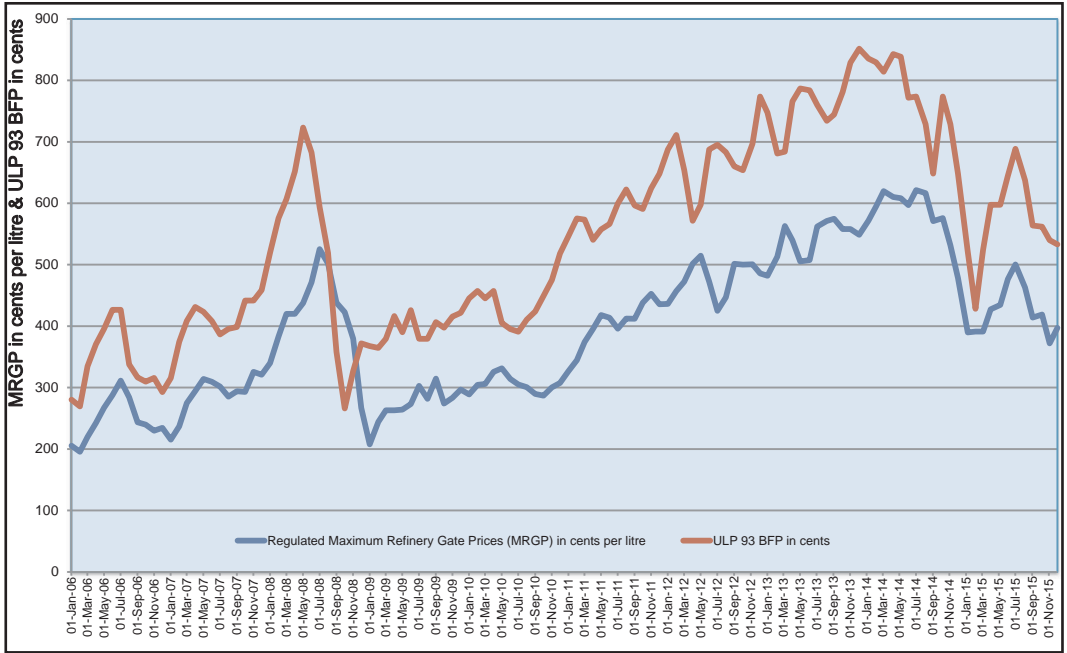
Source: Department of Energy

Notes:

x The Department of Energy implemented the *Working Rules to Set the Monthly Maximum Retail Price for Liquefied Petroleum Gas (LPG)* since July 2010. The maximum retail price of LPG is basically fixed by a way of regulation by the Department of Energy on a monthly basis.



Figure 6-1 Monthly Regulated Maximum Refinery Gate (MRGP) in cents per litre and ULP 93 Basic Fuel Price (BFP) in cents (2006-2015)



Source: Department of Energy



Table 74: Average Sasol Monthly Natural Gas Prices Rand per Gigajoule (R/GJ)

Gas price effective	Annual consumption 0 - 5000 GJ/a	Annual consumption 5000- 15000 GJ/a	Annual consumption 15000- 40000 GJ/a	Annual consumption 40000 -100000 GJ/a	Annual consumption 100000- 400000 GJ/a	Annual consumption > 400000 GJ/a
01-Jan -06	102.48	103.22	94.48	94.48	81.30	54.12
01-Feb-06	104.59	105.47	96.28	96.28	82.61	54.12
01-Mar-06	104.79	106.01	97.66	97.66	84.40	57.35
01-Apr-06	109.35	110.29	101.56	101.56	87.84	60.03
01-May-06	111.88	112.83	103.37	103.37	88.99	59.33
01-Jun -06	115.97	117.01	107.09	107.09	92.09	61.00
01-Jul -06	130.07	130.92	118.89	118.89	101.61	65.13
01-Aug -06	135.67	136.78	124.77	124.77	106.99	69.84
01-Sep-06	132.01	133.25	121.31	121.31	103.79	66.86
01-Oct-06	131.48	132.36	119.40	119.40	101.42	62.70
01-Nov-06	132.28	132.97	120.79	120.79	103.33	66.55
01-Dec-06	121.60	122.11	110.55	110.55	94.31	59.85
01-Jan-07	120.25	121.14	109.56	109.56	93.25	58.32
01-Feb-07	116.79	117.31	106.45	106.45	91.00	58.41
01-Mar-07	119.62	120.14	109.65	109.65	94.24	62.32
01-Apr-07	126.26	126.92	115.79	115.79	99.43	65.43
01-May-07	129.15	130.18	119.41	119.41	102.94	69.13
01-Jun-07	127.28	128.35	117.85	117.85	101.67	68.51
01-Jul-07	134.02	135.21	124.13	124.13	107.05	72.00
01-Aug-07	134.24	135.63	124.90	124.90	107.95	73.44
01-Sep-07	136.12	137.50	126.83	126.83	109.80	75.32
01-Oct-07	141.11	142.55	131.24	131.24	113.43	77.12
01-Nov-07	139.64	141.43	130.91	130.91	113.56	78.67
01-Dec-07	152.70	155.64	144.92	144.92	126.08	88.45
01-Jan-08	152.97	155.53	144.13	144.13	124.99	86.32



Gas price effective	Annual consumption 0-5000 GJ/a	Annual consumption 5000-15000 GJ/a	Annual consumption 15000-40000 GJ/a	Annual consumption 40000-100000 GJ/a	Annual consumption 100000-400000 GJ/a	Annual consumption > 400000 GJ/a
01-Feb-08	155.11	157.63	146.29	146.29	127.04	88.39
01-Mar-08	172.95	175.52	161.96	161.96	140.01	95.17
01-Apr-08	195.72	198.84	182.70	182.70	157.26	104.44
01-May-08	205.30	208.91	192.01	192.01	165.21	109.45
01-Jun-08	221.35	225.78	207.41	207.41	178.20	117.00
01-Jul-08	241.70	246.61	226.35	226.35	194.29	126.92
01-Aug-08	251.69	257.67	239.66	239.66	207.93	143.66
01-Sep-08	207.51	212.54	199.69	199.69	174.80	126.25
01-Oct-08	197.34	201.52	189.15	189.15	165.60	119.80
01-Nov-08	196.02	199.34	185.39	185.39	161.26	113.13
01-Dec-08	171.45	172.29	154.40	154.40	130.42	78.06
01-Jan-09	152.34	152.12	137.39	137.39	117.22	74.58
01-Feb-09	148.87	148.81	135.02	135.02	115.65	75.17
01-Mar-09	144.07	144.35	132.66	132.66	114.84	78.96
01-Apr-09	138.18	137.78	126.31	126.31	109.32	75.19
01-May-09	137.99	138.38	127.68	127.68	110.88	77.46
01-Jun-09	135.77	136.61	127.28	127.28	111.34	80.61
01-Jul-09	145.26	146.76	137.13	137.13	120.08	87.23
01-Aug-09	139.99	141.54	132.95	132.95	116.92	86.67
01-Sep-09	149.28	151.13	142.09	142.09	124.99	92.77
01-Oct-09	138.12	139.79	131.84	131.84	116.32	87.50
01-Nov-09	137.66	139.49	131.35	131.35	115.65	86.21
01-Dec-09	149.16	151.35	142.58	142.58	125.52	93.46
01-Jan-10	144.07	146.34	138.33	138.33	122.11	92.01
01-Feb-10	148.71	151.26	143.14	143.14	126.41	95.41
01-Mar-10	145.14	147.23	139.06	139.06	122.72	92.43
01-Apr-10	147.57	149.75	140.93	140.93	123.98	91.96
01-May-10	153.42	155.84	146.19	146.19	128.19	93.59



Gas price effective	Annual consumption 0 - 5000 GJ/a	Annual consumption 5000 - 15000 GJ/a	Annual consumption 15000 - 40000 GJ/a	Annual consumption 40000 - 100000 GJ/a	Annual consumption 100000 - 400000 GJ/a	Annual consumption > 400000 GJ/a
01-Jun-10	155.98	158.36	148.72	148.72	130.56	95.86
01-Jul-10	149.02	151.02	141.22	141.22	123.60	89.49
01-Aug-10	146.94	148.90	139.49	139.49	122.29	89.24
01-Sep-10	146.15	148.28	139.07	139.07	121.98	89.19
01-Oct-10	142.19	144.14	134.73	134.73	117.85	85.09
01-Nov-10	143.95	146.22	136.85	136.85	119.75	86.57
01-Dec-10	148.54	151.01	141.57	141.57	124.03	90.15
01-Jan-11	151.97	154.57	144.65	144.65	126.51	91.17
01-Feb-11	156.91	159.76	149.53	149.53	130.73	94.04
01-Mar-11	175.41	179.12	168.65	168.65	148.06	108.57
01-Apr-11	182.93	187.09	176.02	176.02	154.33	112.42
01-May-11	187.22	191.56	180.29	180.29	158.11	115.27
01-Jun-11	180.86	185.01	174.37	174.37	153.12	112.34
01-Jul-11	177.45	181.57	171.60	171.60	151.04	112.04
01-Aug-11	179.78	183.91	173.77	173.77	152.93	113.39
01-Sep-11	183.72	187.96	177.88	177.88	156.76	116.97
01-Oct-11	190.57	194.89	184.53	184.53	162.70	121.73
01-Nov-11	203.51	208.21	197.33	197.33	174.11	130.66
01-Dec-11	215.88	221.06	209.99	209.99	185.58	140.30
01-Jan-12	210.60	215.39	204.49	204.49	180.73	136.71
01-Feb-12	214.31	219.42	209.23	209.23	185.53	142.42
01-Mar-12	209.43	214.58	204.31	204.31	180.90	137.90
01-Apr-12	212.62	218.03	207.77	207.77	184.04	140.43
01-May-12	216.45	221.96	211.37	211.37	187.10	142.47
01-Jun-12	211.63	216.77	206.17	206.17	182.40	138.52
01-Jul-12	198.25	202.34	191.51	191.51	168.93	126.73
01-Aug-12	199.09	203.32	192.20	192.20	169.32	126.20
01-Sep-12	217.49	222.51	210.42	210.42	185.31	137.83



Gas price effective	Annual consumption 0 - 5000 GJ/a	Annual consumption 5000 - 15000 GJ/a	Annual consumption 15000 - 40000 GJ/a	Annual consumption 40000 - 100000 GJ/a	Annual consumption 100000 - 400000 GJ/a	Annual consumption > 400000 GJ/a
01-Oct-12	225.29	230.80	218.46	218.46	192.45	143.32
01-Nov-12	229.64	234.96	221.36	221.36	194.28	142.22
01-Dec-12	224.07	228.89	214.96	214.96	188.27	136.45
01-Jan-13	220.05	224.70	210.98	184.79	170.27	133.97
01-Feb-13	223.67	228.59	214.90	188.35	173.67	136.97
01-Mar-13	240.66	246.11	231.15	202.38	186.32	146.40
01-Apr-13	235.75	240.96	227.38	199.94	185.16	147.70
01-May-13	225.93	230.77	218.16	192.18	178.42	143.22
01-Jun -13	228.19	232.89	220.00	193.75	179.84	144.21
01-Jul -13	247.20	252.29	238.62	210.36	195.53	157.35
01-Aug -13	249.60	254.53	239.21	209.78	193.69	153.10
01-Sep -13	254.21	259.49	196.16	216.77	227.07	150.30
01-Oct-13	256.42	261.76	197.63	218.57	229.04	151.43
01-Nov-13	254.87	260.08	197.65	217.63	227.58	151.44
01-Dec-13	258.06	263.32	247.46	216.95	200.21	158.08
01-Jan-14	266.87	272.44	255.41	223.40	205.48	160.90
01-Feb-14	271.00	276.64	260.25	228.36	210.95	167.02
14-Mar-14	277.89	283.63	266.53	233.65	215.57	170.15

Source: Sasol

Notes:

Since April 2014, the above-mentioned indicative gas prices are subject to monthly adjustment in accordance with the applicable adjustment formula. The maximum Gas Energy Prices ("GE") are determined in accordance with the Methodology to Approve Maximum Prices of Piped Gas in South Africa promulgated by NERSA in October 2011 (the "Methodology"). In terms of the said Methodology, the maximum energy prices are referenced to price indicators of certain energy sources.



Table 7-2: Maximum Monthly Sasol Natural Gas Prices in Rand per Gigajoule (R/GJ)

Gas price effective	Maximum price (SA R/GJ)	Class1	Class 2	Class 3	Class 4	Class 5	Class 6
		33 GJ	333 GJ	3 333 GJ	33 333 GJ	333 333 GJ	1 054 093 GJ
14-Apr-14	134.18	100.00	90.00	75.00	50.00	45.00	40.00
14-May-14	134.18	100.00	90.00	75.00	50.00	45.00	40.00
13-Jun-14	134.18	100.00	90.00	75.00	50.00	45.00	40.00
13-Jul-14	138.40	102.90	92.61	77.17	51.45	46.30	41.16
12-Aug-14	138.40	102.90	92.61	77.17	51.45	46.30	41.16
11-Sep-14	138.40	102.90	92.61	77.17	51.45	46.30	41.16
11-Oct-14	141.18	104.97	94.47	78.72	52.48	47.23	41.99
10-Nov-14	141.18	104.97	94.47	78.72	52.48	47.23	41.99
10-Dec-14	141.18	104.97	94.47	78.72	52.48	47.23	41.99
09-Jan-15	139.52	103.74	93.36	77.19	51.86	46.67	41.50
08-Feb-15	139.52	103.74	93.36	77.19	51.86	46.67	41.50
10-Mar-15	139.52	103.74	93.36	77.19	51.86	46.67	41.50
30-Apr-15	132.83	98.75	88.88	74.06	49.37	44.43	39.51
30-May-15	132.83	98.75	88.88	74.06	49.37	44.43	39.51
30-Jun-15	132.83	98.75	88.88	74.06	49.37	44.43	39.51
30-Jul-15	118.65	88.20	79.39	66.15	44.10	39.68	35.28
30-Aug-15	118.65	88.20	79.39	66.15	44.10	39.68	35.28
30-Sep-15	118.65	88.20	79.39	66.15	44.10	39.68	35.28
30-Oct-15	132.52	98.51	88.67	73.88	49.26	44.32	39.40
30-Nov-15	132.52	98.51	88.67	73.88	49.26	44.32	39.40
30-Dec-15	132.52	98.51	88.67	73.88	49.26	44.32	39.40

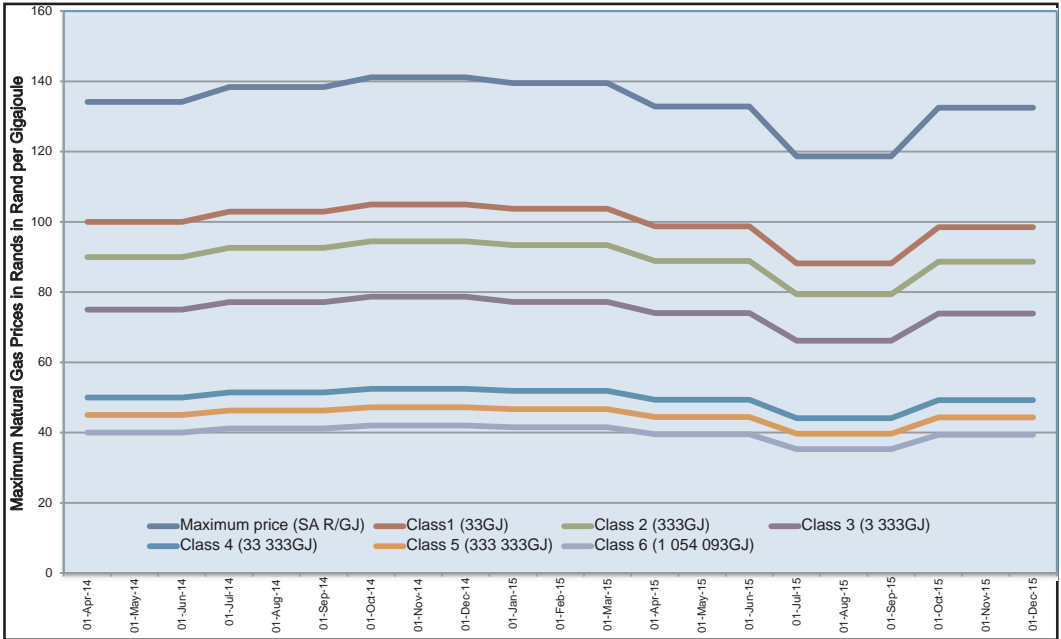
Source Sasol

Notes:

x Since April 2014, the abovementioned indicative gas prices are subject to monthly adjustment in accordance with the applicable adjustment formula. The maximum Gas Energy Prices ("GE") are determined in accordance with the Methodology to Approve Maximum Prices of Piped Gas in South Africa promulgated by NERSA in October 2011 (the "Methodology"). In terms of the said Methodology, the maximum energy prices are referenced to price indicators of certain energy sources.



Figure7-1: Maximum Monthly Sasol Natural Gas Prices in Rand per Gigajoule (R/GJ)



Source: Sasol



Table 7-3 : Monthly Sasol Natural Gas Tariffs (Rand per GigaJoule)

Month	Regulatory Levy Month	Rompco Tariff	Sasol Gas DX	Sasol Gas TX - Zone 1	Sasol Gas TX - Zone 2	Sasol Gas TX - Zone 3	Trading Margin	TPL
Apr-14	0.38	0.00	10.42	5.09	14.20	5.61	8.21	8.55
May-14	0.38	0.00	10.42	5.09	14.20	5.61	8.21	8.55
Jun-14	0.38	0.00	10.42	5.09	14.20	5.61	8.21	8.55
Jul-14	0.38	11.79	10.98	5.13	13.36	5.94	10.40	8.55
Aug-14	0.38	11.81	10.98	5.13	13.36	5.94	10.40	8.55
Sep-14	0.38	11.80	10.98	5.13	13.36	5.94	10.40	8.55
Oct-14	0.38	12.00	10.98	5.13	13.36	5.94	10.40	8.55
Nov-14	0.38	12.00	10.98	5.13	13.36	5.94	10.40	8.55
Dec-14	0.38	12.00	10.98	5.13	13.36	5.94	10.40	8.55
Jan-15	0.38	12.08	10.98	5.13	13.36	5.94	10.40	8.55
Feb-15	0.38	12.05	10.98	5.13	13.36	5.94	10.40	8.55
Mar-15	0.38	12.03	10.98	5.13	13.36	5.94	10.40	8.55
Apr-15	0.33	12.02	10.98	5.13	13.36	5.94	10.40	8.98
May-15	0.33	12.03	10.98	5.13	13.36	5.94	10.40	8.98
Jun-15	0.33	12.03	10.98	5.13	13.36	5.94	10.40	8.98
Jul-15	0.33	12.16	14.37	5.13	13.36	5.94	10.40	8.98
Aug-15	0.33	12.16	14.37	6.00	19.16	6.09	10.40	8.98
Sep-15	0.33	12.15	14.37	6.00	19.16	6.09	8.69	8.98
Oct-15	0.33	12.42	14.37	6.00	19.16	6.09	8.69	8.98
Nov-15	0.33	12.43	14.37	6.00	19.16	6.09	8.69	8.98
Dec-15	0.33	12.42	14.37	6.00	19.16	6.09	8.69	8.98

Source: Sasol



Table 7-4: Monthly Sasol Weighted Average Prices (Rand per GigaJoule)

Month	Methane Rich Gas	Natural Gas	Zone 1	Zone 2	Zone 3	Total Sales
Apr-14	56.58	49.45	49.59	49.98	59.24	50.38
May-14	56.93	50.00	50.12	50.27	59.21	51.04
Jun-14	57.41	50.52	50.66	50.86	59.86	51.45
Jul-14	62.30	53.76	53.90	55.17	64.66	54.95
Aug-14	62.57	54.17	54.31	56.19	64.46	55.26
Sep-14	61.75	54.67	54.83	53.06	64.73	55.61
Oct-14	64.20	56.55	56.71	55.82	66.87	57.52
Nov-14	64.53	56.39	56.55	56.87	67.15	57.41
Dec-14	65.03	54.26	54.39	57.88	67.16	55.49
Jan-15	65.71	55.51	55.64	58.81	67.89	56.74
Feb-15	65.34	57.02	57.17	56.88	67.78	58.14
Mar-15	65.59	58.43	58.59	57.05	68.86	59.43
Apr-15	65.13	56.53	56.68	59.07	66.90	57.71
May-15	63.96	56.67	56.82	50.43	67.81	57.70
Jun-15	63.43	56.92	57.08	48.40	67.52	57.88
Jul-15	62.79	54.44	54.60	57.63	63.89	55.82
Aug-15	63.88	56.12	56.28	63.55	63.95	57.26
Sep-15	63.48	52.36	52.51	65.19	63.14	53.91
Oct-15	68.45	57.65	57.81	70.45	68.08	59.09
Nov-15	68.85	57.37	57.53	70.96	68.49	58.89
Dec-15	68.71	55.49	55.64	70.27	68.40	57.02

Source: Sasol

Notes:

Zone 1: SecundaGauteng-Sasolburg network – natural gas;
 Zone 2: Witbank-Middelburg network – methane-rich gas; and
 Zone 3: KwaZulu-Natal network – methane-rich gas.



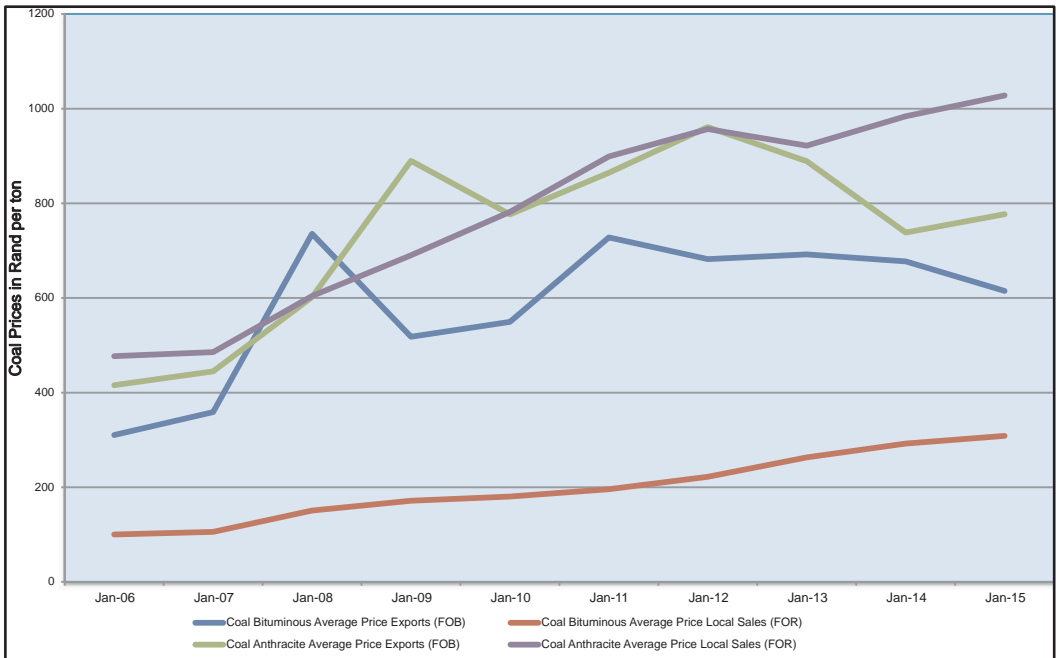
8 Coal Prices

Table 8-1 Annual Average Local and Export Coal Prices In Rand per ton

Period	Coal Bituminous		Coal Anthracite	
	Average Price Exports (FOB)	Average Price Local Sales (FOR)	Average Price Exports (FOB)	Average Price Local Sales (FOR)
Jan - 06	310.42	100.00	415.58	477.17
Jan - 07	358.83	105.86	444.93	485.67
Jan - 08	735.64	150.68	602.11	604.24
Jan - 09	517.91	171.63	889.64	690.36
Jan - 10	549.33	180.50	776.83	781.75
Jan - 11	727.85	196.02	864.65	898.90
Jan - 12	682.00	222.00	961.00	957.00
Jan - 13	692.00	263.00	889.00	922.00
Jan - 14	677.50	292.42	738.17	983.92
Jan - 15	614.98	308.58	777.25	1028

Source: DMR

Figure 8-1 Annual Average Local and Export Coal Prices In Rand per ton



Source: DMR



9 Foreign Exchange

Table9-1 Average Monthly Foreign Exchange Rates (RSA Rand vs US Dollar)

Period	Rand/Dollar Exchange
Jan-06	6.09
Feb-06	6.12
Mar-06	6.25
Apr-06	6.07
May-06	6.33
Jun-06	6.96
Jul-06	7.09
Aug-06	6.96
Sep-06	7.41
Oct-06	7.65
Nov-06	7.26
Dec-06	7.04
Jan-07	7.19
Feb-07	7.17
Mar-07	7.35
Apr-07	7.12
May-07	7.02
Jun-07	7.17
Jul-07	6.22
Aug-07	6.97
Sep-07	7.13
Oct-07	6.78
Nov-07	6.70
Dec-07	6.83
Jan-08	6.99
Feb-08	7.64
Mar-08	7.98
Apr-08	7.80
May-08	7.62
Jun-08	7.64
Jul-08	7.64
Aug-08	7.66
Sep-08	8.05
Oct-08	9.76
Nov-08	10.12
Dec-08	9.96
Jan-09	9.91
Feb-09	10.01
Mar-09	10.01
Apr-09	9.02
May-09	8.37
Jun-09	8.05

Period	Rand/Dollar Exchange
Jul-09	7.96
Aug-09	7.94
Sep-09	7.53
Oct-09	7.49
Nov-09	7.52
Dec-09	7.49
Jan-10	7.45
Feb-10	7.66
Mar-10	7.43
Apr-10	7.34
May-10	7.64
Jun-10	7.65
Jul-10	7.55
Aug-10	7.30
Sep-10	7.14
Oct-10	6.92
Nov-10	6.97
Dec-10	6.83
Jan-11	6.91
Feb-11	7.19
Mar-11	6.91
Apr-11	6.73
May-11	6.86
Jun-11	6.79
Jul-11	6.79
Aug-11	7.06
Sep-11	7.54
Oct-11	7.95
Nov-11	8.16
Dec-11	8.18
Jan-12	8.01
Feb-12	7.66
Mar-12	7.60
Apr-12	7.83
May-12	8.16
Jun-12	8.40
Jul-12	8.25
Aug-12	8.28
Sep-12	8.28
Oct-12	8.65
Nov-12	8.65
Dec-12	8.64

Period	Rand/Dollar Exchange
Jan-13	8.79
Feb-13	8.88
Mar-13	9.18
Apr-13	9.11
May-13	9.37
Jun-13	10.03
Jul-13	9.91
Aug-13	10.09
Sep-13	9.99
Oct-13	9.92
Nov-13	10.20
Dec-13	10.37
Jan-14	10.88
Feb-14	10.99
Mar-14	10.75
Apr-14	10.55
May-14	10.40
Jun-14	10.67
Jul-14	10.66
Aug-14	10.67
Sep-14	10.96
Oct-14	11.07
Nov-14	11.10
Dec-14	11.46
Jan-15	11.57
Feb-15	11.58
Mar-15	12.07
Apr-15	12.01
May-15	11.97
Jun-15	12.30
Jul-15	12.45
Aug-15	12.91
Sep-15	13.61
Oct-15	13.50
Nov-15	14.13
Dec-15	15.15

Source: SARB



Figure9-1 Average Monthly Foreign Exchange Rates



Source: SARB



Appendix

Fuel Price Components

The mechanism that is used to determine the fuel prices in South Africa is the Basic Fuel Price (BFP) principle. The BFP constitutes approximately 60% of the final pump price; domestic costs and government levies account for approximately 15% and 25%, respectively. The final price of petroleum products is composed of a number of price elements and these can be divided into international and domestic elements. The international element, or Basic Fuel Price (BFP), is based on an import parity principal.

(i) The international elements that are included in the final fuel price are:

- International market cash prices
- Freight cost to bring product to South African ports
- Insurance costs
- Ocean loss allowance
- Cargo dues
- Coastal storage
- Stock financing cost

(ii) The domestic elements that are included in the final fuel price are:

- Transport costs (zone differential):
- Delivery costs (Service differential):
- Equalisation fund levy:
- Fuel Levy
- Customs & excise levy:
- Road Accident Fund (RAF):
- Slate levy:
- Incremental Inland Transport Recovery Levy



Department of Energy
192 Visagie Street,
Corner Paul Kruger & Visagie Street
Pretoria, 0002

Private Bag X96, Pretoria, 0001

www.energy.gov.za

Tel: (012) 406 7540

ISBN NO: 978-1920435-09-7