

Midlands Biogas Project

Path to a Sustainable Biogas facility

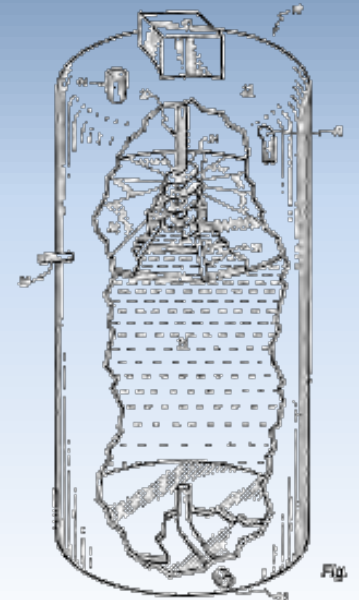


Fig. 2

Midlands Biogas Project

1. How did we get here

2. How we chose our technology – the ... *IBRTainer*

3. Make it Sustainable ?

1. How did we get here

- Primary interest in dairy and intensive farming
- 2007 Extensive research to establish suitable, available and adaptable **Anaerobic digestion** technologies
- Analysis of 5 suitable technologies primarily HRT / footprint /scalability /high level technology
- Visits to Germany, France, Italy, USA, Australia
- Collation of the designs and adaptability for the African environment – **Focus on Micronisation**
- 2010 We engaged with the EEP to attempt Bankability of a green field project – the ***IBRTainer***

1. How we chose our technology – the ...

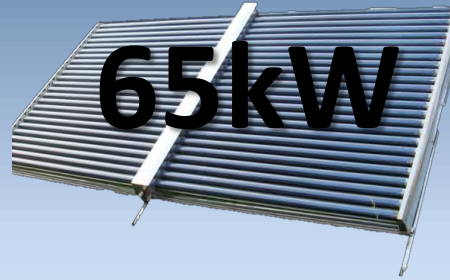
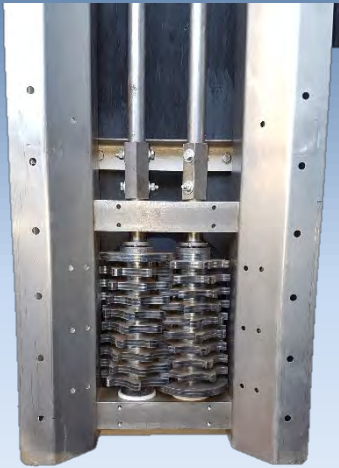
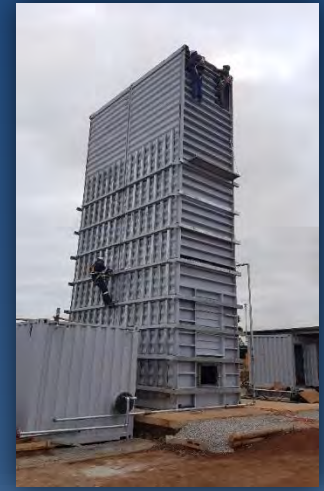
IBRTainer

- 500m³/d - gas
- 5-7days HRT
- 65+% CH₄
- 2000kg/day DS
- VS > 50% red.

- 600k USD
- No Agents
- No History



1. How we did it ?



1. Make it Sustainable ?



1. Make it Sustainable ?



- *Choose your site carefully to....*
- *Maximise your revenue*
 - *Naked flame return **first***
 - *Go for Electrical power last*
 - *Analyse and process your fertiliser for maximum return*
Liquid and Fibre
 - *Ensure you have stable off take agreements*
 - *Ensure you have multiple resource options*
 - *Build to expand*



Lowest Cost per kW Capex
Smallest footprint
Scalability to 1MW
Diverse substrate
ability



***Solar
thermal
integrated***



1. Make it Sustainable !!

- *Thank you*



RENEW
Energy Solutions

