

NORTH WEST MINING INVESTMENT CONFERENCE

STATUS OF HEALTH AND SAFETY IN THE MINING SECTOR

PRESENTED BY: DAVID MSIZA

CHIEF INSPECTOR OF MINES

DATE: 25 JANUARY 2022



mineral resources
& energy

Department:
Mineral Resources and Energy
REPUBLIC OF SOUTH AFRICA



PRESENTATION LAYOUT

- Introduction.
- Mine Health and Safety Performance.
- Areas of concern.
- Mine Health and Safety Interventions.
- Conclusion.



mineral resources
& energy

Department:
Mineral Resources and Energy
REPUBLIC OF SOUTH AFRICA



INTRODUCTION

- 2021 marked 25 years of the introduction of the Mine Health and Safety Act (Act No. 29 of 1996), as amended.
- Prior to the MHSA, the South African mining sector had the sixth highest fatality rate in the world.
- The MHSA promotes the spirit of tripartism and cooperation amongst all stakeholders on the mine health and safety of mineworkers and people affected by mining.
- In this regard, it is through the collaboration that the lowest fatalities were recorded during 2019 as well as the lowest injuries and occupational diseases during 2020.



mineral resources
& energy

Department:
Mineral Resources and Energy
REPUBLIC OF SOUTH AFRICA



MINE HEALTH AND SAFETY HISTORICAL CONTEXT

FATALITIES IN THE MINING SECTOR: 1984 to 2020

Type of Mine	Fatalities /year
Gold	Highest : 702 (1986) Lowest: 18 (2019)
Platinum	Highest : 64 (2004) Lowest: 12 (2018)
Coal	Highest : 121 (1987) Lowest: 4 (2016)
Other	Highest : 132 (1989) Lowest: 6 (2019)
All Mines	Highest : 808 (1986) Lowest: 51 (2019)

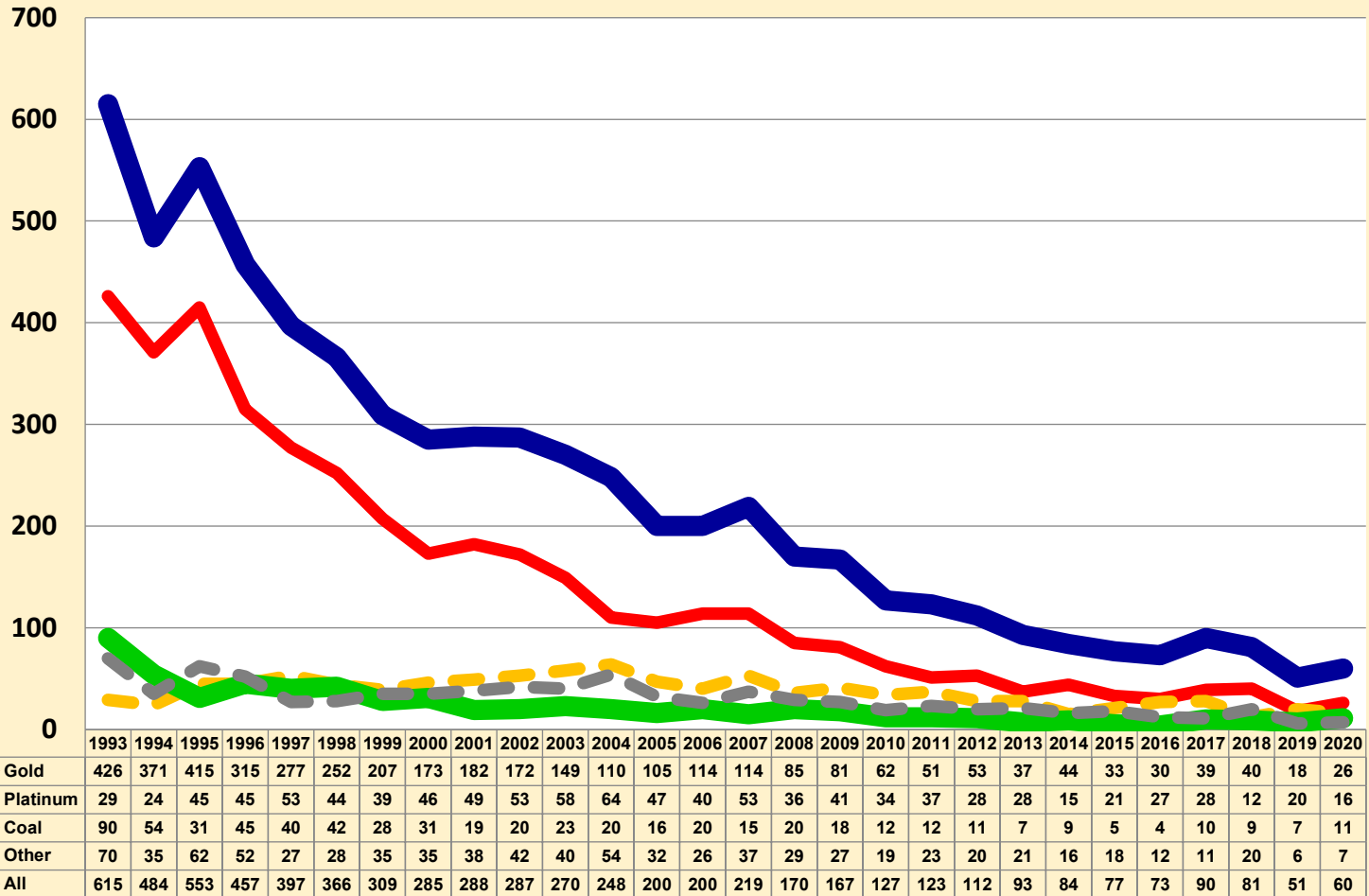


mineral resources
& energy

Department:
Mineral Resources and Energy
REPUBLIC OF SOUTH AFRICA



FATALITIES BY COMMODITY

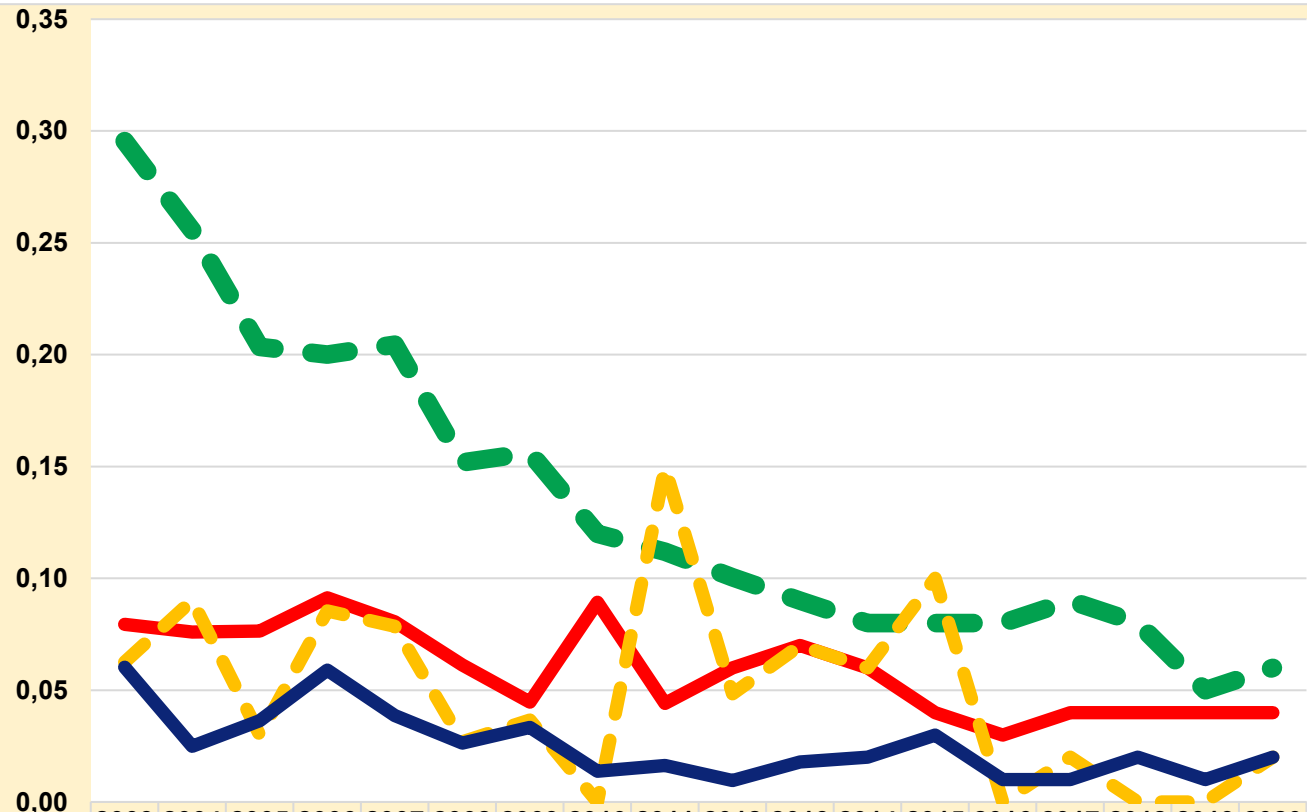






mineral resources
& energy

Department:
Mineral Resources and Energy
REPUBLIC OF SOUTH AFRICA



INTERNATIONAL COMPARISON ON FATALITY RATES



 South Africa	0,30	0,26	0,20	0,20	0,20	0,15	0,16	0,12	0,11	0,10	0,09	0,08	0,08	0,08	0,09	0,08	0,05	0,06
 United States (US)	0,08	0,08	0,08	0,09	0,08	0,06	0,04	0,09	0,04	0,06	0,07	0,06	0,04	0,03	0,04	0,04	0,04	0,04
 Canada (Ontario)	0,06	0,09	0,03	0,09	0,08	0,03	0,04	0,00	0,15	0,05	0,07	0,06	0,10	0,00	0,02	0,00	0,00	0,02
 Australia	0,06	0,02	0,04	0,06	0,04	0,03	0,03	0,01	0,02	0,01	0,02	0,02	0,03	0,01	0,01	0,02	0,01	0,02

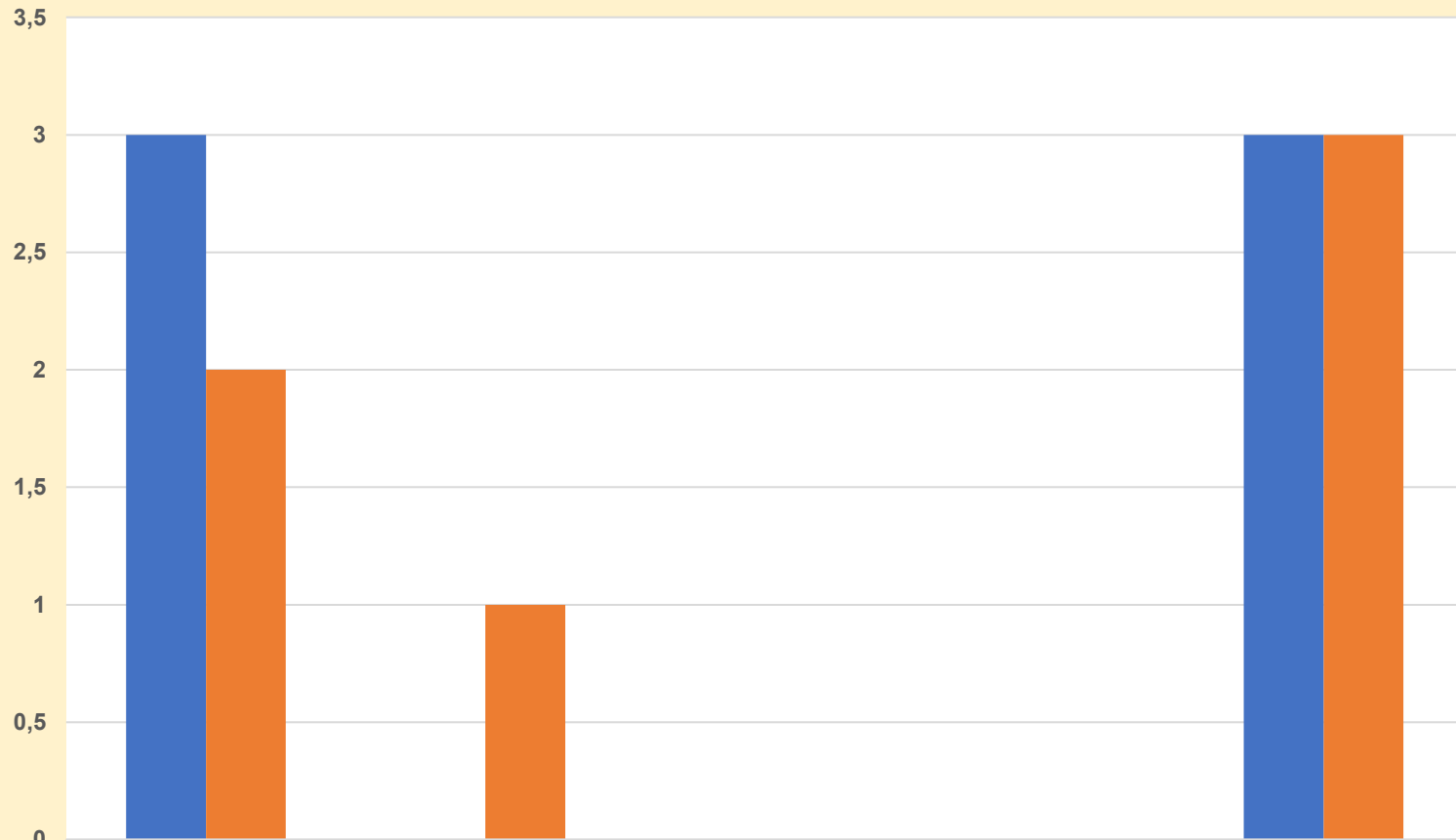


mineral resources
& energy

Department:
Mineral Resources and Energy
REPUBLIC OF SOUTH AFRICA



FATALITIES AND INJURIES BY COMMODITY*



	Gold	Platinum	Coal	Other	Total
■ 2021	3	0	0	0	3
■ 2022	2	1	0	0	3

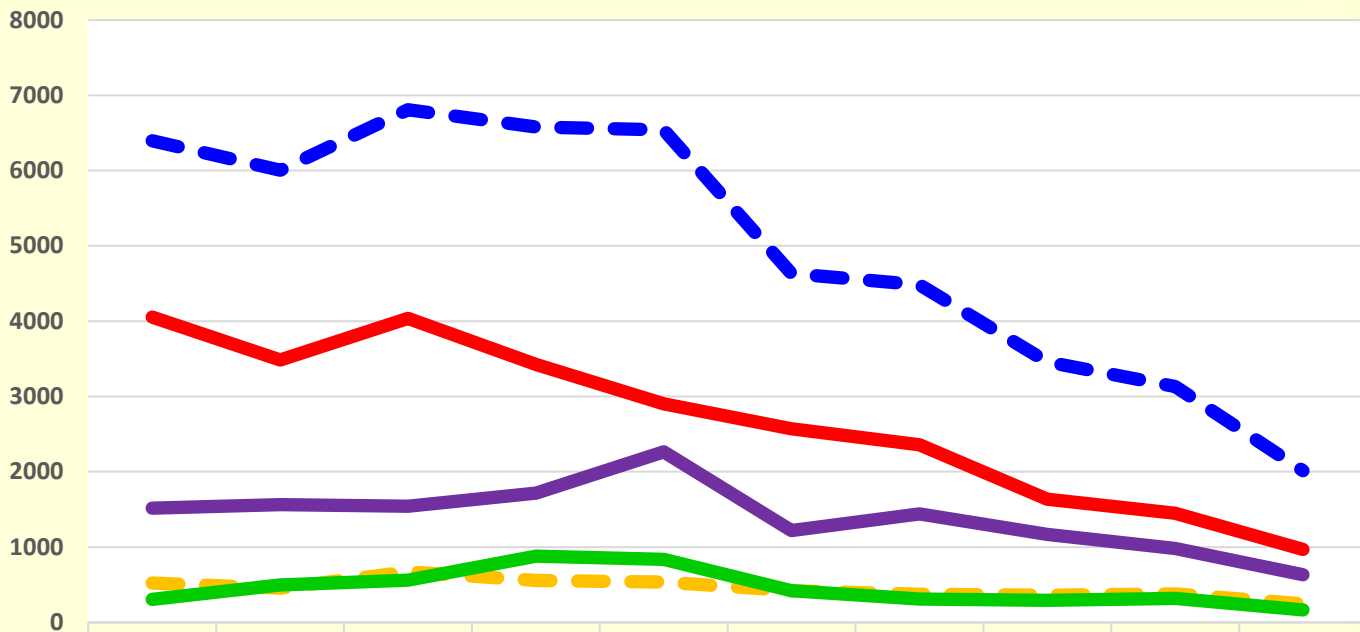


mineral resources
& energy

Department:
Mineral Resources and Energy
REPUBLIC OF SOUTH AFRICA



MAIN OCCUPATIONAL DISEASES REPORTED



	2011	2012	2013	2014	2015	2016	2017	2018	2019	2020
Gold	4052	3486	4035	3425	2903	2572	2360	1637	1449	967
Platinum	1517	1565	1544	1717	2263	1218	1440	1169	983	632
Coal	521	456	671	556	536	420	375	360	379	247
Other	304	496	560	879	838	422	308	292	319	167
All Mines	6394	6003	6810	6577	6540	4632	4483	3458	3130	2013

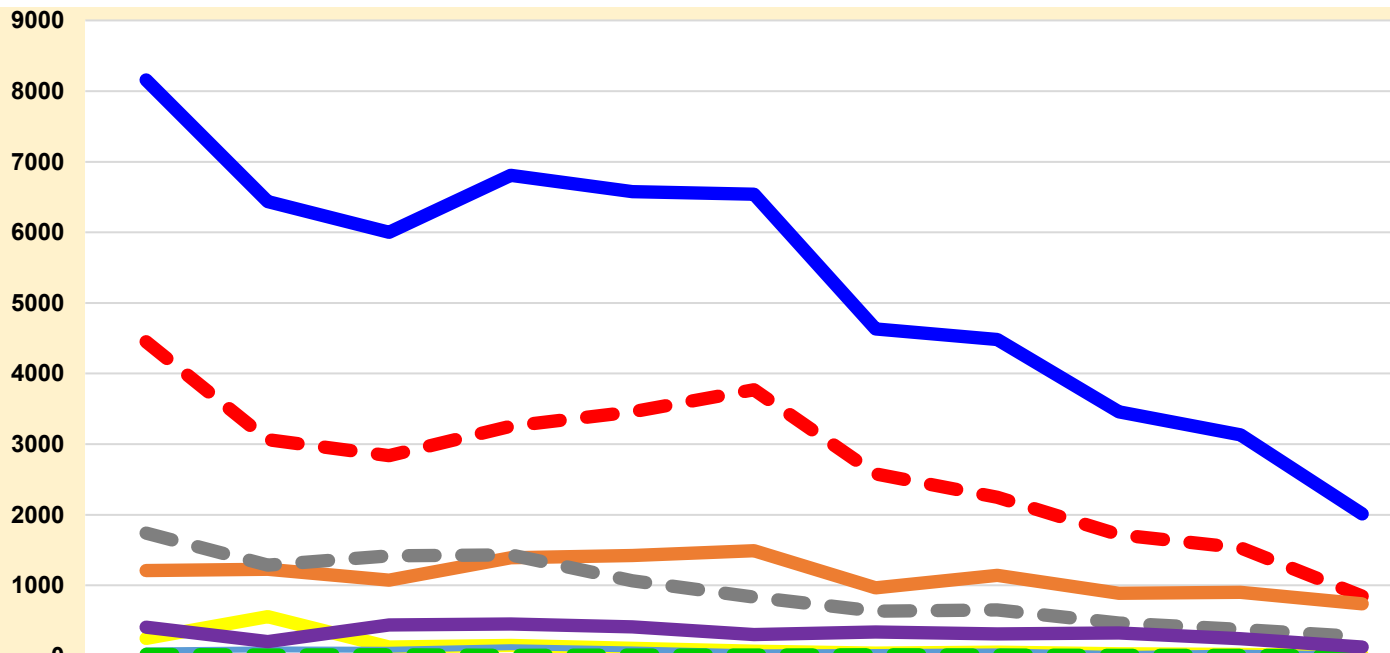


mineral resources
& energy

Department:
Mineral Resources and Energy
REPUBLIC OF SOUTH AFRICA



MAIN OCCUPATIONAL DISEASES REPORTED



	2010	2011	2012	2013	2014	2015	2016	2017	2018	2019	2020
PTB	4452	3062	2838	3255	3460	3773	2580	2247	1716	1533	849
NIHL	1212	1228	1075	1389	1424	1493	966	1141	886	903	738
Silicosis	1742	1286	1420	1430	1063	835	635	652	465	374	271
Sil+TB	249	555	126	149	109	69	38	52	32	22	8
CWP	80	91	86	125	94	53	58	66	27	46	19
Asbestosis	20	11	19	10	15	14	17	12	8	8	2
Other	406	202	438	452	412	303	338	313	324	244	126
All mines	8161	6435	6002	6810	6577	6540	4632	4483	3458	3130	2013



mineral resources
& energy

Department:
Mineral Resources and Energy
REPUBLIC OF SOUTH AFRICA



COVID – 19 CASES AND VACCINATION

Tests	312 904
Cases	53 341
Recovered	60 644
% Recovery	98%
Active Cases	467
Deaths	740
Vaccinated	324 975



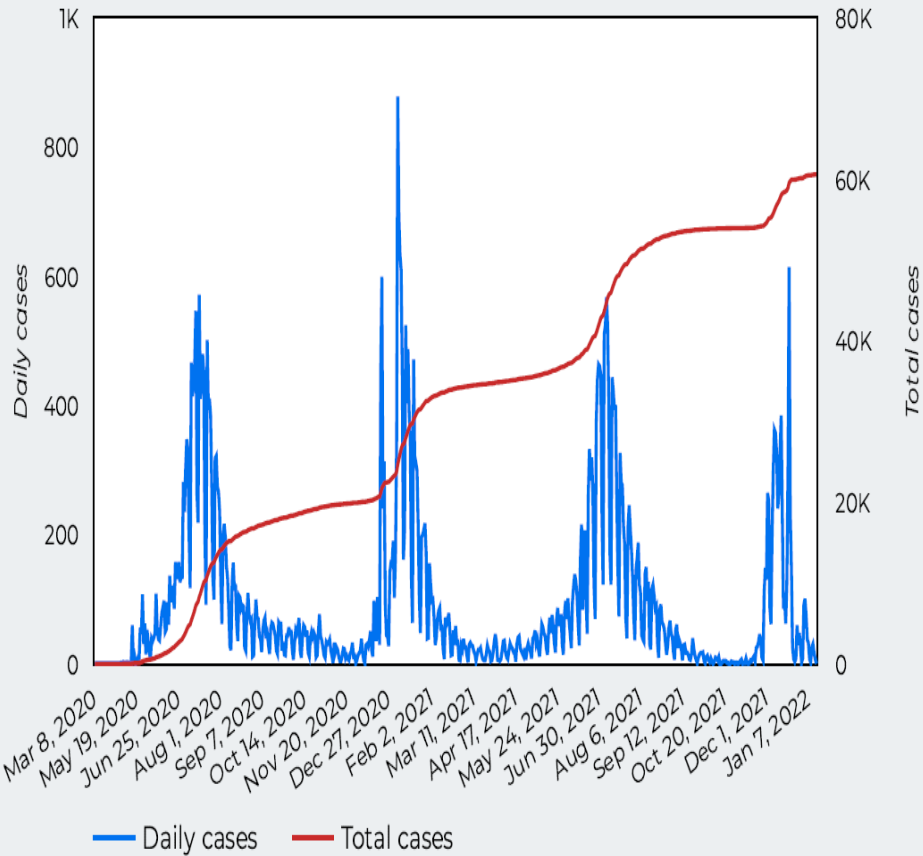
mineral resources
& energy

Department:
Mineral Resources and Energy
REPUBLIC OF SOUTH AFRICA

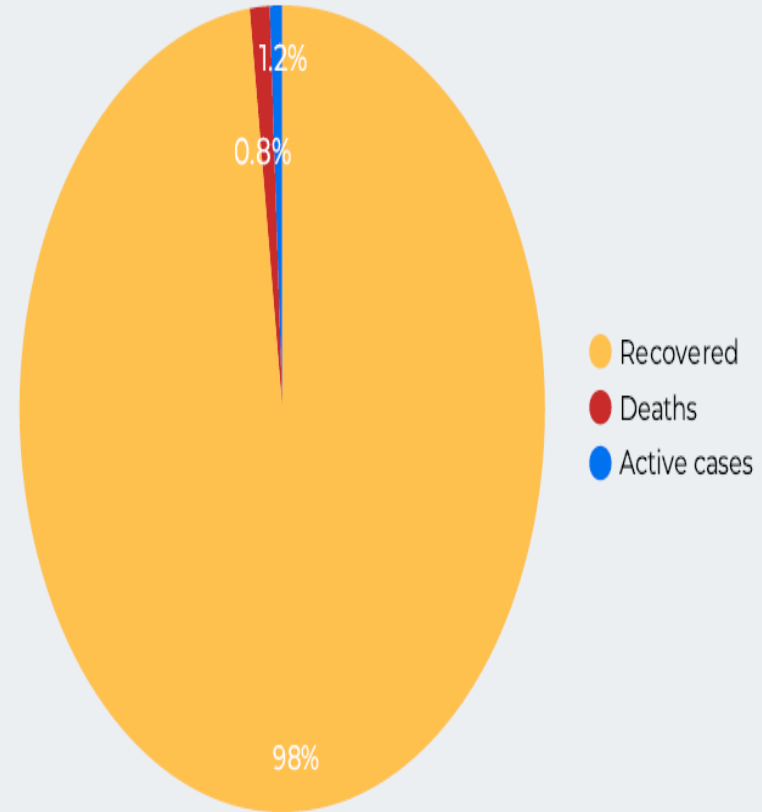


DAILY AND TOTAL COVID-19 CASES

Daily and total cases diagnosed over time



Status of mining cases



mineral resources
& energy

Department:
Mineral Resources and Energy
REPUBLIC OF SOUTH AFRICA



AREAS OF CONCERN

- Persistent loss of life of mineworkers in the mining sector.
- Employers' failure to deliver on their health and safety responsibilities and commitments.
- Culture of non-compliance and shortcuts due to production pressure.
- Diminishing ore reserves leading to re-opening of old areas and mining of remnants.
- Aging mine infrastructure.
- Employees fear to exercise their right to withdraw from dangerous working conditions due to victimization.
- Repeat transgressions and accidents.
- COVID-19 vaccination hesitancy.



mineral resources
& energy

Department:
Mineral Resources and Energy
REPUBLIC OF SOUTH AFRICA



MINE HEALTH AND SAFETY INTERVENTIONS

Collaboration on mine health and safety (MHS) in the sector

- Continuous Engagements with mining CEOs and Organised Labour to ensure that effective measures implemented.
- Strengthen MHS discussions at Regional Tripartite Forums.
- Implementation of the Mine Health and Safety Tripartite Summit Milestones through the MHSC.
- The DMRE recently collaborated with organized labour and employers in holding a Minesafe conference. The Department will monitor the implementation of the commitments and the respective action plan in collaboration the stakeholders.



mineral resources
& energy

Department:
Mineral Resources and Energy
REPUBLIC OF SOUTH AFRICA



MINE HEALTH AND SAFETY INTERVENTIONS

Monitoring and enforcement of compliance

- Conduct inspections and audits.
- Implement enforcement measures where necessary including,
 - Issuing Section 54/55 instructions.
 - Suspension of appointments in terms of the legal provisions.
 - Suspension/withdrawal of certificates of competency.
 - Recommendations for administrative fines and prosecution.
- Strengthen capacity to monitor compliance in the mining sector.



mineral resources
& energy

Department:
Mineral Resources and Energy
REPUBLIC OF SOUTH AFRICA



MINE HEALTH AND SAFETY INTERVENTIONS

Health and Safety of Women in Mining

- The DMRE is collaborating with MHSC in establishing women in mining structures in all Nine (9) provinces of South Africa, which have gone a long way in ensuring that the Mine Health and Safety (MHS) of women is safe guarded.
- The MHSC hosted a Women in Mining Indaba in 2019 and agreed on a 5-year strategic plan with priorities aligned to that of the Department of Mineral Resources and Energy (DMRE) initiatives.
- Women in Mining Advisory Committee (WIMAC) established to implement five (5) priority areas.



mineral resources
& energy

Department:
Mineral Resources and Energy
REPUBLIC OF SOUTH AFRICA



MINE HEALTH AND SAFETY INTERVENTIONS

Skills Development

- The Department is collaborating with the Mining Qualification Authority (MQA) in implementing skills programmes targeting the unemployed youth, women, mineworkers, and people from mining communities and labour sending areas.
- The MQA skills development programmes include the following:
 - Adult Education and Training (AET).
 - Maths and science.
 - Artisan training.
 - Bursaries.
 - Community and ex-mineworkers development programmes.



mineral resources
& energy

Department:
Mineral Resources and Energy
REPUBLIC OF SOUTH AFRICA



CONCLUSION

- Although there has been a historic improvement, the continued loss of life, injuries and diseases in the sector is of great concern.
- In this regard, a step change is required on preventing harm on the mineworkers.
- The DMRE will continue to collaborate with all the tripartite stakeholders in implementing effective measures to ensure that the goal of zero harm is achieved.





THANK YOU.



**mineral resources
& energy**

Department:
Mineral Resources and Energy
REPUBLIC OF SOUTH AFRICA

